

LANDSCAPING SPECIES SUPPLEMENT

Supplementary Planning Guidance Note Ref: SPG 01A - NLLP Policy DSP.4 and NBE.1,2 and 3



Copies available from Planning & Development, Fleming House, Cumbernauld G67 1JW - As approved 22 September 2009

SPECIES SCHEDULE

This schedule is an addendum to SPG.01

Landscaping and SPG.02 Tree Supplementary Planning Guidance produced by the Council. It simply lists potential appropriate species. Any landscape scheme should specify:-

- the density or spacing (no/ metric area)
- species (english/ latin or both)
- size (whip, standard, height and/or spread) &
- location (though use of referenced key) of any new planting.

The latest Supplementary Planning Guidance can be found online at:- www.northlanarkshire.gov.uk/spg



Good landscaping can enhance the environment

Native small trees	Native medium trees	Non-native trees
Blackthorn <i>Prunus spinosa</i> (3-5m) Crab Apple <i>Malus Sylvestris</i> (9m) Elder <i>Sambucus nigra</i> (10m) Native large trees Ash <i>Fraxinus excelsior</i> (40m) English Oak <i>Quercus robur</i> (36m) Oak-sessile <i>Quercus petraea</i> (43m) Wych Elm <i>Ulmus glabra</i> (38m) Native evergreen Holly <i>Ilex aquifolium</i> (20m) Juniper <i>juniperus communis</i> (4m) Scot's Pine <i>Pinus sylvestris</i> (40m) Yew <i>Taxus baccata</i> (28m)	Alder <i>Alnus glutinosa</i> (25m) Aspen <i>Populus tremula</i> (18m) Bird Cherry <i>Prunus padus</i> (15m) Birch silver <i>Betula pendula</i> (18-30m) Downy birch <i>Betula pubescens</i> (23-30m) Field Maple <i>Acer campestre</i> (20-26m) Gean wild cherry <i>Prunus avium</i> (18m) Hawthorn <i>Crataegus monogyna</i> (10m) Hornbeam <i>Carpinus betulus</i> (25-30m) Rowan <i>Sorbus aucuparia</i> (15m)	Beech <i>Fagus sylvatica</i> (40m) European Larch <i>Larix decidua</i> (45m) Hupeh Rowan <i>Sorbus hupehensis</i> (11-15m) Himalayan Cotoneaster <i>Cotoneaster frigidus</i> (15m) Horse Chestnut <i>Aesculus hippocastanum</i> (36m) Japanese Rowan <i>Sorbus commixta</i> (16m) Large Leaved Lime <i>Tilia platyphyllos</i> (40m) Norway Maple <i>Acer platanoides</i> (35m) Red Oak <i>Quercus rubra</i> (35m) Sorbus "Joseph Rock" (12m) Whitebeam <i>Sorbus aria</i> (20m)
<i>typical maximum heights indicated</i>		

Shrubs *very good for providing interest, hedging, softening, and screening*

Large Shrubs	Medium Shrubs	Small Shrubs	Ground Cover
Amelanchier <i>Snowy Mespilus</i> D Aucuba <i>Spotted Laurel</i> E Berberis (Various) D&E Barberry <i>Berberis darwinii</i> Butterfly Bush <i>Buddleia</i> D Cotoneaster (Various) D&E Eleagnus <i>x ebbingei</i> E Firethorn <i>Pyracantha coccinea</i> E Flowering Currant <i>Ribes</i> spp D Hawthorn* <i>Crataegus monogyna</i> D Hazel <i>Corylus avellana</i> (6-8m) Privet <i>Ligustrum</i> spp E Prunus Laurel E Smoke Tree <i>Cotinus</i> spp.D Sumach <i>Rhus</i> varieties D Viburnum spp (Various) D&E	Alder buckthorn <i>Rhamnus frangula</i> D Blackthorn* <i>Prunus spinosa</i> D Broom* <i>Cytisus praecox</i> E Dog Rose* <i>Rosa canina</i> D Escallonia (Various) E Guelder Rose* <i>Viburnum opulus</i> D Hebe <i>Veronica</i> Honeysuckle* <i>Lonicera</i> various Hydrangea (Various) D Hypericum spp <i>St John's Wort</i> E Mahonia <i>aquifolium</i> E Prunus Laurel Rosa <i>rugosa</i> * D Rosa <i>spinosissima</i> * D Spiraea (Various) D Viburnum (Various)	Burnet rose * <i>Rosa</i> Pimpinellifolia E Brachyglottis <i>Dunedin</i> hybrid <i>sunshine</i> E Barberry <i>Berberis darwinii</i> E Dogwood <i>Cornus davidii</i> Hebe <i>Veronica</i> E Lavandula <i>lavender</i> spp Oregon Grape <i>Mahonia aquifolium</i> E Potentilla (Various) D Rosemary, <i>Rosmarinus</i> E Skimmia <i>japonica</i> E	Bergenia spp Cotoneaster <i>horizontalis</i> / <i>Skogsholm</i> E Heather <i>Calluna vulgaris</i> *E Ivy <i>Hedera</i> E Late flowering heather <i>Erica</i> spp Pachysandra spp Periwinkle <i>Vinca</i> major Spanish Gorse <i>Ulex hispania</i> E* Viburnum <i>davidii</i> E

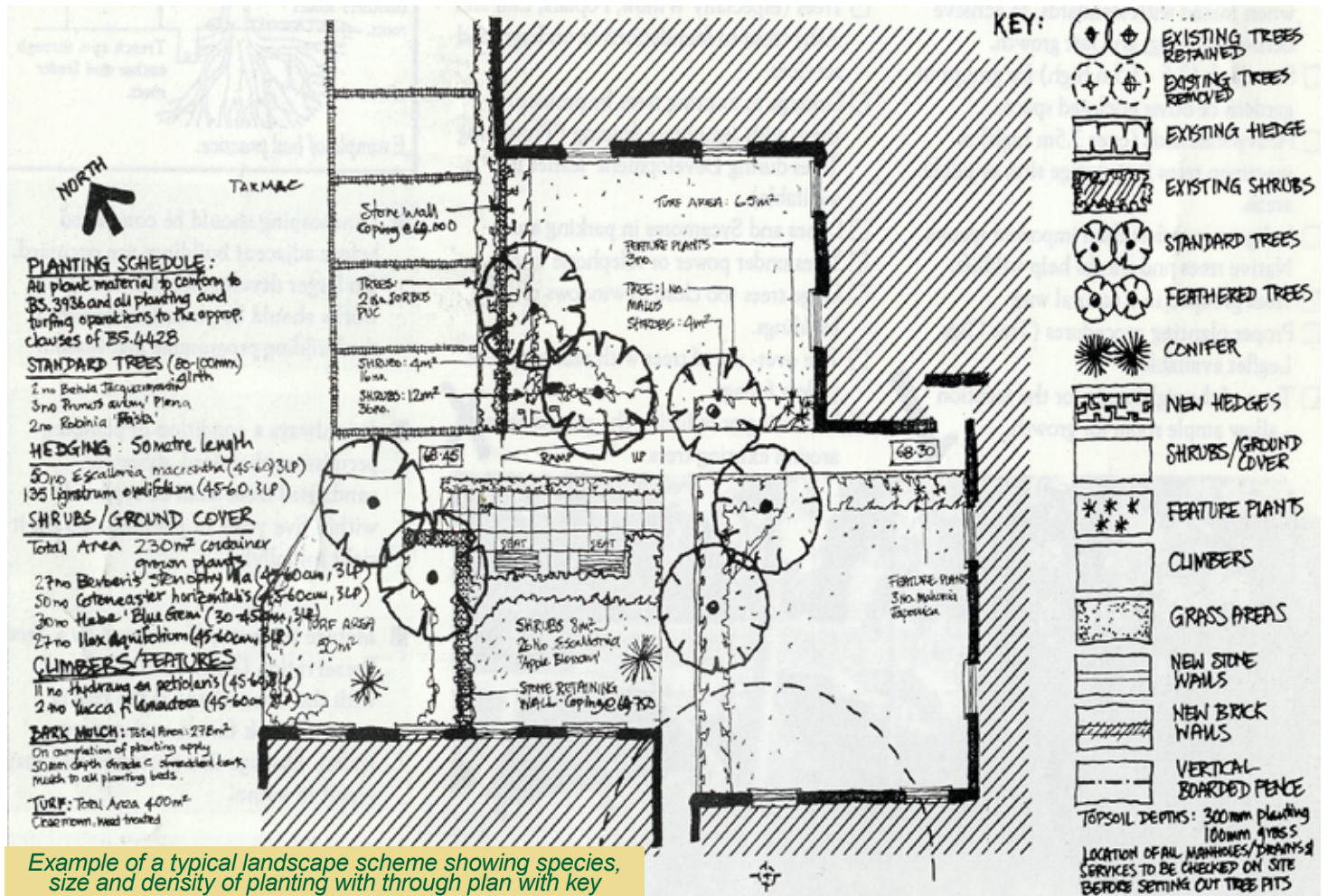
KEY: *use of these native species is recommended
 D=deciduous E=Evergreen

Work on trees & hedges should be avoided from April to September. If work is unavoidable in this period a full survey must be carried out. Refer to Wildlife & Countryside Act 1981 as amended by the Nature Conservation (Scotland) Act 2004.

- In selecting shrubs or trees you need to have regard to:-
- Soil type? Clay or sandy?
 - pH or acidity of the soil?
 - Local climate? Exposure?
 - Location? Sustainability?
 - Naturalised species?
 - Future maintenance?
 - Sunny or shady?
 - Ultimate height?
 - Drainage?
 - Design objectives?
 - Biodiversity?

See Publications at www.snh.org.uk
 Handbooks at handbooks.btcv.org.uk and Guidance at www.forestry.gov.uk/website/fchromepages.nsf/hp/scotland

The council will seek to ensure these principles are achieved through the development management process



Example of a typical landscape scheme showing species, size and density of planting with through plan with key

Checklist

your scheme should include...

The Council will expect Landscape schemes to be submitted with all major applications - providing the information on the right.

On larger sites you may benefit from the advice and expertise of a qualified landscape architect. A list of local practices may be obtained from:

The Landscape Institute,
6/7 Barnard Mews,
Clapham, London SW11 1QU
Tel: 071 738 9166
www.landscapeinstitute.org
www.li-scotland.org.uk

- ☐ A survey of the existing site showing trees, hedges, levels, north, services, etc
- ☐ Proposed location of temporary fencing for existing trees or retained features
- ☐ Details of any necessary surgery to existing trees
- ☐ Information on proposed materials and details of hard landscape (eg heights of walls & fences) – ideally with typical sections and sketch details
- ☐ Information on appropriate new tree and shrub planting – specifying the density, species, size and location of such new planting
- ☐ An explanation in the Design Statement as to how the Landscape scheme seeks to reflect and complement the layout of the development eg highlighting and reinforcing entrances, doors, movement lines, security.
- ☐ Drainage details - including how a SUDS (Sustainable Urban Drainage) approach is to be used.
- ☐ Explain how appropriate privacy/ screening/ enclosure and security are to be achieved.
- ☐ Proposals for maintenance – eg replacing dead plants; mulching; etc (as per box above) – including the explicit factoring arrangements.

The latest Supplementary Planning Guidance and index can be found online at:-
www.northlanarkshire.gov.uk/spg

CONTACT DETAILS

North Lanarkshire Council Development Management

Fleming House, 2 Tryst Road,
Cumbernauld G67 1JW
T: 01236 632518

E: esenquiries@northlan.gov.uk

North Lanarkshire Council Grounds Maintenance

Old Edinburgh Road
Bellshill
T: 01698 506295

North Lanarkshire Council Greenspace Development

Palacerigg House, Palacerigg
Country Parl
T: 01236 780636
E: esenquiries@northlan.gov.uk

North Lanarkshire Council Strategic Planning

Fleming House, 2 Tryst Road,
Cumbernauld G67 1JW
T: 01236 632625
E: esenquiries@northlan.gov.uk

This is one of a series of Supplementary Planning Guidance Leaflets aimed at encouraging good practice in the design and layout of new development. The advice supplements the policies in the North Lanarkshire Local Plan. The Council will have regard to this Guidance when assessing the merits of planning applications. Public consultation on this leaflet took place in December 2008-January 2009. It was formally approved as Supplementary Guidance on 22nd September 2009. It is available on-line can be translated or provided in other languages or formats on request.

Ref: SPG 01A - 22 September 2009 c
Landscaping - Species Supplement
www.northlanarkshire.gov.uk/spg
North Lanarkshire Council, Environmental
Services, Strategic Planning, Fleming House,
2 Tryst Road, Cumbernauld G67 1JW
Tel 01236 632625 esdesign@northlan.gov.uk