

Shotts Community Profile

The Shotts Community board is made up of one ward – Fortissat. There are 4 intermediate datazones covering the area and 20 datazones.

Population

The 2019 population for the Shotts Community Board area was 15,730.

Age group as % of total population			
	Shotts	NLC	Scotland
0-15	17.6%	18.4%	16.9%
16-64	64.5%	64.3%	64.0%
65+	17.9%	17.3%	19.1%

- The structure of the population is slightly younger than the North Lanarkshire population
- 59% of those aged over 65 are females
- 66% of those in the vulnerable over 85 age group are female.

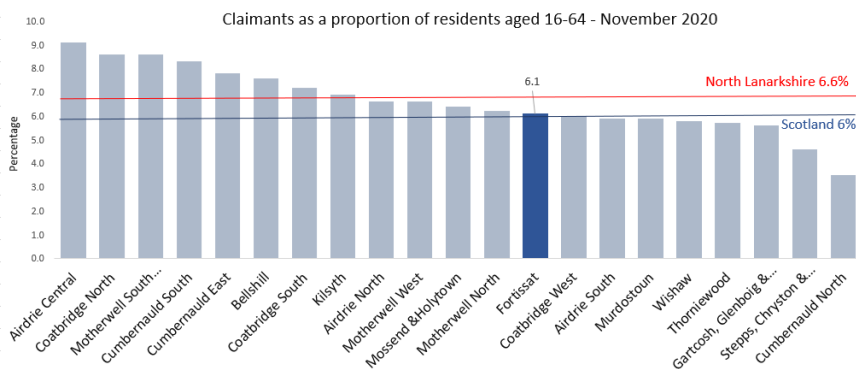
Households and Housing

In 2018, there were 7,126 households in Shotts Community Board area, of which 98% were occupied.

- Around 39% of those occupied households were single adult households, across the council area this is 38%.
- Terraced housing dominates the area, followed by flats.
- 61% of the housing stock is owner occupied
- 7% of properties in Shotts are rented privately, compared to 9% across North Lanarkshire and 14% across Scotland.

Labour Market

The 6.1% claimant rate in Shotts mirrors Scottish rate and is 0.5% points below the North Lanarkshire rate.

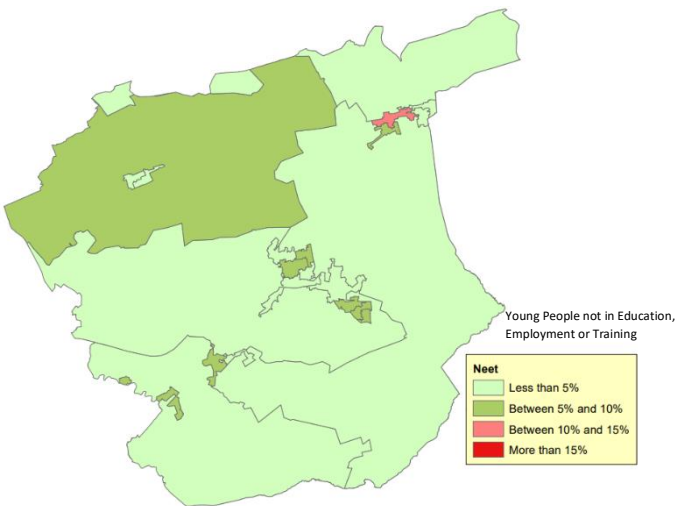
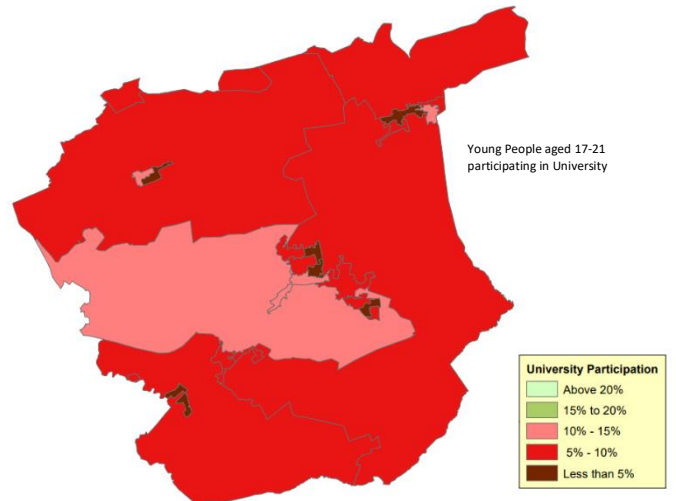
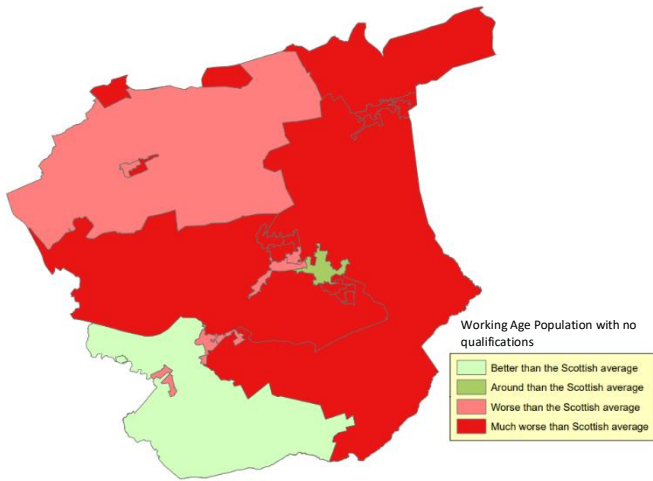


Deprivation

- 11 of the 20 datazones have a higher percentage of income deprivation than the council average of 15% and 13 have a higher percentage than the Scottish average of 12%.
- Around 2,200 people are income deprived, 14% of the board population.

- 1,039 working age people are employment deprived, equating to 10% of that population group.
- 3 of the 7 primary schools have a higher percentage of pupils in years P4-P7 receiving free school meals than the North Lanarkshire (19%) and 4 have a higher percentage than the Scottish average (17%).
- Calderhead High School, the only secondary school in the area is 10% points above the North Lanarkshire average for secondary schools (14%).

The maps below show levels of education deprivation across the board area.



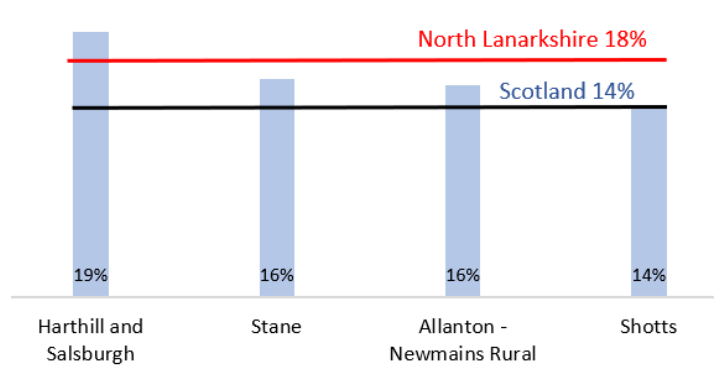
Older People

Attendance Allowance is awarded to people aged 65 and over who need help with personal care and day to day activities. It is a good proxy measure to gauge the health of the older population. All 3 intermediate datazones in the Shotts Community Board area have a higher percentage of the 65+ population receiving attendance allowance than the Scottish average of 14%.

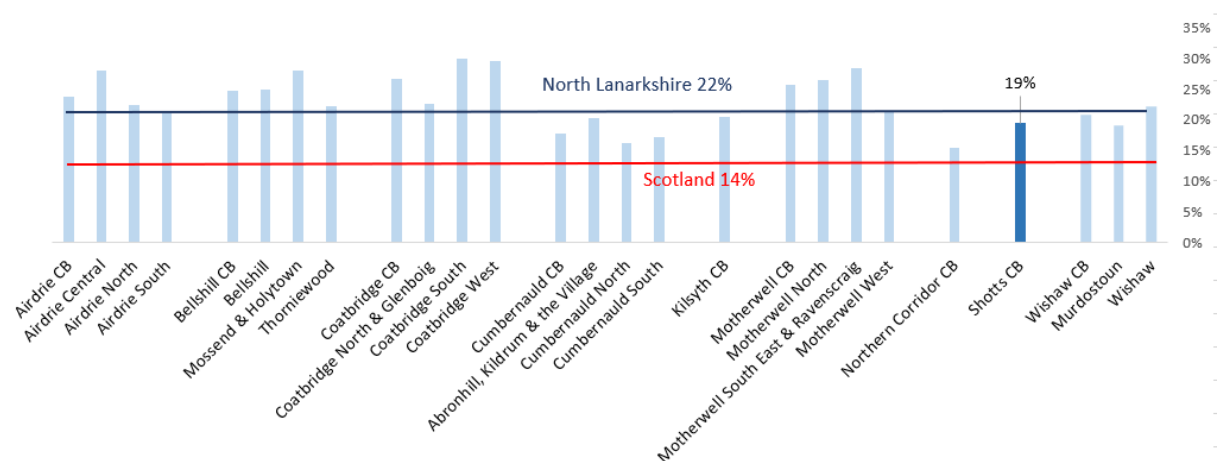
Pension Credit is a good indicator of low-income levels in the older population

Shotts Community Board area (19%) sits below the North Lanarkshire average for those receiving Pension Credit but is higher than the Scottish average of 14%.

Attendance Allowance Recipients (65+ population) 2018



Percentage of the 65+ Population in Receipt of Pension Credit



Culture

In Shotts schools in 2018, 18 languages were spoken in the student body of 2,250 pupils. After English (2,105), the most common languages included:

- Polish
- Punjabi
- Urdu
- Spanish
- Cantonese
- Romanian
- Czech
- Kurdish
- Dutch
- German
- Russian
- Latvian