

IMPROVING COMMUNITY SAFETY IN NORTH LANARKSHIRE

A STRATEGY TO IMPROVE LIVES 2020-2025



contents

| section | page | section | page |
|---|-----------|--|-----------|
| Foreword | 04 | Consultation and Involvement | |
| Introduction | 06 | – What You Told Us | 25 |
| Strategic Context | 07 | Measuring and Reporting Progress | 28 |
| National Context | | Annex – Community Safety Strategy | |
| Local Context | | Indicators and Actions Summary | 29 |
| Community Planning Framework | | | |
| Our Successes | 11 | | |
| Strategic Needs Assessment | 12 | | |
| COVID-19, communities and individuals | 13 | | |
| Key Themes | 14 | | |
| Our Strategic Priorities | 16 | | |

foreword

As the Chair of North Lanarkshire's Community Safety Partnership Forum I am pleased to present North Lanarkshire's new Community Safety Strategy.

This strategy has been co-produced collaboratively involving our communities, Police Scotland, Scottish Fire and Rescue, Health and Social Care, NHS Lanarkshire and a range of Council services, such as Housing, Environmental Services, Road Safety, Education and Justice Services.

It sets out the vision for community safety in North Lanarkshire and the strategic outcomes that the Council and its partners will work towards to help achieve this collective vision.

The strategy is grounded in a successful track record of strong partnership working and forward-thinking approaches to prevention as well as intervention to improve community safety across North Lanarkshire.

Recognising that community safety is fundamentally about improving people's quality of life, and encompasses everything that helps people to be and to feel safe in their homes, within their community and at places of work or leisure, improving community safety is a crucial priority for our communities, the Council, and our partners.

This strategy demonstrates our ongoing commitment to making a real difference to people's lives in North Lanarkshire, through tackling a wide range of issues such as antisocial behaviour, serious crime and disorder, road safety, gender based violence, home safety and fire safety. By addressing these important issues we know that we can help enable communities to be more inclusive, empowered, resilient and safe.



*Councillor Angela Campbell,
Convener of Community Empowerment*

Special Thanks

To all our tenants, residents, communities and partners who have helped produce this strategy. A special thanks to:

Our Community Councils

Scottish Youth Parliament

North Lanarkshire Youth Council

North Lanarkshire Federation of Tenants and Residents Associations

The Local Area Partnerships

North Lanarkshire Housing Co-production Group

The Community Safety Hub, North Lanarkshire Council

Stephen Llewellyn, North Lanarkshire Council

Gillian Whitehead, North Lanarkshire Council

Lorraine Meek, North Lanarkshire Council

Tonia McBurnie, North Lanarkshire Council

Paul Mathieson, Scottish Fire and Rescue

Erica Baillie, Police Scotland

Matt Costello, North Lanarkshire Council

Helen Sneddon, Health and Social Care, North Lanarkshire

Elspeith Russell, Health and Social Care, North Lanarkshire

Clare McElroy, Health and Social Care, North Lanarkshire

Azhar Ali, Road Safety, North Lanarkshire Council



introduction

The definition of community safety has changed over the years and has become increasingly broad and far reaching. Initially focussed on the prevention and reduction of crime and antisocial behaviour, community safety now encompasses all aspects that help people to be and feel safe in their communities, extending to include important issues such as gender based violence, community justice, counter-terrorism, home and fire safety amongst others. Generally it is now recognised that community safety is set within a much broader holistic context of enabling communities to be resilient and safe, through effective engagement and empowerment, and that much wider social, economic and physical factors all impact on community safety.

In North Lanarkshire we have a collective ambition which is shared with partners to reduce inequalities, increase prosperity, inclusiveness and outcomes for all, as set out in ***The Plan for North Lanarkshire***. Our vision for community safety is aligned with our overarching ambition and is to:

‘Make North Lanarkshire a better place to live, work and visit through integrated partnership working to build strong, inclusive, vibrant, engaged communities, where homes,

workplaces, and public spaces are safe and feel safe for everyone to prosper’.

Building on the existing strong partnership arrangements we will endorse a holistic, integrated approach across partners to address the needs of communities in North Lanarkshire, recognising the broad spectrum of activity that contributes to community safety and seek to extend our influence further to support communities to be empowered to realise solutions that work best for the people who

live, work and visit North Lanarkshire.

This **Community Safety Strategy** also comprises our Antisocial Behaviour Strategy for North Lanarkshire as required by the Antisocial Behaviour etc. (Scotland) Act 2004 due to the inter-connectedness of tackling antisocial behaviour with the other community safety strands and benefits of considering all of these strands in a holistic way to better utilise and target resources and activity as a partnership.

strategic context

National Context

The Scottish Government's ambition for a 'Safer and Stronger Scotland' where local communities flourish and become stronger, safer places to live, offering improved opportunities and a better quality of life provides the national context for all community safety activity. The National Policy Framework has provided the mechanism for monitoring progress, with community safety aligned in some way to all the outcomes, but with particular connection to:

National Outcome 9: We live our lives safe from crime, disorder and danger

National Outcome 10: We live in well-designed, sustainable places where we are able to access the amenities and services we need

National Outcome 11: We have strong, resilient and supportive communities where people take responsibility for their own actions and how they affect others

Other national strategies and programmes of relevance include Justice in Scotland: Vision and Priorities, published in 2017 and the Scottish Government's Building Safer Communities (BSC) Partnership Programme. The Justice in Scotland Strategy places people at the centre with a stronger focus on prevention, early intervention and diversion, a notable shift away from a focus on systems in place, recognising that the Justice Service cannot in isolation address the criminal and social issues in Scotland. The BSC programme seeks:

'a flourishing, optimistic Scotland in which resilient communities, families and individuals live their lives safe from crime, disorder and harm'.

This collaborative approach helps communities and partners reduce crime and unintentional harm, making best use of the strengths within communities to drive transformational change through improvement and good practice.



Local Context

The Plan for North Lanarkshire is the overarching strategic plan for North Lanarkshire. It sets out the direction for all partners, the council, stakeholders and, most importantly, for each of our unique communities and the people who live, learn, work, invest and visit within North Lanarkshire. This provides the framework for all other strategies and plans, including the Community Safety Strategy. The plan identifies that whilst trends show strong improvements in a number of key areas, such as employment, investment and educational attainment, there are still unacceptably high levels of deprivation, child poverty and clear areas of inequity and inequality remaining. As such, it is recognised that there is an element of social exclusion across some of our towns and communities in North Lanarkshire and *The Plan* seeks to reduce this exclusion through improving prosperity and outcomes for all, ensuring that all our communities benefit, improving equality of opportunities for all. Community safety is pivotal to achieving this vision and contributes to all five high level strategic priorities set out in *The Plan* given the broad context in which community safety exists, making a particular specific contribution to outcomes 3 and 4:

Outcome 3: Improve the health and wellbeing of our communities

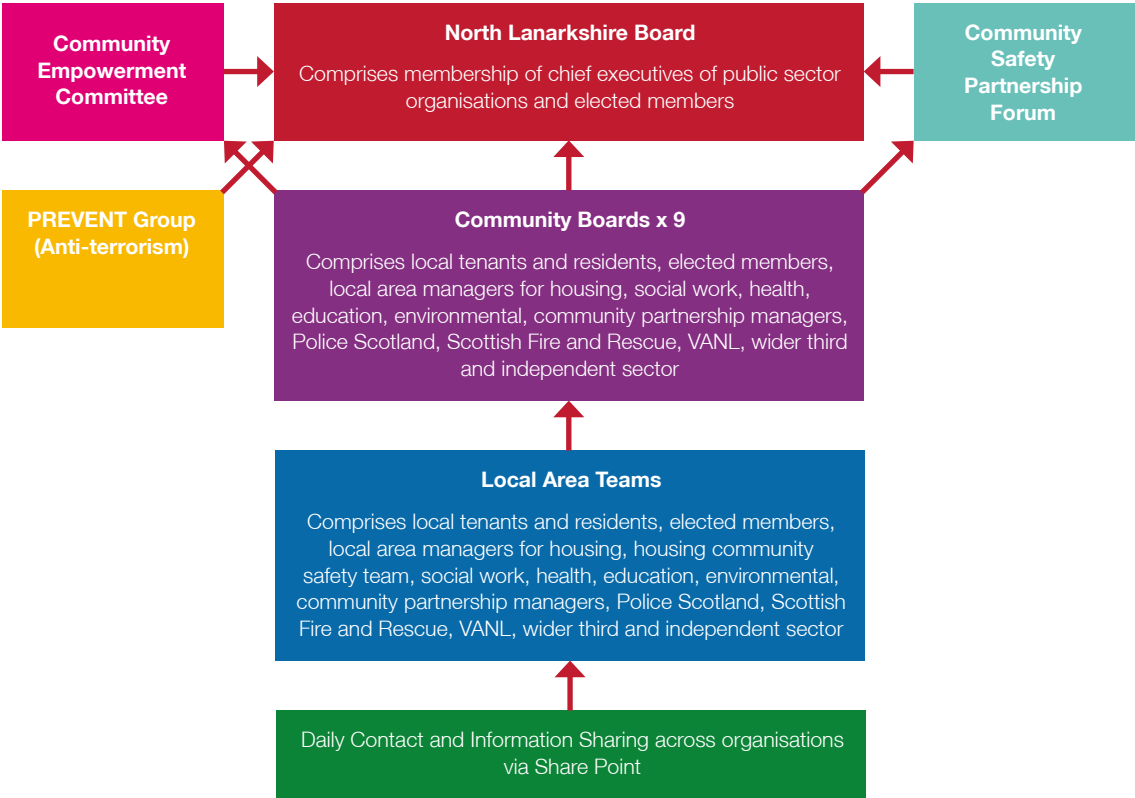
Outcome 4: Enhance participation, capacity and empowerment across our communities

There are also a number of other local strategies and plans that community safety plays a key role in, including the ***Equalities Strategy (2019-24), the Local Housing Strategy (2016-21), the Tenant Participation Strategy (2020-25) and Community Matters – A Framework for Working with Communities*** amongst others. This reinforces the far-reaching impact of community safety and its inter-connectedness across different policy areas.



Within North Lanarkshire the vast majority of community safety work is coordinated at a local level through the community safety sub groups with North Lanarkshire Board taking a governance and strategic role. All partners with a role in community safety are represented on these community planning structures and include, Elected Members, Housing, Police Scotland, Scottish Fire and Rescue, Health and Social Care, NHS Lanarkshire, Education, Environmental Services, the Housing Community Safety Team, VANL and other council services. Involvement from communities is vital in these structures and representation from community members is comprised in the Community Boards and other sub groups which feed into the community safety agenda. The following diagram provides an illustration of the community safety planning arrangements.

North Lanarkshire Community Safety Planning Arrangements



There are 3 Community Partnership Managers, 6 Assistant Community Partnership Managers and a Housing Community Safety Team within North Lanarkshire Council who have specific responsibility for driving forward community safety in North Lanarkshire in partnership with communities, Police Scotland, Scottish Fire and Rescue, Registered Social Landlords, the Procurator Fiscal, Children's Reporter, NHS Lanarkshire and Health and Social Care North Lanarkshire, the Third and Independent Sector, local businesses and other council services. The Housing-Community Safety Team has a specific remit for tackling antisocial behaviour and has responsibility for delivering on the Antisocial Behaviour etc. (Scotland) Act 2004 requirements.

All community safety related policy, plans, strategies and performance related business are reported to the Community Empowerment Committee and the Community Safety Partnership Forum.

The community safety sub groups and community planning partnership structures work closely with Public Protection Services¹ and Justice Services, as well as a number of other partnership boards and forums, including:

- North Lanarkshire's Alcohol and Drug Partnership
- North Lanarkshire's Violence Against Women Working Group
- North Lanarkshire's Local Housing Strategy Steering Group
- North Lanarkshire's Equalities Group
- North Lanarkshire's Mental Health and Addictions Partnership Board
- North Lanarkshire's Long Term Conditions and Frailty Partnership Board
- North Lanarkshire's Integrated Joint Board

Strong partnership arrangements have been in place in North Lanarkshire for a number of years, providing a vehicle for partners to collectively meet the needs of local people especially for those people in most need. These robust partnership arrangements will provide the foundations to build stronger links across partners and areas to improve how we work together to improve community safety in North Lanarkshire.



¹ Separate governance arrangements exist for Adult and Child Protection and Management of Offenders

our successes

There have been a number of successes in recent years which have resulted in a number of positive outcomes in relation to community safety. This is evidenced in a downward trend in a number of key community safety areas, including, overall levels of crime, deliberate fire setting, road casualties and driving offences.

Key to this success has been our partnership response involving our communities, individuals and partner organisations which has evolved over time to provide an effective response to changing local needs. A key example of this coordinated partnership response to improve community safety has been the recent establishment of a new all-encompassing Housing Community Safety Team which incorporates both the Antisocial Behaviour Response Service and the CCTV Monitoring Centre providing a rapid, effective and coordinated response to tackling crime, disorder and antisocial behaviour in North Lanarkshire.

The innovative redesign of the new team houses one of the most advanced CCTV control systems in Scotland, monitoring over 1,000 cameras across schools and colleges; town centres; multi-storey tower blocks; housing areas; recycling and waste

centres. The team works in close partnership with Police Scotland, providing real-time intelligence that informs a rapid response helping keep our officers safe whilst carrying out their duties. Evidence gathered from CCTV provides vital evidence to secure convictions and is a crucial policing tool in issuing fixed penalties for environmental littering. Furthermore, the team provide 'Shop Watch' a vital service to help prevent theft in shops and can redeploy cameras to areas of concern to help prevent and tackle crime.

All of this makes a huge contribution to helping people feel and be safe in our communities, but the service also makes a vital contribution in other less well known but critical areas. Two such key areas in which the team have a life-saving impact include suicide prevention and finding missing people. With strategic public space CCTV coverage the team are skilled and fully equipped to utilise the technology to identify people in distress and can act quickly in partnership with other key responders to provide the support and help required.

Going forward the other key component of the team includes the Antisocial Behaviour Service which provides a range of proactive and preventative

focussed responses and measures to address antisocial behaviour. This service has consistently seen year on year improvements in key performance areas and has worked in close partnership with the CCTV monitoring centre to achieve positive outcomes in relation to community safety. The new alignment of these two key services in one team recognises the benefits of the convergence of such services in providing a more effective response to community safety in North Lanarkshire.

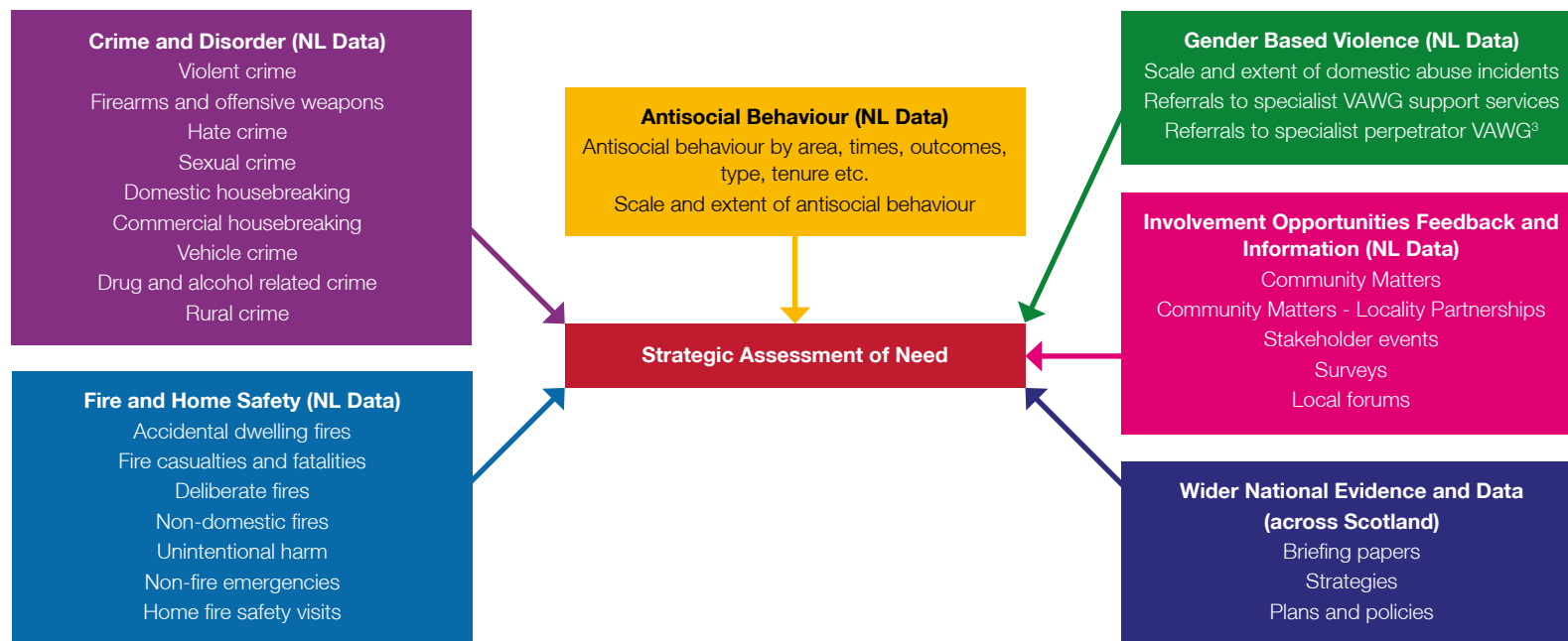


strategic needs assessment

A strategic needs assessment has been undertaken to identify the key community safety issues in North Lanarkshire. This assessment has involved analysis of a detailed evidence base across a broad range of

areas, and includes information and feedback from consultation and involvement opportunities. The diagram below provides an overview of the evidence and data explored throughout this process.²

Strategic Needs Assessment of Key Community Safety Issues in North Lanarkshire



² Note this provides a summary overview of data and evidence explored, a much broader range of evidence and data is collated and analysed in relation to the respective areas and the context of community safety

³ VAWG - Violence Against Women Group

COVID-19, communities and individuals

The timing of the research and evidence that underpins this strategy pre-dates the COVID-19 pandemic. Since undertaking the research to inform this strategy, the global pandemic has caused disruption to everyday life and the impact of the virus on individuals and communities has been extensive and significant. The medium to longer term impacts of the pandemic on individuals and communities is not yet known.

We know however from the early data and evidence available that the pandemic has had a profound immediate impact on a range of key areas that affect individuals' lives and communities. For many, they have been affected on a personal level, through loved ones, family members, friends or themselves being affected directly by the virus. For others their livelihoods have been affected, through furlough or redundancy, and for many day to day life has changed significantly with the implementation of lockdown measures and social distancing. The response to COVID-19 however, has demonstrated the substantial

contribution that individuals and communities make to public health, community safety and building resilience. Since the outbreak of COVID-19, communities have sprung into action, with neighbours and community groups organising support to help those in need in their local areas. Many people have stepped forward to volunteer, helping in the community hubs, local charities, or in the NHS. Communities have shown their resilience and adaptability to respond to local needs. Nonetheless, COVID-19 has also highlighted the significant inequalities that exist in our communities with evidence showing that the pandemic has had a greater adverse impact on individuals in our communities who are already disadvantaged or experience inequality. As such greater support is needed for individuals and communities who are excluded, isolated or seldom heard. In a similar way the pandemic has illustrated the value and positive impact that high quality outdoor space, which is safe and welcoming has on both physical and mental health. We know that access to

green space varies significantly across different social groups and that good access can reduce the impact of deprivation through improving health and wellbeing and creating stronger communities. This strategy therefore plays an even more important role going forward, providing community-centred mechanisms in which communities can become more empowered, building on their resilience to create and shape safer stronger communities in which individuals and communities are better connected, inequalities are reduced and everyone has the opportunity to thrive and prosper. The review of this strategy will consider any new evidence that emerges in relation to COVID-19 and communities. Actions will be reviewed and updated where required to reflect an appropriate response to emerging needs.

key themes

The wide range of evidence has informed the key strategic priorities that will help achieve our vision to ‘**Make North Lanarkshire a better place to live, work and visit through integrated partnership working to build strong, vibrant, engaged communities, where homes, workplaces, and public spaces are safe and feel safe for everyone to prosper**’.

Recognising that safe communities that are resilient, inclusive and tolerant are conducive to creating communities in which individuals can thrive and prosper, how we deliver community safety will require a collective effort from communities and all partners.

Underpinning our priorities are key themes which set out the fundamental aspects of our approach in taking forward the creation of safer communities in North Lanarkshire:

Effective Community Involvement, Influence and Ownership

We will support and enable communities to identify and tackle issues that are most important to them. We recognise the involvement and participation from communities and individuals within communities is pivotal to creating safer communities. We also recognise that it may be challenging for some individuals and communities to have their voice heard,

and that some people may face particular barriers to engagement. We will endeavour to ensure a range of engagement methods that optimise involvement from all, with a particular focus on creating conditions in which communities that experience exclusion are supported to be involved and have real control and influence over decisions that are made.

Strong Partnership Working, Governance and Decision Making

We recognise that community safety is complex and multi-faceted and that in order to create safer communities we need to address the needs of people and communities holistically. Evidence tells us that interventions in one area can result in improvements in other outcomes, reinforcing the need for effective integrated and partnership working across a broad range of areas.

Tackling Inequalities

Evidence tells us that despite improvements in a number of important areas persistent inequalities still exist in our communities. Furthermore, national evidence suggests that the inequality gap is widening with factors such as poverty, welfare reforms, connectivity, health and age all playing a role. We are committed to tackling inequalities and improving outcomes for all, as such we will target our efforts and resources on communities in greatest need. We will do this through improved collaborative working recognising that communities and individuals in greatest need are often in contact with a range of services for different reasons and effective support is support which addresses needs in a holistic way, taking a whole systems approach across services.

Prevention and Early Intervention

We know that prevention and early intervention is best if we are to support people to change their behaviours, reduce risk and achieve sustainable long term changes in communities and amongst individuals and families. We will focus on taking action at an early stage working closely with partners to help build capacity and resilience in communities and amongst individuals to create healthier and safer communities.

Place Based Approach

We will adopt a 'Place Principle' approach to our activity, to strengthen cross-sector collaboration with communities and partners and to optimise outcomes recognising the value of a place based approach in aiding a better shared understanding across sectors of issues, and increasing capacity and flexibility to respond to these issues.



our strategic priorities

Priority 1: To effectively tackle antisocial behaviour

Evidence tells us:

- Antisocial behaviour (ASB) contacts are increasing, up 11.2% in 2018/19 from the previous year and 18.4% since 2014/15
- 69% of ASB contacts relate to domestic noise, accounting for the majority of ASB call outs, followed by criminal activity which accounted for 15.8% of contacts
- The top three categories of domestic noise complaints are loud music, banging and shouting and swearing, in this order, with loud music accounting for 34.07% of all domestic noise complaints in 2018/9
- The top three categories of criminal activity complaints are misuse of drugs, violence and vandalism, in this order, with misuse of drugs accounting for 27.4% of all criminal activity complaints in 2018/19

- 16% of ASB contacts relate to criminal activity, 7% harassment, 5% estate issues, 2% gangs/youths and 1% non-domestic noise
- 57.4% of ASB contacts are made from tenants who live in council housing, 22.5% are from owner occupiers, 7.1% are from private sector tenants and 2.7% are from housing association tenants
- The remaining 13.0% of ASB contacts comprise individuals who wished to remain anonymous and individuals who have been referred to the service from other partner agencies
- In relation to ASB subjects³, the majority are tenants who live in council housing, accounting for 60.4% of subjects
- 12.9% of ASB subjects are from the owner-occupier sector, 10.2% are private sector landlord tenants, 4.0% are from people in temporary accommodation and 3.0% are from tenants in housing association properties
- 7.2% of ASB subjects were area related and not tenure specific
- 10.7% of contacts were from tenants in multi-storey towers
- In 2018/19 the majority of contacts received were in relation to a repeat subject, with 57% of contacts over the year relating to a subject who had been reported on at least one other occasion
- 60% of contacts in 2018/19 were made out of hours
- The majority of contacts made in 2018/19 were during summer months (July and August)
- Motherwell and Wishaw had the greatest proportion of contacts of all locality areas in 2018/19 accounting for 20.4% and 19.6% of all contacts
- Bellshill had the lowest proportion of contacts, accounting for 13.2% of all contacts made in 2018/19
- Of all contacts made, 17% required a call out with a greater prevalence of call outs in out of hours than during daytime hours (25% in comparison to 5%)

³ ASB subjects relate to the person who is subject of the ASB complaint

Our key actions:

- We will better use evidence and intelligence collaboratively to identify key areas of focus to target resources and activity to effectively tackle antisocial behaviour
- We will review the Antisocial Response Service to ensure the service is fit for purpose, targets resources efficiently and effectively and meets local needs
- We will adopt a preventative approach by delivering local based initiatives to address and prevent antisocial behaviour
- We will work collaboratively to implement environmental changes to minimise antisocial behaviour in public spaces
- We will work in partnership to proactively address challenges around problematic premises
- We will decrease the sale of alcohol to young people, focussing on the providers and facilitators of alcohol provision
- We will increase the effective use of existing legislation e.g. CRASBO, Fixed Penalty Notices for Environmental Offences, Antisocial Behaviour Orders



Priority 2: To reduce serious violence and disorder

Evidence tells us:

- Overall, crime across North Lanarkshire has decreased by 15% across the past 5 year period⁵
- Housebreaking has reduced by 5.2% over the 2017/18 and 2018/19 period and has reduced by 17.1% over the past 5 year period
- Sexual crime has reduced by 19.9% over the 2017/18 and 2018/19 period and sexual crime detection rate has increased by 19.8%
- Whilst serious assaults have reduced by 13.9% over the 2017/18 and 2018/19 period they remain 7.9% above the five year average

- There has been an increase of 4.8% in common assaults recorded over the 2017/18 and 2018/19 period
- Within this 4.8% increase, there has been a 20.2% increase in police assaults
- Robbery detection rate has improved by 7.4% over the 2017/18 and 2018/19 period and robbery has reduced by 2.7%
- Hate crime and offences detection rate has increased by 5.3% over the 2017/18 and 2018/19 period
- The number of complaints regarding disorder has reduced by 4.9% over the 2017/18 and 2018/19 period
- The number of detections for drug supply, drugs productions and cultivation has decreased by 16.1% over the 2017/18 and 2018/19 period



⁵ 2014/15; 2015/16; 2016/17; 2017/18 and 2018/19 period

Our keys actions:

- We will increase positive engagement with complainers of violence to maximise accurate reporting and investigating
- We will reduce residential indoor violence by targeting repeat locations and offenders
- We will reduce the number of people carrying weapons and serious violent crimes involving the use of weapons through a range of tactics including prevention, early intervention and enforcement
- We will increase the disruption of persons involved in serious and organised crime and reduce the number of violent crimes linked to feuds between crime groups
- We will reduce hate crime through effective engagement, education and enforcement
- We will ensure effective use of third party reporting tools for hate crime
- We will commit specialist officers to investigate patterns of housebreaking and target recidivist offenders
- We will increase the use of mobile automatic number plate recognition to reduce road crime
- We will encourage prevention activity such as removal of property tools from vehicle and trailers to reduce vehicle crime
- We will tackle serious organised crime groups who exploit young people to commit high value vehicle crime
- We will collaboratively support education in relation to the risks of drug use, including multi-substance use
- We will increase intelligence and detection in relation to the supply of all drugs



Priority 3: To reduce harm from unintentional injury and fire

Evidence tells us⁷:

- There has been a slight increase in the number of accidental dwelling fires, up 5% over the past 3 years
- A total of 3,260 Home Fire Safety Visits have been carried out in 2018/19 in North Lanarkshire
- The majority of the accidental dwelling fires occur in the Motherwell and Ravenscraig areas
- There has been an increase of 23% in fire casualties
- Fire fatalities remain low, with no reduction or increase in the past 3 years
- The majority of injuries from accidental dwelling fires are minor with the most people receiving first aid on site and for those who do attend hospital the majority of their injuries are considered 'slight'
- The highest number of casualties are in the 30-39 years age group followed by 50-59 years age group

- Cooking food remains the main cause of accidental dwelling fires in North Lanarkshire
- For all deliberate fires (primary and secondary) there is an overall decrease of 9%
- There has been an increase of 9% in fires in non-domestic property
- Smoking is the main cause of death from fire in the home
- Those who drink alcohol and smoke are more likely to lose to their life in a fire
- Those from the most deprived areas are much more likely compared to those from the least deprived areas to experience an unintentional injury
- The rate of falls in those aged 65 and over is increasing
- Deaths from poisoning has increased nationally, doubling since 2011, this is in line with the National Records of Scotland statistics showing recent increases in drug related deaths
- The number of emergency admissions in North Lanarkshire due to unintentional injury has increased over the past 3 years by 5.6%⁸
- Falls account for the largest proportion of unintentional injury emergency hospital admissions

in North Lanarkshire, accounting for 61.7% of all injuries

- Unintentional injury emergency hospital admissions is most common in North Lanarkshire amongst the 75+ age group, which accounts for 27.9% of injuries
- Deaths by unintentional injury in North Lanarkshire have increased by 9.6% over the past 3 years⁹
- Suicide rates in North Lanarkshire have increased in recent years and are above the national rate
- Young people aged 14 years to 25 years and men aged 34 years to 54 years are particular high risk groups in respect of suicide, with the latter 3 times more likely to commit suicide than any other population group
- Most suicides in North Lanarkshire are outwith deprived areas, which is in contrast to the rest of Scotland

⁷ All evidence based on comparison of 2018/19 data to the 3 year average data over the period 2016/17; 2017/18 and 2018/19.

⁸ This includes road traffic accidents, poisoning, falls, struck by/against, crushing, scalds, accidental exposure to other and unspecified causes and other, data refers to the 3 year period 2015/16; 2016/17 and 2017/18 from ISD Scotland

⁹ Refers to the period 2017/18, 2016/17 and 2015/16 – most recent data available at time of writing from ISD

Our keys actions:

- We will provide **Cook Safe** presentations and **Home Fire Safety Visits** to address the main causality factor of accidental dwelling fires and to reduce resulting casualties and fatalities
- We will tackle antisocial fire related behaviour through effective use of intelligence and working collaboratively across organisations and partners
- We will continue to deliver our **Fire Reach Programme** to support our personnel to engage effectively with young adolescents
- We will continue to roll out the new **Junior Fire Reach Programme** for S1 pupils across all secondary schools in North Lanarkshire
- We will support the **Juvenile Firesetter Intervention Programme** through the specialised work of the Community Action Team
- We will continue to implement the range of fire stopping and active and passive fire safety measures in NLC multi-storey tower blocks
- We will increase the number and variety of emergencies attended by Scottish Fire and Rescue Service to support partner agencies in protecting the community
- We will work with housing organisations that provide specialist housing to improve fire safety for vulnerable groups using the new national fire safety guidance for specialist housing
- We will work with partner organisations to reduce the number of unwanted fire alarm signals
- We will implement a **Falls Strategy** to reduce the number of slips and trips in the home
- We will increase participation in physical activity opportunities recommended to improve bone health and strength, and raise awareness of active health opportunities such as 'get walking' North Lanarkshire to improve health and reduce risk of falls
- We will continue to improve home safety for young children through working with our early year providers to raise awareness of home safety with parents
- We will work with the Alcohol and Drug Partnership to promote harm reduction and reduce drug related deaths in our communities
- We will explore creating a drug related litter group to effectively address and reduce the amount of needles and other drug related litter inappropriately disposed of
- We will proactively target groups at most risk of suicide through effective social media campaigning
- We will continue to implement the actions contained in Lanarkshire's **Tobacco Control Strategy** to reduce the prevalence of smoking in North Lanarkshire and in doing so reduce the risk of unintentional fire and injury
- We will improve awareness of suicide amongst our education establishments and consider further how to sensitively increase awareness amongst primary education settings
- We will continue to carry out a range of tailored training on suicide prevention including **Suicide Talk, Safe Talk, ASIST and Storm Training**.

Priority 4: To tackle Gender Based Violence and protect people at risk of harm

Evidence tells us:

- The number of domestic abuse incidents reported to Police Scotland has increased over the past 3 years by 9.5%¹⁰
- In 4 out of every 5 domestic abuse incidents that Police Scotland attend there is female victim and a male perpetrator¹¹
- Data for all forms of gender based violence collected by Violence Against Women Working Group services which include NHS Lanarkshire, Gender Based Violence Services, Women's Aid, ASSIST, Social Work and Housing suggests an increase over the past year of 35.8% but an overall reduction in the past 4 year period of 9.7%

¹⁰ Relates to the 2016/17, 2017/18 and 2018/19 period

¹¹ Relates to the 2015/16, 2016/17, 2017/18 and 2018/19 period

- Generally, the data suggests that gender based violence is a significant issue in North Lanarkshire but not any more so than in other areas of Scotland

Our keys actions:

- We will continue to roll out the training of frontline council housing staff in DASH-Ric assessments to encourage reporting, provide enhanced support and achieve better outcomes for women and children affected by domestic abuse
- We will promote the use of the **Disclosure Scheme for Domestic Abuse** to prevent repeat patterns of abuse occurring
- We will increase awareness of domestic abuse and gender based violence to discourage offending and increase reporting
- We will champion awareness and effective application of the Domestic Abuse (Scotland) act 2018
- We will progress the accreditation of NLC to become an **Equally Safe at Work** accredited employer and encourage other public sector organisations to gain accreditation following wider roll out by Scottish Government



- We will promote respectful relationships via promotion of **Mentors in Violence Prevention** in secondary schools across North Lanarkshire
- We will Implement **Safe and Together**, a model of work with domestic abuse cases where there are children
- We will continue to develop best practice in delivering MARAC, a domestic homicide prevention model in North Lanarkshire
- We will develop and implement a **Violence Against Women** Strategy and Action Plan for North Lanarkshire
- We will work with North Lanarkshire Adult and Child protection committees to increase awareness of adult and child protection amongst individuals and communities
- We will work with North Lanarkshire Adult and Child Protection Committees and MAPPA Strategic Oversight Group to continue to improve strategic linkages across the Public Protection agenda in North Lanarkshire



Priority 5: To improve road safety

Evidence tells us:

- Up to 90% of all accidents and casualties in North Lanarkshire occur on 'through routes' and in town centres
- The number of children killed or seriously injured has reduced significantly in North Lanarkshire over the past decade
- Insurance, seat belt and driving licence offences have all reduced over the past year by 4.4%, 4.8%, and 4.4% respectively
- Driving using mobile phone offences have reduced by 17.9%
- Speeding, disqualified and dangerous driving offences have all increased by 10.6%, 4.9% and 0.7% respectively over 2017/18 and 2018/19

Our key actions:

- We will implement 20mph zones in town centres and main shopping centres and continue to review and deliver 20mph zones on an annual basis
- We will continue to explore innovative methods to reduce speed within our communities and respond to complaints of speeding through education and engineering
- We will work collaboratively with partner organisations to address poor driver behaviour
- We will continue to improve our annual older pedestrian campaign and develop a new inter-generational resource to be delivered at home by school children to their older relatives
- We will continue to support regional and national initiatives on car safety and to improve training for staff to provide specialist advice on in-car safety
- We will continue to provide a dedicated road safety engineering section to investigate accident trends and implement road safety engineering measures where appropriate

- We will continue to invest in the infrastructure of roads to improve cycling and walking safety and improve connectivity within North Lanarkshire
- We will support staff in all education establishments across North Lanarkshire to improve awareness of road safety and develop and online school travel plan
- We will encourage and actively promote the benefits of walking to school
- We will target parents of children in education to deliver key messages on safe transportation and seat belt wearing
- We will support the delivery of on-road cycle training in schools



consultation and involvement – what you told us

This strategy has been co-produced with our communities and all our community safety partners.

This includes:

- Tenants and Residents of North Lanarkshire
- Tenants and Residents Associations
- Community Councils
- North Lanarkshire Youth Council
- North Lanarkshire Housing Co-production Group
- Local Area Partnerships
- Police Scotland
- Scottish Fire and Rescue
- NHS Lanarkshire
- Health and Social Care North Lanarkshire
- Registered Social Landlords

Engagement in relation to the strategy has taken place with a broader range of stakeholders and has included:

- North Lanarkshire Adult and Child Protection Committees
- The Children's Reporter
- The Procurator Fiscal

Engagement opportunities which have informed the development of this strategy have included:

- An online survey
- A stakeholder event
- Local briefings/presentations
- Community Safety Strategy Steering Group
- Community Matters and Local Area Team Engagement opportunities



From the online survey and stakeholder event, the most important community safety priorities reported were:

- Road Safety
- Tackling Antisocial Behaviour
- Tackling Crime
- Street Lighting

205 responses were provided on community safety priorities and there were a number of common themes reported as also important. The word cloud right provides an illustration of the most common themes contained within responses.



Some of the key messages emerging from the Stakeholder Event included:

'Increased awareness is required on gender based violence issues generally for individuals and communities and for particular cohorts of staff'.

'Mental health is becoming a much bigger issue for individuals, communities and services to tackle. Although some may not view as obvious there are clear links between the community safety agenda and mental health'.

'There is disparity on perception and reality of some of the community safety issues. So there is a role for increasing awareness amongst individuals and communities on the evidence, trends and key issues to help people feel safer, as the importance of feeling safe cannot be underestimated, improved awareness can help with this.'

'The benefits of CCTV in North Lanarkshire are significant, not only does it play a key role in tackling antisocial behaviour and assisting people to help feel safer, it also plays a crucial role in finding missing persons and much broader work with the first response emergency services such as the Police, Fire and Rescue and the Ambulance Service'.

'There is a need for services to work better together utilising the existing resources they have, as quite often those individuals with the most complex needs are involved with a number of different services and a high amount of resource is utilised in supporting these individuals. There exists opportunities for us to work more collaboratively in such instances which would achieve better outcomes for the individuals also.'

'There may be scope for more effective media campaigning around road safety, utilising TV and other social media methods available'.



measuring and reporting progress

Monitoring and Evaluation

Robust effective monitoring and evaluation systems are required in order to measure our progress as a partnership towards achieving our key strategic outcomes. To help us measure progress achieved a range of key indicators have been identified. These outcome measures will be monitored on an ongoing basis through the Community Safety Partnership and existing community planning structures. An annual review of the strategy will be carried out by the Partnership enabling the opportunity for consideration of trends in data, progress and emerging issues to be reflected in the strategy review.

More detailed area specific performance measures are monitored through service and organisation specific performance monitoring frameworks.

Reporting

Progress will be reported formally on an annual basis by the Community Safety Partnership to the Community Empowerment Committee, the Community Safety Partnership Forum and the Community Boards. Progress will also be reported to a much wider range of stakeholders which includes tenants, residents, individuals and communities through the publication of the review on the council's website and through the community engagement structures. The first review of the strategy will take place in autumn 2021.

Legislative Monitoring and Reporting Requirements

Legislative statutory monitoring and reporting requirements as set out in the Antisocial Behaviour etc. (Scotland) Act 2004 are overseen by the Housing Community Safety Team and include a comprehensive range of mechanisms which include an annual Scottish Housing Regulator Charter Return, Customer Satisfaction Surveys and internal performance monitoring of key indicators to inform progress and formal reporting.



annex – summary of community safety strategy indicators and actions

| Priority 1: To effectively tackle antisocial behaviour | | |
|---|------------------|---------------------------|
| Indicators | Frequency | Lead Source |
| Number of antisocial contacts | Annual | North Lanarkshire Council |
| Number of antisocial contacts resolved | Annual | North Lanarkshire Council |
| Number of antisocial contacts by locality | Annual | North Lanarkshire Council |
| Number of antisocial contacts by month | Annual | North Lanarkshire Council |
| Number of antisocial contacts due to domestic noise | Annual | North Lanarkshire Council |
| Number of antisocial contacts due to criminal activity | Annual | North Lanarkshire Council |
| Number of antisocial contacts due estate issues | Annual | North Lanarkshire Council |
| Number of antisocial contacts due to harassment | Annual | North Lanarkshire Council |
| Number of antisocial contacts due to non-domestic noise | Annual | North Lanarkshire Council |

| Priority 2: To reduce serious violence and disorder | | |
|--|------------------|--|
| Indicators | Frequency | Lead Source |
| Number of overall crimes recorded | Annual | Police Scotland |
| Number of serious assaults | Annual | Police Scotland |
| Number of murders | Annual | Police Scotland |
| Number of robberies | Annual | Police Scotland |
| Number of hate crimes | Annual | Police Scotland |
| Number of vandalism and malicious mischief crimes | Annual | Police Scotland |
| Number of housebreaking thefts | Annual | Police Scotland |
| Number of detections for drugs | Annual | Police Scotland |
| Priority 3: To reduce harm from unintentional injury and fire | | |
| Indicators | Frequency | Lead Source |
| Number of accidental dwelling fires | Annual | Scottish Fire and Rescue Service |
| Number of fire fatalities | Annual | Scottish Fire and Rescue Service |
| Number of fire casualties | Annual | Scottish Fire and Rescue Service |
| Number of deliberate primary fires | Annual | Scottish Fire and Rescue Service |
| Number of deliberate secondary fires | Annual | Scottish Fire and Rescue Service |
| Number of fires in non-domestic buildings | Annual | Scottish Fire and Rescue Service |
| Number of malicious calls | Annual | Scottish Fire and Rescue Service |
| Number of emergency hospital admissions due to unintentional injury (total) | Annual | NHS Lanarkshire |
| Number of emergency hospital admissions due to unintentional injury (under age 15 years) | Annual | NHS Lanarkshire |
| Number of emergency hospital admissions due to unintentional injury (aged 65 and over) | Annual | NHS Lanarkshire |
| Number of emergency hospital admissions aged 65 and over due to falls | Annual | NHS Lanarkshire |
| Number of suicides | Annual | NHS Lanarkshire |
| Priority 4: To tackle Gender Based Violence and protect people at risk of harm | | |
| Indicators | Frequency | Lead Source |
| Number of domestic abuse incidents reported to Police Scotland | Annual | Police Scotland |
| Number of referrals to VAWG specialist services | Annual | Violence Against Women Working Group Partnership |

| Priority 5: To improve road safety | | |
|---|-----------|-------------------------------------|
| Indicators | Frequency | Lead Source |
| Number of people seriously injured | Annual | Scottish Government, Transportation |
| Number of people slightly injured | Annual | Scottish Government, Transportation |
| Number of children killed | Annual | Scottish Government, Transportation |
| Number of children seriously injured | Annual | Scottish Government, Transportation |
| Number of people convicted of dangerous driving | Annual | Police Scotland |
| Number of people charged for disqualified driving | Annual | Police Scotland |
| Number of people charged of driving licence offences | Annual | Police Scotland |
| Number of people charged of driving without insurance | Annual | Police Scotland |
| Number of people charged of driving without a seat belt | Annual | Police Scotland |
| Number of people charged of driving whilst using a mobile phone | Annual | Police Scotland |



| Strategic Priority 1: To effectively tackle antisocial behaviour | Lead Partner |
|---|--|
| We will better use evidence and intelligence collaboratively to identify key areas of focus to target resources and activity to effectively tackle antisocial behaviour | Police Scotland North Lanarkshire Council Scottish Fire and Rescue Service |
| We will review the Antisocial Response Service to ensure the service is fit for purpose, targets resources efficiently and effectively and meets local needs | North Lanarkshire Council |
| We will adopt a preventative approach by delivering local based initiatives to address and prevent antisocial behaviour | Police Scotland North Lanarkshire Council Scottish Fire and Rescue Service |
| We will work collaboratively to implement environmental changes to minimise antisocial behaviour in public spaces | North Lanarkshire Council |
| We will work in partnership to proactively address challenges around problematic premises | Police Scotland |
| We will decrease the sale of alcohol to young people, focussing on the providers and facilitators of alcohol provision | Police Scotland |
| We will increase the effective use of existing legislation e.g. CRASBO, Fixed Penalty Notices for Environmental Offences, Antisocial Behaviour Orders | Police Scotland North Lanarkshire Council |

| Strategic Priority 2: To reduce serious violence and disorder | Lead Partner |
|--|--|
| We will increase positive engagement with complainers of violence to maximise accurate reporting and investigating | Police Scotland |
| We will reduce residential indoor violence by targeting repeat locations and offenders | Police Scotland |
| We will reduce the number of people carrying weapons and serious violent crimes involving the use of weapons through a range of tactics including prevention, early intervention and enforcement | Police Scotland |
| We will increase the disruption of persons involved in serious and organised crime and reduce the number of violent crimes linked to feuds between crime groups | Police Scotland |
| We will reduce hate crime through effective engagement, education and enforcement | Police Scotland North Lanarkshire Council |
| We will ensure effective use of third party reporting tools for hate crime | Police Scotland North Lanarkshire |
| We will commit specialist officers to investigate patterns of housebreaking and target recidivist offenders | Police Scotland |
| We will increase the use of mobile automatic number plate recognition to reduce road crime | Police Scotland |
| We will encourage prevention activity such as removal of property tools from vehicle and trailers to reduce vehicle crime | Police Scotland |
| We will tackle serious organised crime groups who exploit young people to commit high value vehicle crime | Police Scotland |
| We will collaboratively support education in relation to the risks of drug use, including multi-substance use | Police Scotland |
| We will increase intelligence and detection in relation to the supply of all drugs | Police Scotland |

| Strategic Priority 3: To reduce harm from unintentional injury and fire | Lead Partner |
|---|--|
| We will provide Cook Safe presentations and Home Fire Safety Visits to address the main causality factor of accidental dwelling fires and to reduce resulting casualties and fatalities | Scottish Fire and Rescue Service |
| We will tackle antisocial fire related behaviour through effective use of intelligence and working collaboratively across organisations and partners | Scottish Fire and Rescue Service North Lanarkshire Council |
| We will continue to deliver our Fire Reach Programme to support our personnel to engage effectively with young adolescents | Scottish Fire and Rescue Service |
| We will continue to roll out the new Junior Fire Reach Programme for S1 pupils across all secondary schools in North Lanarkshire | Scottish Fire and Rescue Service |
| We will support the Juvenile Fire setter Intervention Programme through the specialised work of the Community Action Team | Scottish Fire and Rescue Service |
| We will continue to implement the range of fire stopping and active and passive fire safety measures in NLC multi-storey tower blocks | Scottish Fire and Rescue Service North Lanarkshire Council |
| We will work with housing organisations that provide specialist housing to improve fire safety for vulnerable groups using the new national fire safety guidance for specialist housing | Scottish Fire and Rescue Service North Lanarkshire Council Registered Social Landlords |
| We will increase the number and variety of emergencies attended by Scottish Fire and Rescue Service to support partner agencies in protecting the community | Scottish Fire and Rescue Service |
| We will implement a Falls Strategy to reduce the number of slips and trips in the home | Health and Social Care NHS Lanarkshire |
| We will work with the Alcohol and Drug Partnership to promote harm reduction and reduce drug related deaths in our communities | North Lanarkshire Council Health and Social Care NHS Lanarkshire Police Scotland |
| We will proactively target groups at most risk of suicide through effective social media campaigning | Health and Social Care |
| We will improve awareness of suicide amongst our education establishments and consider further how to sensitively increase awareness amongst primary education settings | Health and Social Care |
| We will continue to carry out a range of tailored training on suicide prevention including Suicide Talk, Safe Talk, ASIST and Storm Training . | Health and Social Care |
| We will increase participation in physical activity opportunities recommended to improve bone health and strength, and raise awareness of active health opportunities such as 'get walking' North Lanarkshire to improve health and reduce risk of falls. | Health and Social Care NHS Lanarkshire |
| We will continue to improve home safety for young children through working with our early year providers to raise awareness of home safety with parents | Health and Social Care NHS Lanarkshire |
| We will explore creating a drug related litter group to effectively address and reduce the amount of needles and other drug related litter inappropriately disposed of | North Lanarkshire Council |
| We will continue to implement the actions contained in Lanarkshire's Tobacco Control Strategy to reduce the prevalence of smoking in North Lanarkshire and in doing so reduce the risk of unintentional fire and injury | Health and Social Care NHS Lanarkshire |

Improving Community Safety in North Lanarkshire A Strategy to Improve Lives 2020-2025

| Strategic Priority 4: To tackle Gender Based Violence and protect people at risk of harm | Lead Partner |
|--|--|
| We will promote the use of the Disclosure Scheme for Domestic Abuse to prevent repeat patterns of abuse occurring | Police Scotland |
| We will increase awareness of domestic abuse and gender based violence to discourage offending and increase reporting | Police Scotland |
| We will champion awareness and effective application of the Domestic Abuse (Scotland) act 2018 | Police Scotland |
| We will progress the accreditation of NLC to become an Equally Safe at Work accredited employer and encourage other public sector organisations to gain accreditation following wider roll out by Scottish Government | North Lanarkshire Council |
| We will promote respectful relationships via promotion of Mentors in Violence Prevention in secondary schools across North Lanarkshire | North Lanarkshire Council NHS Lanarkshire |
| We will Implement Safe and Together , a model of work with domestic abuse cases where there are children | North Lanarkshire Council |
| We will continue to develop best practice in delivering MARAC, a domestic homicide prevention model in North Lanarkshire | North Lanarkshire Council |
| We will develop and implement a Violence Against Women Strategy and Action Plan for North Lanarkshire | North Lanarkshire Council |
| We will work with North Lanarkshire Adult and Child protection committees to increase awareness of adult and child protection amongst individuals and communities | North Lanarkshire Council |
| We will work with North Lanarkshire Adult and Child Protection Committees and MAPPA Strategic Oversight Group to continue to improve strategic linkages across the Public Protection agenda in North Lanarkshire | North Lanarkshire Council |

| Strategic Priority 5: To improve road safety | Lead Partner |
|--|---------------------------|
| We will implement 20mph zones in town centres and main shopping centres and continue to review and deliver 20mph zones on an annual basis | North Lanarkshire Council |
| We will continue to explore innovative methods to reduce speed within our communities and respond to complaints of speeding through education and engineering | North Lanarkshire Council |
| We will continue to improve our annual older pedestrian campaign and develop a new inter-generational resource to be delivered at home by school children to their older relatives | North Lanarkshire Council |
| We will work collaboratively with partner organisations to address poor driver behaviour | North Lanarkshire Council |
| We will continue to support regional and national initiatives on car safety and to improve training for staff to provide specialist advice on in-car safety | North Lanarkshire Council |
| We will continue to provide a dedicated road safety engineering section to investigate accident trends and implement road safety engineering measures where appropriate | North Lanarkshire Council |
| We will support staff in all education establishments across North Lanarkshire to improve awareness of road safety and develop and online school travel plan | North Lanarkshire Council |
| We will encourage and actively promote the benefits of walking to school | North Lanarkshire Council |
| We will target parents of children in education to deliver key messages on safe transportation and seat belt wearing | North Lanarkshire Council |
| We will support the delivery of on-road cycle training in schools | North Lanarkshire Council |
| We will continue to invest in the infrastructure of roads to improve cycling and walking safety and improve connectivity within North Lanarkshire | North Lanarkshire Council |

This document can be made available in a range of languages and formats, including large print, braille, audio, electronic and accessible formats.

To make a request, please contact Corporate Communications on 01698 302527 or email: corporatecommunications@northlan.gov.uk

'S urrainn dhuinn an sgrìobhainn seo a chur ann an diofar chànanan agus chruthan, a' gabhail a-steach clò mòr, braille, cruth claisneachd agus cruthan dealanach agus ruigsinneach.

Gus iarrrtas a dhèanamh, cuir fios gu Conaltradh Corporra air 01698 302527 no cuir fios gu: corporatecommunications@northlan.gov.uk

本文档可以多种语言和格式提供, 包括大号字体、盲文、音频、电子和可访问格式。

如欲提出请求, 请致电01698 302527或发送电子邮件至:

corporatecommunications@northlan.gov.uk与企业传播部门 (Corporate Communications) 联系。

Ten dokument jest dostępny w różnych językach i formatach, w tym w formie elektronicznej, dużą czcionką, w alfabecie Braille'a, w wersji audio i przystępnych formatach.

W celu złożenia zamówienia prosimy skontaktować się z Wydziałem Komunikacji Zewnętrznej telefonicznie na numer 01698 302527 lub na adres e-mail: corporatecommunications@northlan.gov.uk

یہ دستاویز کئی ایک زبانوں اور شکلوں (فارمیٹس) میں فراہم کی جاسکتی ہے، جن میں بڑے حروف کی چھپائی، بریل (ناہینا افراد کے لیے ابھرے ہوئے حروف کی لکھائی)، آڈیو، الیکٹرونک اور قابل رسائی شکلیں بھی شامل ہیں۔

درخواست کرنے کے لیے برائے مہربانی 01698 302527 پر کارپوریٹ کمیونیکیشنز سے رابطہ کریں یا اس پتے پر ای میل بھیجیں:

corporatecommunications@northlan.gov.uk

Produced by

NORTH LANARKSHIRE COUNCIL

Business Support and Development

Enterprise and Communities

3rd Floor Civic Centre

Motherwell ML1 1AB

t. 01698 274139

e. [businessdevelopment&support@](mailto:businessdevelopment&support@northlan.gov.uk)

northlan.gov.uk

NORTHLANARKSHIRE.GOV.UK



Accredited
Until 2021

