

## MAT STANDARDS IMPLEMENTATION PLAN

This MAT Standards Implementation Plan has been produced to set out actions being taken in the Integration Authority area:

North Lanarkshire

The lead officer/postholder nominated to ensure delivery of this Implementation Plan is:

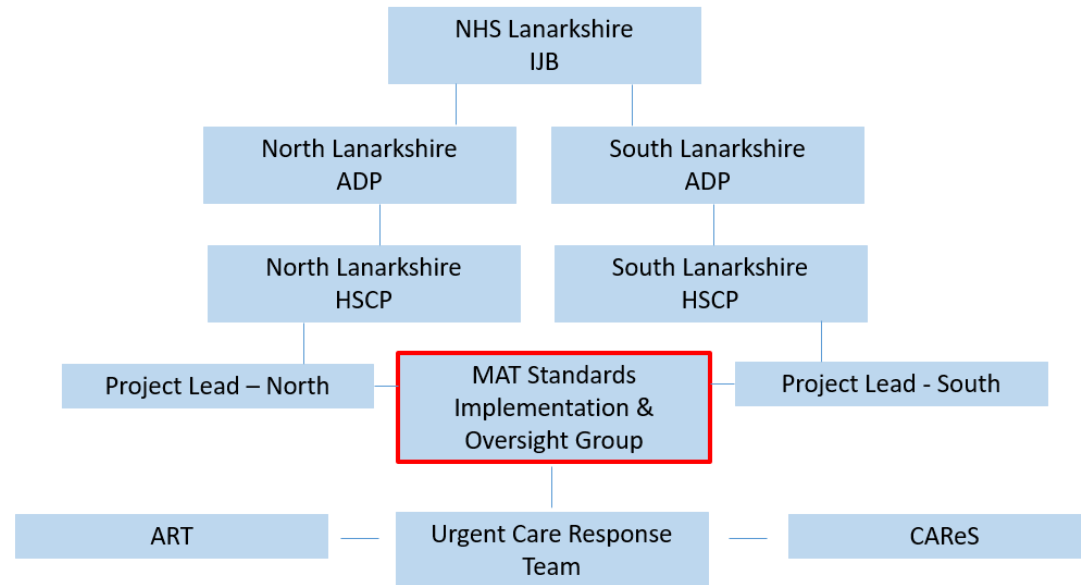
Name	Position/Job Title
Ross McGuffie	Chief Officer North Lanarkshire HSCP

This Plan is intended to ensure that services in the Integration Authority area are meeting the standards and the respective criteria for each standard as set out in the Drug Deaths Taskforce report: [Medication Assisted Treatment standards: access, choice, support](#) published in May 2021.

This Plan has been developed by partners and has taken account of the voices of lived and living experience. The Governance arrangements for local oversight of progress against this Plan, including the role of lived and living experience in this is as follows:

<b>MAT Standards - current status in North Lanarkshire</b>
<ol style="list-style-type: none"><li>1. Same day access - All people accessing services have the option to start MAT from the same day of presentation. RED</li><li>2. Choice - All people are supported to make an informed choice on what medication to use for MAT and the appropriate dose AMBER</li><li>3. Assertive outreach - All people at high risk of drug-related harm are proactively identified and offered support to commence or continue MAT. AMBER</li><li>4. Harm Reduction - All people are offered evidence-based harm reduction at the point of MAT delivery. AMBER</li><li>5. Retention All people will receive support to remain in treatment for as long as requested. RED</li></ol> <p>The proposed model for MAT standards is a Pan-Lanarkshire model based on an assertive outreach delivered via an '<b>Urgent Care Response Team</b>' to be established. Progress on this is expected from August 2022 and will include the use of telehealth and mobile outreach facilities to increase same day access to treatment.</p>

The approach will need to ensure transparency, full oversight and accountability in the delivery and evaluation of the MAT standards. There is an expectation that ADPs will monitor and report on progress via a full evidence review, numerical data and experiential qualitative feedback. There will be ongoing support from the MIST team nationally though Public Health Scotland.



An Oversight and Implementation group has been set up with key stakeholders for implementation of the MAT Standards. The group has agreed to meet monthly and has board Pan-Lanarkshire representation. This include lived experience and family representatives.

The Implementation group will assume responsibility for all clinical and operational aspects of the work required to embed MAT standards across Lanarkshire in keeping with the model proposed.

Updates on progress will be provided quarterly to Health and Social Care Partnership leadership for North and South, NL ADP Board and SL ADP Executive Boards and this will be the responsibility of the Project Leads and group Chairs.

Recruitment for two Project Leads has been commenced. South Lanarkshire HSCP will have its own Project Lead and will liaise with senior stakeholders accordingly. This will be the responsibility of the Project Leads and group Chairs.

There is also a North Lanarkshire steering group to oversee local arrangements as part of a Pan-Lanarkshire approach. North Lanarkshire will develop an individual plan to differentiate any actions required within North Lanarkshire and to be able to monitor progress from a North perspective. This will inform any additional commissioning priorities required for the North via the ADP.

This Plan has been signed off on behalf of the delivery partners by:

Name	Position	Delivery Partner	Date signed
Ross McGuffie	The Chief Officer of the Integration Joint Board	Integration Authority	30/09/2022
Heather Knox	The Chief Executive of the NHS Board	Health Board	30/09/2022
Maggs Thomson	Head of Health and Social Care	Health & Social Care Partnership	30/09/2022
Morag Dendy	Chair of the Alcohol and Drug Partnership	Health & Social Care Partnership	30/09/2022

<b>MAT Standard 1</b>	<b>All people accessing services have the option to start MAT from the same day of presentation.</b>	This means that instead of waiting for days, weeks or months to get on a medication like methadone or buprenorphine, a person with opioid dependence can have the choice to begin medication on the day they ask for help.
April 2022 RAG status	<p>Numerical data from October to December 2021 indicate that, of 171 people who started MAT:</p> <ul style="list-style-type: none"> <li>• none started a prescription on the same day as clinical assessment</li> <li>• 50% (n=86) were seen within 12 days for first prescribing</li> </ul> <p>and 75% (n=128) within 16 days</p>	
<b>Actions/deliverables to implement standard 1</b>		<b>Timescales to complete</b>
<b>Pan-Lanarkshire</b>		
Pan- Lanarkshire Oversight and Governance group established		April – Sept 22
North Project Lead to be identified/ recruited to oversee implementation and MAT 1-10 fully embedded		Sept – Jan 23
Establish North MAT working group to oversee local arrangements.		End October 2022
Establish Urgent Care Response Team – identifying appropriate staffing levels, initiate recruitment/scale up learning from South Lanarkshire Test of Change.		Sep 2022 – April 2023

SOP required setting out prescribing guideline, care pathways and Identify key localities to initiate/test same day access	Sep 2022 – March 2023
Set time line for implementation with key milestones for each locality in NLAN	Nov 22
Review workforce development needs around MAT 1	April – Dec 22
NLADP support experiential/lived experience feedback to this process via commissioned services and existing structures	End Dec 22

<b>MAT Standard 2</b>	<b>All people are supported to make an informed choice on what medication to use for MAT and the appropriate dose.</b>	People will decide which medication they would like to be prescribed and the most suitable dose options after a discussion with their worker about the effects and side-effects. People will be able to change their decision as circumstances change. There should also be a discussion about dispensing arrangements and this should be reviewed regularly.
April 2022 RAG status	<p>Numerical evidence provided for October to December 2021 indicates that the proportion of people prescribed specific medication was as follows:</p> <ul style="list-style-type: none"> <li>• methadone 69% (n=1773)</li> <li>• oral buprenorphine 29% (n=747)</li> <li>• long-acting injectable buprenorphine 1% (n=34).</li> </ul> <p>The clinical guidelines provided include methadone plus short and long-acting buprenorphine as treatment</p>	
<b>Actions/deliverables to implement standard 2</b>		<b>Timescales to complete</b>
<b>Pan-Lanarkshire</b>		
Leaflet/promotional content to be developed for individuals accessing treatment highlighting MAT 2 setting out choices		Nov 22 - March 2023
Standardised approach to be set out including choices currently offered across all services with relevant supporting guidelines to be developed		Nov 22 - March 2023
Review current approaches/processes and resources available to support MAT 2		Sept – Nov 22
Awareness sessions about MAT Standards to be arranged for staff/families and carers		Dec 2022

Establish SLWG to update named patient SOP and key actions required to implement across MAT2 ToC sites and wider localities	Oct 22 – March 23
North MAT work stream lead to be identified to oversee implementation	Oct 22

<b>MAT Standard 3</b>	<b>All people at high risk of drug-related harm are proactively identified and offered support to commence or continue MAT.</b>	If a person is thought to be at high risk because of their drug use, then workers from substance use services will contact the person and offer support including MAT.
April 2022 RAG status	The ADP area reports that a local near-fatal overdose response system is in place. The system links with the Scottish Ambulance Service, tier 2 psychology services, Phoenix Futures, the Lanarkshire overdose response team, navigators, Positive Support, and a highly active recovery community, and that all offer support to individuals and their families to engage in treatment and harm-reduction support.	
<b>Actions/deliverables to implement standard 3</b>		<b>Timescales to complete</b>
<b>Pan-Lanarkshire</b>		
MAT work stream lead to be identified		Oct 22
North review of learning from LORT/Assertive Outreach services including Justice to develop an MAT 3 action plan		End of Oct 22
Assertive outreach capacity to be reviewed with recommendation to NLADP treatment group – further commissioning required		End of Nov 22
Increase and target outreach/retention support		Oct – March 2023
Workforce development - TNA to identify opportunities to engage wider workforce in referral/engagement processes		Sept – Dec 22
Develop standard operating procedure, information sharing protocols and pathways for rapid access to opioid substitution therapy and supportive care		April 22 – March 23





<b>MAT Standard 4</b>	<p><b>All people are offered evidence-based harm reduction at the point of MAT delivery.</b></p> <p>There is a pan-Lanarkshire harm-reduction service providing drop-in access and an outreach van. All six locations offering MAT appointments offer the three core harm-reduction measures (take-home naloxone and overdose, injection equipment provision and blood-borne virus testing) at follow up MAT appointments.</p> <p>Experiential data suggest people have access to harm-reduction interventions and there is widespread awareness of naloxone.</p>	<p>While a person is in treatment and prescribed medication, they are still able to access harm reduction services – for example, needles and syringes, BBV testing, injecting risk assessments, wound care and naloxone.</p> <p>They would be able to receive these from a range of providers including their treatment service, and this would not affect their treatment or prescription.</p>
April 2022 RAG status		
<b>Actions/deliverables to implement standard 4</b>		<b>Timescales to complete</b>
<b>Pan-Lanarkshire</b>		
Work stream lead to be identified		<b>April – Sept 22</b>
Review of current arrangements/processes		October 2022
MAT 4 WAND action plan to be developed		March 2023
MAT 4 workforce development plan to move to more consistent HR screening at each opportunity/appointment		March 2023
Increase naloxone provision targeting to localities of concerns identifying key people who will respond in suspected overdose situations including community link and families		Ongoing

Workforce briefing sessions/training and 'local champions' to be identified for ach locality	Jan 2023

<p><b>MAT Standard 5</b></p>	<p><b>All people will receive support to remain in treatment for as long as requested.</b></p>	<p>A person is given support to stay in treatment for as long as they like and at key transition times such as leaving hospital or prison. People are not put out of treatment. There should be no unplanned discharges. When people do wish to leave treatment they can discuss this with the service, and the service will provide support to ensure people leave treatment safely.</p>
<p>April 2022 RAG status</p>	<p>Documented process evidence was not available to demonstrate different models of care, how people choose care options and the procedures in place to retain people in treatment for as long as requested. There was no evidence that GP shared care is available.</p> <p>Experiential feedback suggests people are positive about the support structures being offered and are retained in treatment for as long as requested. There are requests for more family inclusive practice, and a group reported that they were not aware they could request a copy of their plan.</p> <p>It is reported that there are no restrictions on the time people remain on MAT. However, the ADP area reports a need for increased capacity to retain and provide comprehensive care for those already on MAT.</p>	<p>Treatment services value the treatment they provide to all the people who are in their care. People will be supported to stay in treatment especially at times when things are difficult for them.</p>
<p><b>Actions/deliverables to implement standard 5</b></p>		<p><b>Timescales to complete</b></p>
<p>Pan-Lanarkshire</p>		

MAT 5 Lead to be identified	April - Sept 22
Action plan and time line for MAT 5 to be developed	Dec 22
Review of current SOPs and information offered to individuals in relation to treatment and care	Sept 22 – March 23
Pathways and process review – planned/unplanned discharge rates reviewed to identify appropriate assertive outreach support/follow up opportunities	Sept 22 – March 23
NLADP to review family inclusive practice across treatment and care services – Led By SDF	April – Nov 22

<b>MAT Standard 6</b>	<b>The system that provides MAT is psychologically informed (tier 1); routinely delivers evidence-based low intensity psychosocial interventions (tier 2); and supports individuals to grow social networks.</b>	This standard focuses on the key role that positive relationships and social connection have to play in people's recovery. Services recognise that for many people, substances have been used as a way to cope with difficult emotions and issues from the past. Services will aim to support people to develop positive relationships and new ways of coping as these are just as important as having the right medication.
April 2022 RAG status	<b>We are currently working to the MIST suggested dates for partial 6-10 by April 2023.</b>	
<b>Actions/deliverables to implement standard 6</b>		<b>Timescales to complete</b>
<b>Pan-Lanarkshire</b>		
MAT 6 lead to be identified		Oct 22
Full review of current provision to be carried out		March 2023
Establish SLWG to review, establish and grow appropriate social networks – draw on learning from SDF research and Rapid review from May 2022.		March 2023
Review WFD needs around MAT 6		April 22 - March 2023

<b>MAT Standard 7</b>	<b>All people have the option of MAT shared with Primary Care.</b>	People who choose to will be able to receive medication or support through primary care providers. These may include GPs and community pharmacy. Care provided would depend on the GP or community pharmacist as well as the specialist treatment service.
April 2022 RAG status		
<b>Actions/deliverables to implement standard 7</b>		<b>Timescales to complete</b>
MAT 7 Lead to be identified		Nov 22
Undertake a full review of MAT requirements with recommendations and actions to be considered by oversight group.		Oct 22 – April 2024

<b>MAT Standard 8</b>	<b>All people have access to independent advocacy and support for housing, welfare and income needs.</b>	People have the right to ask for a worker who will support them with any help they need with housing, welfare or income. This worker will support people when using services, make sure they get what best suits them and that they are treated fairly.
April 2022 RAG status	<p>NLADP currently commissions, and has increased capacity, of independent advocacy support services. Work has been undertaken since April 22 to strengthen the link between treatment a service and advocacy with robust referral pathways in place.</p> <p>Housing – Corra funded Breakthrough service established in partnership with Blue Triangle Housing to support people to engage in treatment and support housing and other supports.</p> <p>Housing/Welfare and advocacy service fully involved in ADP structures and sub-groups.</p>	
<b>Actions/deliverables to implement standard 8</b>		<b>Timescales to complete</b>
Identify MAT 8 lead		Oct 22
Review current provision/supports and referral pathways to identify improvements		March 2023
Establish MAT SLWG to understand opportunities to improve pathways/referrals and any WFD needs		
Extend provision (where required) via NLADP procurement/commissioning		Extend provision (where required) via NLADP procurement/commissioning



<b>MAT Standard 9</b>	<b>All people with co-occurring drug use and mental health difficulties can receive mental health care at the point of MAT delivery.</b>	People have the right to ask for support with mental health problems and to engage in mental health treatment while being supported as part of their drug treatment and care.
April 2022 RAG status		
<b>Actions/deliverables to implement standard 9</b>		<b>Timescales to complete</b>
<b>Pan-Lanarkshire</b>		
Identify MAT 9 Lead		October 22
Review of current arrangements/processes		March 2023
Action plan and time line for MAT 5 to be developed		March 23

<b>MAT Standard 10</b>	<b>All people receive trauma informed care.</b>	<p>The treatment service people use recognises that many people who use their service may have experienced trauma, and that this may continue to impact on them in various ways.</p> <p>The services available and the people who work there, will respond in a way that supports people to access, and remain in, services for as long as they need to, in order to get the most from treatment. They will also offer people the kind of relationship that promotes recovery, does not cause further trauma or harm, and builds resilience.</p>
April 2022 RAG status		
<b>Actions/deliverables to implement standard 10</b>		<b>Timescales to complete</b>
<b>Pan-Lanarkshire</b>		
MAT 10 Lead to be identified		March 2023
Review of current arrangements/processes		March 2023
Action plan and time line for MAT 10 to be developed		March 2023

### **MAT STANDARDS IMPLEMENTATION PLAN**

This MAT Standards Implementation Plan has been produced to set out actions being taken in the Integration Authority area:

<p><i>(Integration Authority Area)</i> North Lanarkshire</p>
--

The lead officer/post-holder nominated to ensure delivery of this Implementation Plan is:

Name	Position/Job Title
Ross McGuffie	Chief Officer

This Plan is intended to ensure that services in the Integration Authority area are meeting the standards and the respective criteria for each standard as set out in the Drug Deaths Taskforce report: [Medication Assisted Treatment standards: access, choice, support](#) published in May 2021.

This Plan has been developed by partners and has taken account of the voices of lived and living experience. The Governance arrangements for local oversight of progress against this Plan, including the role of lived and living experience in this is as follows:

*(Summary of governance arrangements for local oversight)*

Governance of our partners/lived and living experience voices is outlined within our Terms of Reference Medication Assisted Treatment (MAT) Standards – Implementation and oversight group



MATIGTerms of  
ReferenceV2.docx

There is good representation of those with lived and living experience through the ADP sub-group structures including the treatment, care and recovery group and the whole family approach group. The MAT standards feature on the agenda as a standing item for discussion and to monitor and review progress. This has been the forum to shape how the MAT standards are to be implemented locally.

We have also commissioned Scottish Drugs Forum to lead peer research across North Lanarkshire to gather feedback on current experiences of treatment and care in relation to the MAT standards. SDF peer research teams are currently collaborating with the MIST experiential team to ensure we are gathering the appropriate feedback in keeping with the national questionnaires that have been developed.

NLADP support team is in the process of establishing lived and living experience panels, working closely with our commissioned services and recovery community. We anticipate these will be fully up and running by the end of January 2023.

This Plan has been signed off on behalf of the delivery partners by:

Name	Position	Delivery Partner	Date signed
Morag Dendy	Chair of NL ADP	NL ADP	As per email
Des Murray	Chief Exec of Local Authority	Local Authority	
Ross McGuffie	Chief of Health & Social Care Partnership	Health & Social Care	
John Holleran	NL ADP Strategic Lead	NL ADP	

### Standards 6-10

- For Standards 6-10, Can you please confirm if you are following the MIST dates suggested in the benchmarking report (partial implement of standards 6–10 by April 2023) or are you working to your own dates to have these implemented by?  
We are currently working to the MIST suggested dates for partial implementation of MAT 6-10 by April 2023.

### Workforce

We are aware areas have previously sent in completed Project specification documents, which detailed there was a great deal of workforce being recruited. Can you please provide an update on your progress with this in your area?

We are looking to find out:

- How many additional staff is/was your ADP seeking to recruit to support the implementation of MAT standards? This has not been determined as yet – the Pan-Lanarkshire oversight group are still to determine this. None.
- How many additional staff have you been able to recruit (as of October 2022)? None  
(For the 2 questions above please confirm the **exact** figure)

The Letter of Direction, issued on 23 June, also made reference to the Implementation Plans being published. As such, can you confirm if your plan has been published and where it can be viewed (eg, IA/IJB/H&SCP/ADP website). If your plan has not yet been published, can you advise when this will take place and where it will be found.

The plan has not yet been published – I have requested North Lanarkshire comms to publish this on the NLC website by the end of November <https://www.northlanarkshire.gov.uk/social-care-and-health/adults/alcohol-and-drugs>

