

# COMMUNITY LEARNING AND DEVELOPMENT

## SUMMER 2024 REPORT



# Community Learning and Development Summer Report 2024

The Community Learning and Development (CLD) service in North Lanarkshire is structured across three delivery teams: Adult Learning & Resettlement, Youth Work and Family Learning. The teams have been working throughout the summer to improve outcomes for adults, young people, children, and families by providing learning opportunities, with a particular focus on engaging learners from more vulnerable communities. In total, 2321 people took part in the summer programme, clocking up 6993 attendances across all activities.

For more information on the work of CLD, you can view our current action plan here:

[\*\*Community Learning and Development Action Plan 2022-2025\*\*](#)

During the summer of 2024, CLD staff teams delivered an action-packed programme full of informal learning opportunities; new experiences and skills; outings and residential stays; the chance to gain qualifications; spend time with friends and family meet new people; and most importantly... have fun!

Health and wellbeing have been a focus for all with active health walks, healthy eating, outdoor learning, relaxation, and pampering sessions, alongside sports and active games.

Children and young people were supported in their school transitions with lots of activities to help them adapt to their new primary or secondary schools.

Our adult learners were busy earning new qualifications in a variety of subjects, including numeracy, ESOL, IT, cooking, employability skills and Gaelic. Children and young people earned youth awards and accreditations, in addition to SQA units in a range of subjects.

Lots of trips and residential stays took place, offering our learners the chance to explore the cities of Glasgow and Edinburgh as well as island life at Millport on The Isle of Cumbrae, to closer to home favourites such as Summerlee Museum, and North Lanarkshire's wonderful country parks.

Thank you to all the staff, volunteers and partner organisations for providing such an action-packed summer of community-based educational and fun activities, and thanks to all the participants who came along and took part!

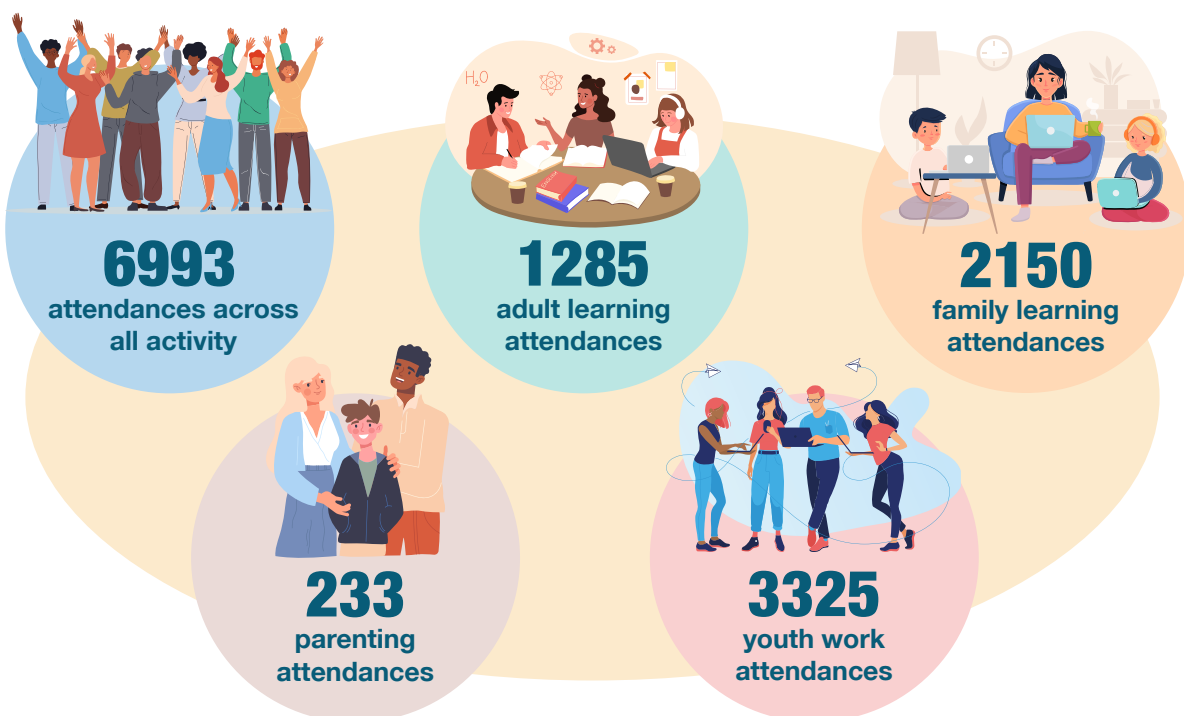
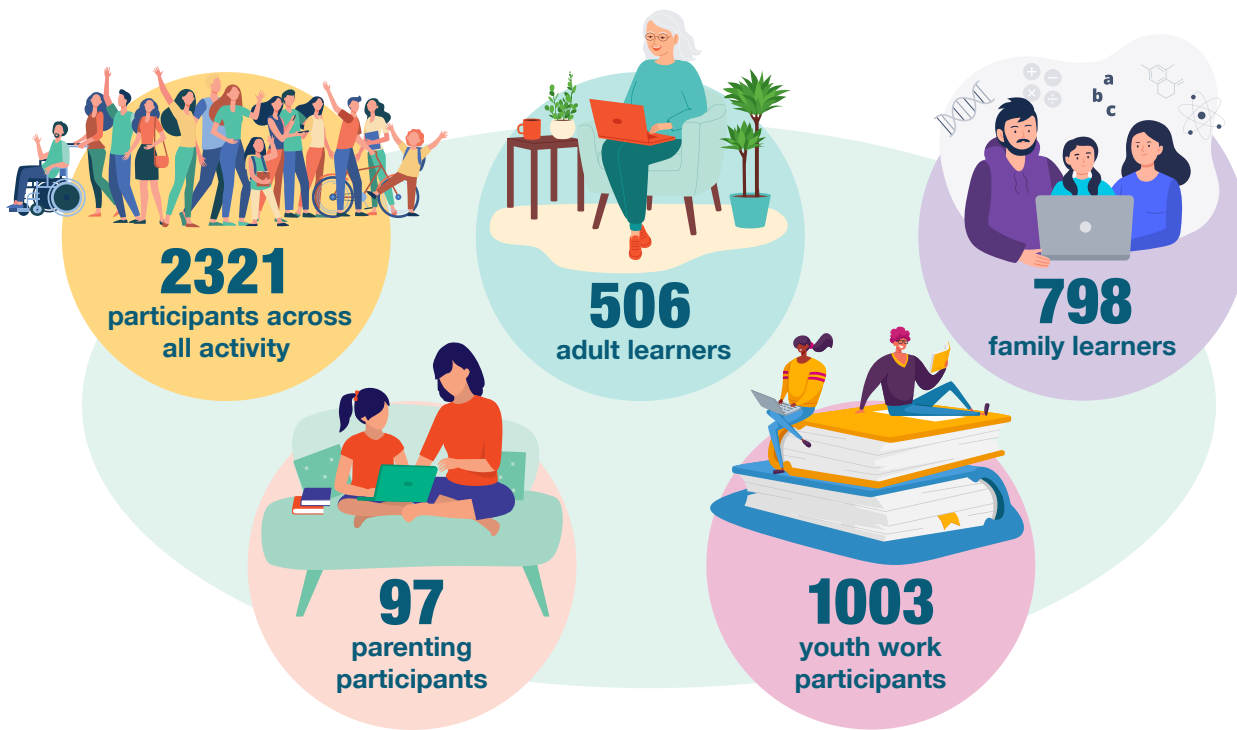
To read more detail about all the activities and view the photo gallery you can read the summer newsletter here:

[\*\*CLD Summer Newsletter 2024\*\*](#)



## At a Glance

Across North Lanarkshire, Community Learning and Development staff teams delivered an action-packed summer full of informal learning opportunities; new experiences and skills; outings and residential stays; the chance to gain qualifications; meet new people; spend time with friends and most importantly...fun!



# Community Learning and Development Summer Report 2024

A full breakdown can be seen in the table below.

North Lanarkshire, Community Learning and Development				
27th June 2024 - 13th August 2024	Adult Learning	Family Learning	Parenting	Youth Work
Distinct clients under 16	110	428	22	822
Distinct clients 16 and over	396	370	75	181
Total number of distinct clients attending theme	506	798	97	1003
Total number of distinct clients attending all themes	2321			
Total number of attendances at each theme	1285	2150	233	3325
Total number of attendances at all themes	6993			





Produced by

**NORTH LANARKSHIRE COUNCIL**

Community Learning and Development Section

e. [CLD@northlan.gov.uk](mailto:CLD@northlan.gov.uk)

**[NORTHLANARKSHIRE.GOV.UK](http://NORTHLANARKSHIRE.GOV.UK)**

**This document can be made available  
in a range of languages and formats,  
including large print, braille, audio,  
electronic and accessible formats.**

To make a request, please contact

Corporate Communications at:

[corporatecommunications@northlan.gov.uk](mailto:corporatecommunications@northlan.gov.uk)