

NEWMAINS & DISTRICT

Community Action Plan 2025-2030



foreword

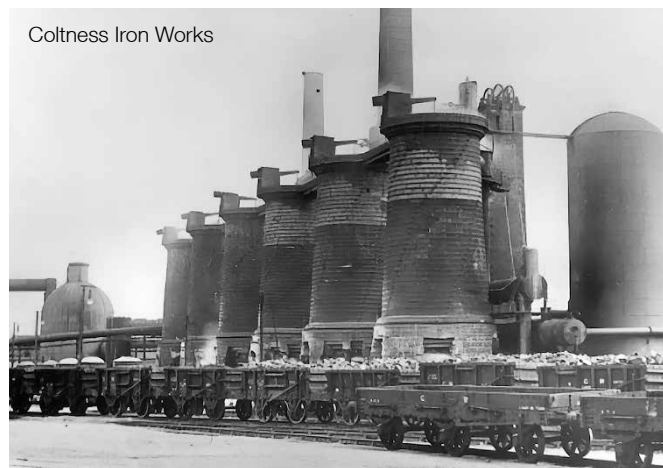
Newmains is a village and former mining community on the eastern edge of Wishaw, North Lanarkshire, Scotland, 18 miles south-east of Glasgow. Newmains & District is considered part of Wishaw board area situated within Ward 20 Murdostoun, however Morningside and Bonkle borders into Ward 19 Fortissat.

The name Murdostoun was derived from Murthock and ton, meaning the dwelling of Murthock. The Murthock family can be traced as far back as the reign of Alexander III of Scotland and Murdostoun Castle still exists and was recently used as an alcohol-related brain damage care unit.

Newmains cross is historically a crossing point that merges two main trunk roads between the A73 and the A71. Newmains & District encompasses the villages of Crindledyke, West Crindledyke, East Crindledyke and Morningside.

The story of all the villages in the area surrounding Newmains and Wishaw is essentially the story of one of the most successful ventures into heavy industry in Scotland. Three iron works, the Omoa Ironworks, the Coltness Iron Company and the Shotts Iron Company comprise the earliest and perhaps the most important concentration of iron and steel manufacture in Scotland, with Newmains located at the heart of this success.

Newmains, derived from the “New Town” established to house hundreds of workers who came to settle and work for the Coltness Ironworks due to the high rate of pay



offered, with the original old town being Morningside which is 600 years old.

The Coltness Iron Works was established in 1837 by industrialist, Henry Houldsworth who, foreseeing the gradual demise of the once booming cotton industry, decided to diversify into minerals. On a visit to the Shotts Iron Company in 1836, Henry Houldsworth heard a rumour that the nearby Coltness Estate was to be sold. He lost no time in commissioning a survey which showed a large mineral field on the property. The estate was soon purchased from the trustees of Sir James Steuart Denham enabling the fortuitous establishment of an iron works on a proven mineral field. As well as the ‘Blackband’ ironstone, there were considerable coal seams to be explored which would provide the fuel necessary to feed the furnaces.

Cold water used for cooling the iron made at the ironworks, ran down into the “hot water pond” making the water hot hence the name. The hot water pond still exists today.



Coltness Brick

Locomotive wheels were the largest output of Coltness Ironworks, supplying across Britain and shipped abroad.

Transport problems were solved in 1841 with a rail link to Coatbridge and the business prospered, expanding into Ayrshire with the opening of the Dalmellington Iron Works and sinking several new coal-pits in the area. One reason for its success was the self-contained nature of the company operations, providing its own coal and its own limestone from quarries on the estate.

The company also entered the brick-making business both to provide bricks for its own needs and also for sale to a wider market. In 1909 they expanded into Portland Cement manufacture.

The Coltness works survived until very recently as a railway sleeper manufacturing facility for Tarmac but were demolished in 2004.

Newmains is proud to display and home a prominent war memorial located in the centre of the four ways roundabout ensuring it is visible to all passing through the village at a busy intersection for commuters. This is in tribute to the men of Newmains and Cambusnethan Parishes who gave



Jim Murray Statue

their lives in the Great War and WW2 and a beautiful memorial for the two parishes.

There is also a monument in memory of Jim Murray the bantamweight boxer from Newmains who died at the age of 25 in 1995 due to a head injury during a fight causing a bleed to the brain. This memorial statue is placed in the gardens at the junction of the roundabout. As a result of his death, safety legislation and protocols were heightened in the sport of boxing.

The community of Newmains & District is steeped in history and legacies, with many of the older generation keen to safeguard its heritage and eager to ensure a stronger community spirit for all residents across the community, with the aim of forging a sense of belonging to be proud of for the future generations, and those residing and working in Newmains.





contents

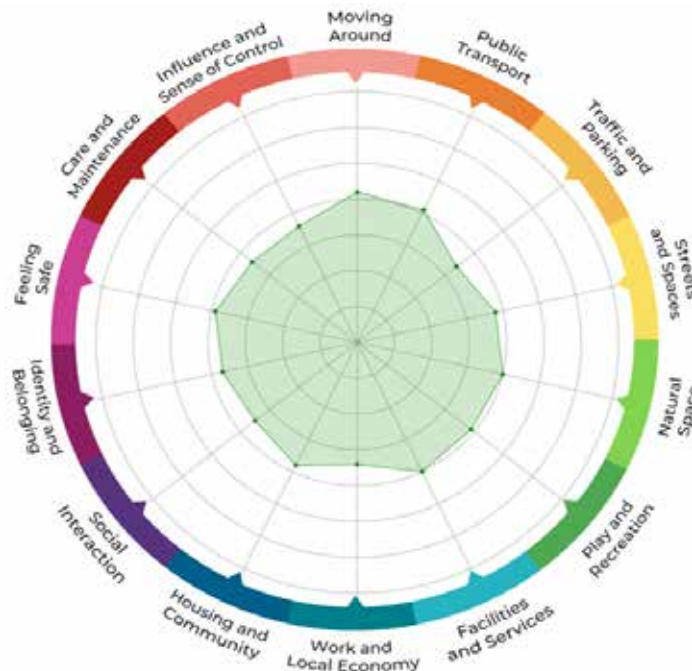
	page
Introduction	05
Our Community Now	07
Our Shared Vision	10
What's Good About Newmains?	11
What Could be Better about Newmains	12
Theme 1: Traffic & Parking	13
Theme 2: Work & Local Economy	14
Theme 3: Social Interaction	15
Theme 4: Care & Maintenance	16
Theme 5: Influence & Sense of Control	17
Linking to North Lanarkshire	18
Council's Local Outcome Improvement Priorities	18
How We Make it Happen	18

introduction

In partnership with Newmains & District Community Council and the anchor organisation Newmains Community Trust, North Lanarkshire Council's Community Partnership Team made a commitment to facilitate and support the community to develop a Community Action Plan tailored to Newmains & District.

Working in partnership, the organisations used the Place Standard tool for local community planning and sustainable community development aimed to encourage active citizenship and build local democracy. This provides a simple way to think about the physical and social aspects of a place and identify any issues that need improved. You can easily see what is working well, the fuller the shape, the better served your community is, enabling communities to devise a community action plan which makes a case for the things that the community thinks are important and wishes to make happen.

The engagement process consisted of a range of engagement events and activities including a coffee morning, an evening drop-in session, an Artwork project for children and young people for the gallery, main engagement event, check-in week, a pre-launch consultation and launch event. We carried out public consultation to identify local needs and priorities, incorporating the use of a booklet version of the Place Standard survey at the engagement event, delivered to keys venues within Newmains & District, as well as an on-line option, and an on-line pole and in-person option for the check-in week.



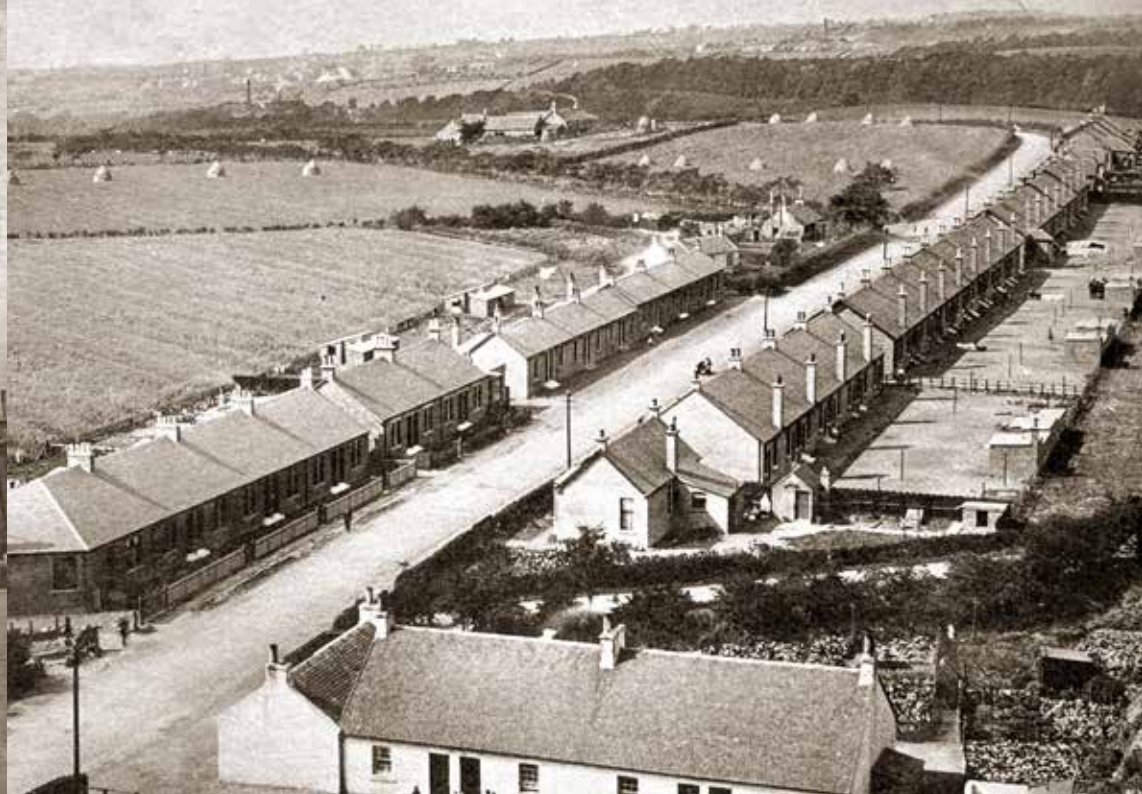
Community Consultation

This enabled us to capture a graphic picture of Newmains & District, highlighting its strengths and weaknesses.

The Community Learning & Development (CLD) Parent Voice engagement results were combined with the overall consultation process.

Community members have their say





our community now

Newmains is situated at the edge of Wishaw in North Lanarkshire, Scotland, 18 miles south-east of Glasgow. It is served by Newmains and District Community Council and sits within Ward 20 - Murdostoun and the borders of Morningside and Bonkle fall under Ward 19 - Fortissat Community Board.

Population

The total population of Newmains is around 5,430, with around 60% being of working age.

Housing

Newmains has a range of housing including detached, semi-detached, terraced and flats/apartments. Around 54% of housing is owner occupied, just over 35% being council/housing association tenants and 10% being private rentals, according to the 2022 Census. The total number of home units is 2,426 with 330 Detached, 720 Semi-detached, 689 Terraced with 1372 being Flats or Apartments. **(Source: Census 2022)**

Health & Care

The main hospital is Wishaw General Hospital, patients are also served by Hairmyres and Monklands Hospitals. There are General Practitioners based in Newmains at Newmains Health Centre with pharmacy, doctors and children's dentistry, and at Manse Road Medical Centre, with further practitioners nearby at the Houldsworth Centre in Kenilworth Drive in Wishaw. Other care services in Newmains include Private and NHS dentists, pharmacies

dispensing prescriptions and offering vital over-the-counter medications and advice and an optician.

Community Assets

Newmains United Football Club was formed in 2006, previously known as Coltness United FC established in 1934 by Coltness Iron works and locally nicknamed the Dallies. This nickname was derived many years ago from a man who worked for Coltness Iron Works who bred the Dahlia flower.

Newmains Community & Conference Centre operated by Newmains Community Trust and serves the community of Newmains & District, providing a place for local people to socialise and come together for events and activities, offers opportunities to develop skills and experience that will enrich our community. At Newmains Community Trust services and supports are provided to meet the needs and improve the lives of those who live and work in Newmains and surrounding villages.

The Centre is a community owned facility with conference space, meeting rooms to hire, as well as running Newmains Community Café offering hearty meals, home-baking and

full catering packages for events. A range of activities and events are offered to all ages. The building also houses Newmains Library.

Local Economy, Shops & Services

The local economy in Newmains is a mix of independent, family-owned businesses and local services, reflecting its history as a former mining community. In October 2007, an ASDA superstore opened in the town, now open 18-hours per day. This was the first major supermarket chain to open a store in the town. The main shopping areas, Manse Road and Main Street, have some shops, with a few in surrounding streets including Amazon Bathrooms & Kitchens, Pixie Petals, Brunton Butchers, Howieson of Newmains, Scotmid Co-operative house a Post Office, Keystore, Londis, Spar at Shell, and Newmains Home & Hardware Store.

Newmains hosts 11 various food restaurants with the majority of these being take-away services, the only fully seated place to eat is Newmains Community Cafe. There is one public house in Newmains, Robin's Bar. Residents have access to places of worship including Newmains Gospel

Church in Bonkle, Coltness Memorial Church, and St Brigid's Roman Catholic Church, with Cambusnethan Old and Morningside Church nearby. The newest addition to the area is a Day-To-Day Convenience Store sited where the old Fourways Pub once stood.

Around 44% of people in Newmains are economically active, with just over 64% of these being in full time employment. This is on par with Scotland on a whole at just over 63%.

(Source: Census 2022)

Education & Childcare

Schools include Newmains & St Brigid's Primary & Nursery Schools at the Community Hub, Morningside Primary School and Abernethyn Family Learning Centre.

Newmains & St. Brigid's Community Hub



Newmains has a current school roll of 181 pupils, with a capacity of 314 for P1 to P7. The school provides a nursery class meaning that education is provided to children from age 3 to 12 years. Benefiting from being a new school hub, Newmains has a shared flexible learning space, under cover outdoor learning area and a small reflection room.

The shared learning space includes a large PE hall, cooking lab, nurture room, e-learning zone, drama box, multi-purpose room and STEM room. The school also benefits from extensive outdoor learning areas with 3G multipurpose sports pitch, themed play area and forest school (growing) on site. St Brigid's has a current school roll of 157 pupils, with a capacity of 242 for P1 to P7, and shares the indoor and outdoor learning spaces above with their friends at Newmains Primary. Newmains and St Brigid's Community Hub hosts several community activities in the evening and at weekends including Tenants and Residents Associations, Councillors' surgeries and local community meetings in the communal hub space open to the community.

Morningside has a current school roll of 182 pupils, with a capacity of 248 for P1 to P7. Abernethyn Family Learning Centre has a capacity for 87 children of pre-school nursery age. This is a new purpose-built building with an open layout and design to support children's play and routines, both indoors and outdoors, including quiet and cosy spaces available throughout the large playroom, areas for children to rest and relax, a large sandpit inside allowing children to fully immerse in sensory play experience, and literacy and numeracy resources available in all play spaces. The outdoor area offers experiences of different ground surfaces, sloped areas and opportunities for play supporting active, physical and creative play. Nearby Secondary schools serving young people from Newmains & District are St Aidan's and Coltness High School.

Further education and adult learning opportunities are provided by the nearby Motherwell College, as well as community education by CLD, CAB, Routes to Work and the Wise Group offering a variety of adult learning opportunities. Local organisations offer volunteering, work placements and work experience and hands on training opportunities for all ages.

Key Features

Modern Facilities: The Local School Hub and the NCT Centre boast modern facilities and resources.

Focus on Inclusion: Local schools and organisations strive to create inclusive learning environments for all students.

Community Involvement: Strong community involvement enhances educational opportunities for children and adults.

Community Activities

Newmains boasts a vibrant community spirit with a range of activities for people of all ages and interests, from Baby & Toddlers to Pigeon Fanciers.

Community Groups & Organisations

Newmains Community Trust: Plays a central role in organizing and supporting community events and initiatives and acts as an anchor organisation for local and national initiatives on behalf of the Third and Statutory Sectors.

Local Sports Clubs: Football, bowling, and other sports clubs provide opportunities for fitness and social interaction.

Community Gardens: Offer opportunities for gardening, growing food, and connecting with nature.

Senior Citizens' Groups: Provide social activities and support for older residents.

Community Events

Newmains Gala Day: A popular annual event featuring games, entertainment, and community stalls.

Local Festivals and Fetes: Occasional events celebrating local culture and traditions.

Community Dinners and Events: Opportunities for residents to come together and socialise.

Community Facilities

Newmains Community & Conference Centre: Provides a space for the community to meet, host and attend groups and events and take part in various activities.

Youth Activities: Wishaw and Shotts CLD Youth team offer activities for young people. NCT & Cairney Cycles offer After School cycle clubs and bike repairs. NCT offer Youth volunteering and Work experience opportunities.

Outdoor Activities: Opportunities for outdoor activities like hiking, cycling, and nature walks.

Church Halls: provide a venue for gatherings and celebrations.

Newmains & District Gala Day



Key Characteristics

Strong Community Spirit: Newmains has a strong sense of community, with residents actively involved in local activities and events.

Focus on Inclusivity: Many community activities are designed to be inclusive and accessible to people of all ages and backgrounds.

Volunteering: Volunteering plays a vital role in the success of many of the community's activities.

Environment

The local environment in Newmains offers a mix of urban and rural settings with opportunities to enjoy nature.

Green Spaces

Local Parks: Newmains has local parks and green spaces within the community, providing opportunities for walking, relaxing, and enjoying the outdoors.

Nearby Parks and Woodlands: Braedale Hill Nature Reserve and nearby Greenhead Moss Nature Reserve.

A Summer Fayre at the NCT Centre



Greenhead Moss Nature Reserve

Opportunities for Nature

Walking and Cycling: Enjoy leisurely walks or bike rides along local paths and trails.

Community Gardens: Newmains Community Trust has Community Gardens and an Orchard providing opportunities for local people to connect with nature, learning about tending plants and grow food.

Traffic & Transport

Buses are the only form of public transport in Newmains. Services by First Glasgow (266,X11), JMB Travel(56) and Stuart's (365,367), provide bus routes to Wishaw, Motherwell, Hamilton, Glasgow. Newmains is located on the junction of the A71 and the A73, which provide road links to most parts of Scotland. The M8 motorway with access to Glasgow and Edinburgh is 4.5 miles (7.2 km) north of the village, and the M74 motorway with access to Glasgow and Carlisle is 7 miles (11 km) west.

The Coltness branch from the West Coast Main Line at Garriongill terminates previously used only for the transport of coal from the nearby open cast mining facility, is now disconnected about five years ago. It did get used for the Open Cast development in Morningside, until about 2010.

shared vision

“To be a thriving and vibrant community where everyone feels valued, respected, and connected, built upon a strong sense of heritage and a collaborative spirit.”

Core Values

Heritage & Identity: To celebrate and preserve the rich history and heritage of Newmains, ensuring it remains a source of pride and inspiration for future generations.

Collaboration & Partnership: To foster strong partnerships between residents, businesses, organisations, and public sector bodies to address local challenges and capitalise on opportunities.

People-Centred Approach: To prioritise the needs and well-being of all residents, ensuring that everyone has the opportunity to thrive and contribute to the community.

Sustainability: To create a sustainable community that protects and enhances the environment, promotes social and economic well-being, and ensures a thriving future for generations to come.

Inclusivity & Diversity: To create a welcoming and inclusive community where everyone feels valued and respected, regardless of their background, age, or ability.



what's good about newmains?

From our consultation, we gathered comments from a varied cross section of the community.

Here is what they told us:

"Plenty of free, off-street parking"

"Plenty of volunteering opportunities"

"Lots of small businesses"

"Newmains has lots of (social) groups"

"The School Hub"

"The streets are mostly clean"

"I've seen groups out litter picking"

"We have active local councillors"

"I am happy that I am listened to"

"The Community Council"



***Plenty of
off street
parking***

***Newmains
Community
Cafe***

***The
Community
Council***

***The NCT
Centre and
Library***

what could be better about newmains?

“Too Many Bookies, Takeaways and Salons”

“Lack of accessible/disabled parking at shops”

“Nowhere to gather/socialise in evenings e.g. family restaurants

“No access to sports or fitness without travelling out of Newmains”

“Too many pavements needing repaired and too many potholes”

“Too much fly tipping”

“Nothing for the kids to take pride in”

“Feels like it’s the same people being listened to all the time”

“People don’t always know where to go or who to ask for help”



Terrible travel connections for finding work

Lack of parking on Manse Road means people park on pavements

Nothing for young people to do in evenings

Too Many bookies, takeaways and salons

theme 1: traffic & parking

3

NORTH LANARKSHIRE COUNCIL
COMARPAIDH LANNARCAIDH & TÈIDH

TRAFFIC & PARKING

How do traffic and parking affect how I move around my place?

Icons: Car, Pedestrian, Bicycle, Truck, Wheelchair, Train, Bus, Person, Motorcycle



Traffic and parking affect how people move around. Good arrangements can help people to get the most out of their place.

Improvements to current parking provision

- Improve awareness of current parking provision working with the relevant service to introduce new and improved signage.
- Identify areas that can be developed to increase number of parking spaces available.
- Encourage residents to walk or cycle for short trips to shops and facilities by improving walking and cycle routes, cycle provision and cycle parking.
- Manage obstructive parking in key areas with fines and/or patrols.
- Increase number of accessible parking spaces on Manse Road
- Improve local road and pavement conditions by maintaining potholes and ensuring works are completed to a high standard.

Encourage alternate modes of transport

- Encourage walking and cycling by developing a well-connected and maintained Active Travel Network.
- Improve public transport links to other areas not just to Wishaw or Shotts

Reduce Speeding/Traffic Volume in Identified Areas

- Introduce calming measures in key areas most affected by speeding and traffic volume.



theme 2: work & local economy

8

NORTH LANARKSHIRE COUNCIL
COMHAILLE Siorrachd Lanark & Traid

WORK & LOCAL ECONOMY

How active is the local economy in my place and there are good opportunities for work, volunteering and training?

A strong local economy with a mix of businesses can help to make places feel active and attractive - most people enjoy spending time in lively places. Access to good quality jobs, volunteering and training can help us to stay active and healthy, provide social connections, a sense of identity and satisfaction, and an income where paid.

Increase opportunities for work and volunteering in the area:

- Attract more businesses to the area.
- Encourage local businesses to hire local people.
- Work with businesses and organisations to provide more volunteering opportunities.

- Invest in local people by providing learning and training opportunities that make them attractive employment prospects.

Encourage a more diverse range of local businesses and investment in the area:

- Improvement to infrastructure (roads/parking) could encourage more businesses to the area and support business growth.
- Encourage more local businesses to be involved in Community Partnerships
- Focus on the area's unique qualities, such as its skilled workforce, cultural heritage, or natural resources, to attract businesses that align with these strengths.



theme 3: social interaction

10

NORTH LANARKSHIRE COUNCIL
COUNCIL
SÒBHAIRE
SÒBHAIRE LANARKSHIRE A THATH

SOCIAL INTERACTION

How good is the range of opportunities which allow me to meet and spend time with other people?

The provision of facilities and amenities that offer people of all ages places to socialise, exercise and entertain their families is vital to create a thriving community. Newmains is in a positive position with the Newmains Community Trust as an anchor organisation, with a thriving café and conference centre, a new School Community Hub and plenty of spaces and buildings that could be utilised more effectively to service the community.



Attract a local restaurant/community public house to the community

- Engagement indicates the community needs a family eatery with garden/play area for kids, as well as venues to socialise in the evenings such as local pub/club/restaurants/coffee shops and to reduce the number of take-aways. Liaison with NLC in relation to approval of lets to work to seek preferred businesses to Newmains.
- Contribute to Community Wealth Building through local businesses.

Attract leisure facilities to improve community health and wellbeing

- Provision of leisure and entertainment facilities for families, such as cinema, bowling alley, sports centre, and food outlets.
- More activities locally for families, adults, teenagers, young people and the older generation.

More focus on outdoor spaces to improve health and wellbeing

- Provision of outdoor gym, bike track, MUGA, better football pitches, walking and cycling spaces, safe, well-lit green spaces for walking.
- Better pathways, pavements, parking spaces, travel routes are required to facilitate local people and enable them to move around from A to B easier.



theme 4: care & maintenance

13

NORTH LANARKSHIRE COUNCIL
COMHABAIL SÒBHRACHD LANNAIRIG A THÀTH

CARE & MAINTENANCE

How well is my place looked after and cared for?

Icons: Car, Wheelchair, Person, Information, Recycling, Bicycle, Water

The appearance of a place is important to those who reside and work there. Ensuring a place is attractive to live and work in, is vital to people taking pride in and care of it, attracting businesses and key to its effective local economy and community wealth building.

Improve the appearance of the village environment and greenspaces:

- To improve pathways, pavements, roads and parking by maintaining, repairing, cleaning drains, and ensuring improved lighting, liaise and work with the relevant services.
- To improve grass, hedge cutting and weed killing along pathways and roads, liaise and work with the relevant services.

- Regular maintenance of greenspaces to make them safe to use and attractive via working with services and promoting community groups who have an interest in becoming involved.
- Reduce fly tipping, littering, dog fouling, graffiti and vandalism, work with relevant services and build community involvement in litter-picking and community clean ups, negotiate improved bin placement, and campaign to the local community to take pride in their area.

Regeneration of derelict land and buildings

- Involve local people of all ages in the decision-making processes of what they want and need in the area and how they wish to use spaces.
- Liaise with Housing Services on provision of improved housing and maintenance of existing housing.
- Attract businesses for the services that are required in Newmains to Newmains to contribute to Community Wealth Building.



theme 5: influence & sense of control



Having a sense of influence and control over local decisions about the place that they live is key to ensuring residents feel listened to and represented by the various authorities who service the village. Feeling heard, supported and involved in community decision-making and how money is spent on the community, helps to encourage local people to invest and feel pride in where they live.

Consultation and engagement

- Increase and improve effective consultation and engagement with local people on their area, by raising awareness on how people can become involved in decision making, local investment and improvement projects.

- Grow and strengthen Newmains and District Community Council to effectively represent the voice and views of local people.
- Improve partnerships and communication between the voluntary organisations in Newmains to ensure a more joint up approach to community activities, events and engagement.

Promote community activities

- Improve the communications with local people by promoting activities and events, raising awareness of services available and listening to what they need.
- Improved partnerships between services and organisations locally will encourage working together, more cohesively, joining resources to provide outcomes that do not duplicate, and instead promote together.



Linking to North Lanarkshire Council's Local Outcome Improvement Priorities

Our Newmains & District Community Action Plan is a bottom-up approach. It sits together with the North Lanarkshire Local Outcome Improvement Plan to encourage a joined-up approach to community development and improved service provision.

The Newmains & District Community Action Plan represents the views and aspirations of the local people of Newmains & District and can be used to help encourage partnership working between local organisations, public agencies and service providers, all working together to improve the quality of life for the people of Newmains.

Wishaw Local Outcome Improvement Priorities	Newmains Community Action Plan Themes
Community Safety	Traffic and Parking
<ul style="list-style-type: none"> Tackling Poverty and Inequalities Digital Inclusion 	Work and Local Economy
<ul style="list-style-type: none"> Community Engagement Mental Health and Wellbeing Environment 	<ul style="list-style-type: none"> Social Interaction Care and Maintenance Influence & Sense of Control



how we can make it happen?

This report summarises the findings of the community views survey carried out in Newmains during August 2024 - November 2024.

The survey was carried out as part of the consultation and engagement process that informed the preparation of this five-year Community Action Plan.

Community Action Plan Key Objectives:

Improve current parking provision	Attract leisure facilities to improve community health and wellbeing
Encourage alternate modes of transport	More focus on outdoor spaces to improve health and wellbeing
Reduce Speeding/Traffic Volume in Identified Areas	Improve the appearance of the village environment and greenspaces
Increase opportunities for work and volunteering in the area	Regeneration of derelict land and buildings
Encourage a more diverse range of local businesses and investment in the area	Consultation and engagement
Attract a local restaurant/community public house to the community	Promote community activities

Some of these actions will be out with the community's control, however there are plenty of actions we can take together to make Newmains better.

How to get involved and be kept informed:

The Newmains & District Community Action Plan is not just for the few but for everyone, every contribution, no matter how small, can make a difference. By reading this document, getting involved and taking action, you can help to create a stronger, more vibrant community for everyone.

There are lots of ways to get involved:

- Register to volunteer with a local Community Organisation
- Join your Community Council
- Attend Community Board Meetings (open meetings for all)
- Join a Community Group that aims to make Newmains a better place.
- Attend local community events, consultations and information sessions.

If everyone did one small, positive thing for their community every day, then what a difference that would make! Thanks to members of the community who contributed the photographs and comments within this community action plan.

To find out more information about how to be more involved in achieving the Newmains & District Community Action Plan please contact:

maryanne@Nctcentre.co.uk
newmainscommunitycouncil@gmail.com
CommunityMatters@northlan.gov.uk

This document can be made available in a range of languages and formats, including large print, braille, audio, electronic and accessible formats.

To make a request, please contact Corporate Communications at: corporatecommunications@northlan.gov.uk

'S urrainn dhuinn an sgrìobhadh seo a chur ann an diofar chànanan agus chruthan, a' gabhail a-steach clò mòr, braille, cruth claisneachd agus cruthan dealanach agus ruigsinneach.

Gus iarrtas a dhèanamh, cuir fios gu Conaltradh Corporra aig: corporatecommunications@northlan.gov.uk

Niniejszy dokument można otrzymać w wielu różnych językach i formatach, w tym również dużym drukiem, alfabetem Braille'a, w wersji dźwiękowej, elektronicznej i w innych dostępnych formatach.

Prośby należy składać na ręce zespołu ds. komunikacji drogą elektroniczną na adres: corporatecommunications@northlan.gov.uk

此文件可以多种不同语言和格式提供, 包括大字体、点字、音频、电子和易读格式。

如想提出请求, 请联系企业传讯部: corporatecommunications@northlan.gov.uk

اس دستاویز کو مختلف زبانوں اور صورتوں بشمول بڑے حروف، بریل، آڈیو، الیکٹرانک اور قابل رسائی صورتوں میں فراہم کیا جاسکتا ہے۔
براہ کرم درخواست کے لیے کارپوریٹ کمیونیکیشنز سے اس پر رابطہ فرمائیں: corporatecommunications@northlan.gov.uk