

NORTH LANARKSHIRE'S PATH TO NET ZERO (2045)

Contents

Vision	3
Introduction.....	4
A Climate & Biodiversity Emergency	4
The United Nations Sustainable Development Goals.....	5
North Lanarkshire (Overview)	6
The Plan for North Lanarkshire	6
North Lanarkshire Emissions	7
The Council’s Emissions	8
Climate Champions.....	8
Strategic Climate Objectives	8
Targets	9
Our Key Mission Statements by 2045.....	10
Building & Energy	10
Transport.....	10
Waste & Circular Economy.....	10
Procurement	10
Adaptation	10
Finance	11
Planned reviews and updates.....	12
Appendix 1 Actions.....	13
Appendix 2 The Council’s Carbon Boundary	22
Appendix 3 Supporting Strategies and Plans.....	23
Appendix 4 North Lanarkshire Council.....	24
Our Services.....	24
Roles and responsibilities	25
Appendix 5 External Funding Opportunities	27

Vision

We will cut greenhouse gas emissions from all council operations to net zero by 2045 for Scope 1 and 2, and reduce Scope 3 emissions where we can. We will follow Scotland's carbon budgets and support a just transition for communities, businesses, and the environment.

Introduction

The Earth’s climate has always changed because of natural causes like volcanic eruptions and changes in the planet’s orbit. But since the Industrial Revolution (1760-1820), human activity has caused temperatures to rise much faster than ever before. This rapid change is now affecting both people and nature. We are seeing more extreme weather, pressure on food and water supplies, rising sea levels, and damage to ecosystems.

Climate change is one of nine “planetary boundaries” that are limits of key earth systems that we should not go beyond. Other boundaries include:- ocean acidification, stratospheric ozone depletion, atmospheric aerosol loading, biosphere integrity, land use, biogeochemical flows, freshwater use and chemical pollution (novel entities). By 2023, scientists had found that six had been breached: climate change, biosphere integrity, land use, freshwater and biogeochemical flows. These boundaries are linked, meaning that breaking one can make others worse. For example, climate change damages ecosystems, which then release more carbon, further warming the planet. Human activity is pushing the Earth toward changes that could become irreversible. Some climate impacts can no longer be avoided, so we must adapt quickly to reduce the risks.

Scotland has taken strong action on climate change and nature loss since the Climate Change (Scotland) Act 2009. Since our baseline year of 2015/16 North Lanarkshire Council has reduced its greenhouse gas emissions by 51.2% as at March 2025.

A Climate & Biodiversity Emergency

The council declared a Climate Emergency in June 2019 and signed the Edinburgh Declaration on Post-2020 Global Biodiversity Framework to support climate and biodiversity action. The council is committed to these declarations and aside from this **Path to Net Zero (2045)**, has other supporting strategies and plans as seen in **Appendix 3**. North Lanarkshire Council recognises that the wellbeing and prosperity of our communities depend on both reducing emissions and preparing for the changes already happening to our weather patterns. **North Lanarkshire’s Path to Net Zero (2045)** is how we intend to do this:

Figure 1 Public Bodies Climate Change Duties in a North Lanarkshire Context



The United Nations Sustainable Development Goals

In our action plan in **Appendix 1** you will see that our actions align with the UN’s 17 Sustainable Development Goals. We believe that through more sustainable actions we can help deliver a **just transition** to net zero.

Did you know?
A **just transition** refers to a fair and inclusive approach to transitioning towards a sustainable, low-carbon economy, ensuring that all communities and workers are supported throughout the process.

The United Nation’s Sustainable Development Goals (SDGs) are designed to work towards a fairer, balanced planet through:

- Tackling hunger and poverty, ensuring everyone’s basic needs are met
- Promoting health, education and equality
- Protecting the planet through conservation, the use of sustainable resources and tackling climate change
- Encouraging innovation, responsible consumption and production
- Promoting cooperation – globally, nationally and locally

Figure 2 Summary of UN's Sustainable Development Goals¹



¹ The content of this publication has not been approved by the United Nations and does not reflect the views of the United Nations or its officials or Member States

North Lanarkshire (Overview)

North Lanarkshire is located in west-central Scotland. It borders Glasgow City, East Dunbartonshire, Falkirk, Stirling, South Lanarkshire, and West Lothian. Covering approximately 470 square kilometres, a quarter of its land is urban however the area is rich in biodiversity, supporting diverse ecosystems and natural habitats. It is Scotland's fourth most populated local authority area with a population of 341,691, living within 154,382 households.

North Lanarkshire lies within the Glasgow City Region, and experiences similar issues due to climate change as neighbouring authorities. Climate change impacts greatest on the most vulnerable in our society and therefore impacts on issues such as poverty and social inequality. Our summers will become hotter, and our winters will have milder temperatures and will be wetter with less chance of snow. Our summers are traditionally a time where we use less energy however in the event of sustained or intense heat, we will become increasingly reliant on mechanical means to cool. Increased rainfall may lead to more frequent flooding impacting on homes and business. The following impacts of climate change have been witnessed more frequently in recent years.

Did you know?

That in North Lanarkshire there are:

- 🌳 9 Local Nature Reserves
- 🌳 3 Country Parks
- 🌳 380 Sites of Importance for Nature Conservation
- 🌳 3 Special Areas for Conservation
- 🌳 1 Special Protected Area
- 🌳 11 Sites of Special Scientific Interest
- 🌳 5 Scottish Wildlife Trust Reserves
- 🌳 1 Royal Society for the Protection of Birds Reserve



- Health impacts/Heatstroke
- Availability of certain foods and increased costs
- Travel disruption
- Emergency response situations
- Loss of power supply
- Landslides
- Flooding
- Loss of biodiversity
- Increased risk of fires
- Disruption to service delivery

The Plan for North Lanarkshire

The Plan for North Lanarkshire sets out a shared ambition to make North Lanarkshire a great place to live, learn, work, invest in, and visit.

The Plan brings together the work of the council and its partners, helping us focus on what matters most for local people. This work is overseen through a number of themed Boards: Brighter Futures, Digital North Lanarkshire, Invest in North Lanarkshire, One Service, Resilient People, Sustainable Futures, and Transforming Places.

Tackling climate change is one of our top priorities. We are working hard to:

- reduce greenhouse gas emissions,

- use more renewable energy in our buildings and homes, and
- protect our parks, greenspaces, rivers, and lochs.

Reaching our climate goals will take new ideas, investment, and strong partnerships with communities and organisations across the area.

Working together is essential. Through our Delivering for Communities approach, senior leaders work closely with local community boards, making sure residents’ voices guide local climate action. This joined-up way of working will help North Lanarkshire move towards its long-term aim of net-zero emissions.

For information on the council and its services refer to **Appendix 4**.

North Lanarkshire Emissions

Figure 3 North Lanarkshire Area-Wide Emissions

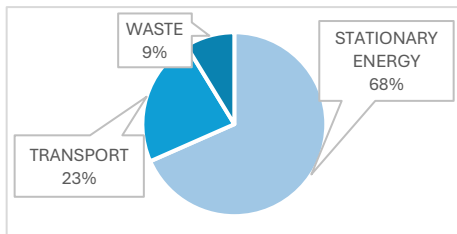


Figure 3 is a summary of the Scope 1 and 2 greenhouse gases emitted in North Lanarkshire

(explanation above). “Stationary energy” means the fuel used to heat and power buildings. It does not include fuel used for transport, like petrol or diesel. Most stationary energy is used in homes, and in North Lanarkshire, 49% of these emissions come from residential buildings. This is why it’s important that housing is energy efficient and moves away from gas and oil heating.

There are more than 10,000 businesses in the area, and all of them produce carbon emissions through their buildings, transport, and industrial or farming activities. For transport emissions, 97% come from vehicles on the road. To cut these emissions, more people need to use public transport. Council plans, such as the Active Travel Strategy, will help encourage people to change how they travel.

The carbon footprint data comes from the **Scottish Climate Intelligence Service**, which manages the ClimateView tool for all Scottish councils. The tool is still being developed in Scotland, so it currently reports only **Scope 1 and Scope 2 emissions**. In future, it is expected to include **Scope 3 emissions** as well. For the first time, this tool allows every Scottish local authority to report its area-wide emissions in a consistent way.

Did you know?

That Scope 1 & 2 emissions are those which we have more control over. We have focussed on tackling these types of emissions because this is where we can affect the most change:

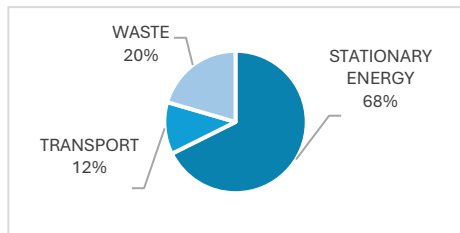
- Scope 1 – heating, fuel for transport and machinery, livestock and, fugitive and process emissions
- Scope 2 – Purchased: electricity, heat, steam, and cooling

Whereas Scope 3 we don’t have any control over but is related to our daily activities:

- Scope 3 - emissions from: producing the goods or materials you buy, suppliers, and waste disposal

The Council's Emissions

Figure 4 North Lanarkshire council's Emissions



The council's greenhouse gas emissions for the 2024/25 reporting year totalled **57,155** carbon tonnes equivalent (tCO₂e). Figure 4 is a summary of the greenhouse gas inventory for the council's own emissions. As it is not feasible to separate the data into council and non-council waste, we include all waste activities, and these are recorded as scope 3 emissions. For

further information on the council's emission sources see **Appendix 2** 'The council's Carbon Boundary'.

Climate Champions

The council's climate champion is appointed from the current serving elected members. Their role is to influence, encourage, and support positive change. The Sustainable Futures Board's Senior and Assistant Senior Responsible Officer act as climate champions too by ensuring the projects within the Programme of Work are delivered.

Strategic Climate Objectives

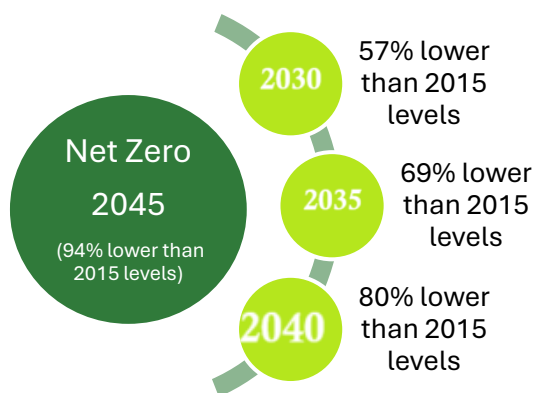
The council recognises that the need for urgent action is not solely to reduce the impact on humans. In Scotland climate change is contributing to the decline of native species like the Atlantic Puffin, Mountain Hare, Great Yellow Bumblebee, and Bluebell, while non-native species and emerging diseases (SARS, MERS, Ebola, COVID-19) may become more common.

Did you know?

That the UK has a 'watch list' of invasive species? The list to date includes 145 non-native plants and animals which have been assessed to have the ability to become invasive. These are species that pose a risk to biodiversity, ecosystems, human health, and the economy.

By delivering the actions contained within this **Path to Net Zero (2045)** we will:

Reduce emissions from council operations by 94% by 2045



As illustrated above, we will follow the Scottish Government Climate Budgets and the timeframe set. By doing so, we will continue to improve our response to reducing carbon emissions. In order to meet the **Path to Net Zero (2045)** milestones, we have set thematic targets. We have estimated that to

deliver net zero emissions will cost in excess of £5 billion. We recognise that it is going to be challenging to reduce our emissions beyond 2035 and so we also must now look at ways to store carbon. Trees, depending on site and species, can provide a natural carbon store (carbon sequestration). It takes between 31 to 46 trees to offset 1 tonne of carbon². We have estimated that for the council to achieve net zero emissions by 2045 we will need to plant between 217,775 and 323,150 trees, in addition to deliberate climate action to reduce our emissions.

The council does not have a direct responsibility for the overall emissions in North Lanarkshire however we will:

Support area-wide decarbonisation through leadership, partnerships, and encouraging climate friendly investment

We will do so through the implementation of some of the policies referred to earlier in this document such as the Local Plan, the Active Travel Strategy and the Local Housing Strategy as well as the Local Heat & Energy Efficiency Strategy.

Targets

In this edition of our **Path to Net Zero (2045)**, we have set yearly targets up to 2030. These targets are based on the Scottish Government’s goal for 2030, which is a 57% reduction in greenhouse gas emissions compared to the baseline year. Our baseline year is 2015/16. By 2030, we aim for our 5-year average emissions to be 50,342 tonnes of carbon equivalent. In future updates, we’ll set targets for 2035, 2040 and 2045 based on how well we perform over this 5-year period. Our action plan has been updated in developing the **Path to Net Zero (2045)**. (See **Appendix 1**).

Table 1 Thematic Annual Targets (2025-2030)

	Buildings	Transport	Waste	Total Emissions	% Reduction from Baseline	Average reduction at end of 5-year period
2025/26	35,811	6,777	11,718	54,306	54%	57%
2026/27	35,239	6,669	11,531	53,439	54%	
2027/28	33,442	6,329	10,943	50,714	57%	
2028/29	31,645	5,989	10,355	47,989	59%	
2029/30	29,848	5,649	9,767	45,263	61%	

² <https://8billiontrees.com/carbon-offsets-credits/how-many-trees-to-offset-1-ton-of-co2/>

Our Key Mission Statements by 2045

Building & Energy

We will:

- Switch to cleaner energy sources for heating in our existing buildings
- Increase our use of renewables, battery storage and consider carbon capture
- Through the Tackling Poverty Strategy and the Local Housing Strategy we will provide advice and support to local residents at risk of or in fuel poverty.

Transport

We will:

- Continue to develop our alternative vehicle fleet through targeted investment in light commercial vehicles, and explore alternative fuels and emerging technologies for heavy goods vehicles where feasible
- Continue to grow our internal and public electric vehicle charging network
- Promote the use of public transport and active travel.

Waste & Circular Economy

We will:

- Continue to improve our response to waste management and the circular economy.

Procurement

The Sustainable Procurement Duty (contained within the Procurement Reform (Scotland) Act 2014) requires the council to consider the environment during its procurement activities. Procurement therefore has an important role in the council's **Path to Net Zero (2045)**. The goods and services that the council buys all have climate impacts and so our procurement function is well equipped via the Scottish Government's Sustainable Procurement Tools to identify opportunities where we can reduce our emissions and encourage our supply chain to do the same.

Adaptation

Earlier in this document (within the North Lanarkshire (Overview) section) we mentioned the impacts we are experiencing due to a changing climate. In 2025 the UK experienced the hottest summer yet. The heavy rainfall and extreme winds of Storm Babet caused loss of life, travel disruption, disruption to water supplies, damage to infrastructure and flooding. Extreme conditions can impact on the public bodies such as emergency services and the council. The council and its partners plan for extreme events within its Contingency Planning which helps the continued delivery of services to residents such as during the 'Beast from the East' (snow and gale storm of 2018).

The Scottish National Adaptation Plan 2024-2029 is the pathway to becoming more resilient to the impacts of climate change. The council's primary focus is our response to flooding through our flood

Did you know?

On a car journey from **Glasgow to London**, petrol and diesel cars each produce roughly **90 kg CO₂e** — but an electric car emits only about **29 kg CO₂e**, making the same trip with **less than one-third of the emissions** (Source: Department for Transport Statistics)

Vehicle emissions can stay trapped in our atmosphere for 300-1000 years. (Source: Greenhouse Gas Protocol)

prevention planning. The council contributes to both Clyde and Loch Lomond and Forth Estuary Local Flood Risk Management Plans. A Strategic Flood Risk Assessment has been developed for North Lanarkshire, ranking areas in terms of flood risk to property. This document allows the council to prioritise actions to those areas at greatest risk of flooding.

Within the council's risk register, climate change has been identified as a key risk and has presently a number of key controls and actions whose focus is mitigation and climate resilience. As a member of Climate Ready Clyde the council contributed to the identification of risks and opportunities for the Glasgow region. The council continues to participate in the Climate Ready Clyde partnership, which will assist to further drive this agenda on a regional level via the delivery of Flagship Actions such as the Clyde Climate Forest.

There are many examples of adaptation action within North Lanarkshire such as Cumbernauld Living Landscape's Ravenswood Local Nature Reserve project delivered in partnership with the council, Scottish Wildlife Trust, The Conservation Volunteers, the James Hutton Institute and the housing association Sanctuary Scotland which not only saw improvement in local greenspace but wider benefits of improvements in mental health and the learning of new skills. We cannot afford to be too relaxed or stop paying attention to the importance of climate resilience. We will continue to improve our approach, and we will focus on the national objectives that we are able to contribute to.

Finance

The council's 5-year Capital Programme (2024/25-2028/29) totals £880,941,830 and this includes monies that will be spent on our buildings, greenspaces and fleet.

Table 2 Summary of North Lanarkshire Council's Capital Programme 2024-2029

Service Area	Total Allocations 2024/25-2028/29
Enterprise & Communities	£838,161,004
Chief Executive's	£23,154,937
Other	£19,625,889

We recognise there is a funding gap between what we currently have and what is needed to deliver our climate ambitions. To help close this gap, we actively pursue external funding from national programmes and other available sources. An example of external funding is below and a further summary of other sources available to the council, its partners and communities is contained in **Appendix 5**.

Scottish Public Sector Loan Scheme

Within this loan scheme, there is a fund known as 'The Scotland Recycling Fund'. Despite its name, it is nothing to do with recycling of waste. It is called a 'recycling fund' as the savings are continually reinvested i.e. recycled to be used again.

This fund is created using capital from the Scottish Government and matched by public bodies such as councils. It supports long-term investment in energy-efficient projects—like upgrades to lighting, heating, and insulation—with 100% interest-free repayable support. Savings generated from these projects are reinvested into further improvements, helping public bodies reduce carbon emissions year after year. The council has a fund of £2m which since 2017 has enabled the delivery of 43 energy efficiency projects with a total value of £3,605,418.16.

Planned reviews and updates

The **Path to Net Zero (2045)** is considered a 'live' document and therefore will be regularly reviewed to ensure that it is taking into account all that is current. The responsibility of maintaining this document will lie with the Climate & Energy Team supported by colleagues in other areas of the council.

An annual review will be carried out with the findings being reported to the Environment & Climate Change Committee. The annual review will include progress against the annual targets and highlight action taken.

Appendix 1 Action Plan

This action plan is not an exhaustive list of how we intend to achieve net zero emissions by 2045 as we will continue to add and review our actions in order to achieve our climate budgets.

Colour Key for Responsible Section:

Housing	Assets & Procurement	Community Operations	Place
---------	----------------------	----------------------	-------

Action & Description	Key Mission & Responsible Section	Start Year	End Year	Carbon Savings (tco2e)	Other Benefits	Link to Sustainable Development Goals (SDGs)	Impact	Baseline
Net Zero Housing Develop a route map for council stock to meet the new SHNZs (following publication of the new standard)	Buildings & Energy	2026	2028	314,700 tco2e	- Health - Financial - Fuel Poverty	7 (Affordable & Clean Energy), 11 (Sustainable Cities and Communities), 13 (Climate Action)	Area-wide	2,174,093,264 kwh
Heat in Buildings Scotland: Area Based Scheme (HiBS:ABS) Maximise the use of (HiBS:ABS) through encouraging homeowners and private landlords to participate	Buildings & Energy	2026	2028	The Scheme will improve thermal efficiency in participating homes reducing consumption and associated emissions	- Health - Financial - Fuel Poverty	7 (Affordable & Clean Energy), 11 (Sustainable Cities and Communities), 13 (Climate Action)	Area-wide	2,174,093,264 kwh
Salix Recycling Fund Projects Energy Efficiency projects chosen from a list of eligible technologies that have an acceptable payback period in terms of financial and carbon.	Buildings & Energy	2026	2030	485 tco2e	- Financial	13 (Climate Action)	Organisation	16,294 kwh

Action & Description	Key Mission & Responsible Section	Start Year	End Year	Carbon Savings (tco2e)	Other Benefits	Link to Sustainable Development Goals (SDGs)	Impact	Baseline
<p>Community Hub Projects</p> <p>Community hub projects energy (heat and power) consumption target to be less than 100Kw/m2/annum. The councils ACRs will set the requirements for targeted energy consumption</p>	Buildings & Energy	2022	2027	Carbon Savings will be dependent on the consumption of the original, replaced building	-Health -Financial -Community Facility	7 (Affordable & Clean Energy), 11 (Sustainable Cities and Communities), 13 (Climate Action)	Organisation	Consumption levels varies per site
<p>Non-Domestic Energy Efficiency</p> <p>Energy efficiency Improvements in the Corporate Estate. Works undertaken via NDEEF to reduce carbon emissions from buildings such as schools, offices, sport centres etc. Waste products arising from works will be recycled where appropriate. Proposed measures are lighting upgrades, BEMS optimisation, solar panels and reinstating existing CHP engines.</p>	Buildings & Energy	2023	2026	801 tco2e	-Health -Financial -Improved user experience	7 (Affordable & Clean Energy), 11 (Sustainable Cities and Communities), 13 (Climate Action)	Organisation	Electricity – 64,292,292 kwh Gas – 126,552,067 kwh
<p>Energy Policy</p> <p>Review the council's Energy Policy to ensure consumption reduction in</p>	Buildings & Energy	2026	2027	376 tco2e (Estimate)	- Financial	13 (Climate Action)	Organisation	Electricity – 64,292,292 kwh Gas – 126,552,067 kwh

Action & Description	Key Mission & Responsible Section	Start Year	End Year	Carbon Savings (tco2e)	Other Benefits	Link to Sustainable Development Goals (SDGs)	Impact	Baseline
our offices and public buildings is maximised								
Sustainable Procurement Ensure that the council meets its responsibilities in terms of sustainable procurement promoting 'reduce, recycle, reuse' including the disposal of items	Procurement	2014	2045	At present, we are unable to report carbon savings data for this action however will do so when there is a nationally agreed methodology to do so	- Financial - Reputation	12 (Responsible Consumption and Production)	Organisation	Not applicable
Enterprise Contract Ensure that the Enterprise Contract fully meets the requirement of Section 9 of the Procurement Reform (Scotland) Act 2014 by limiting unnecessary emissions, supporting a circular economy and where possible negating negative environmental impacts.	Procurement	2024	2036	-	-	13 (Climate Action)	Organisation	Not applicable
Staff Training Create an online carbon/ climate literacy training module: establish a basic training module for staff and elected members	Buildings & Energy, Waste, Transport, Procurement	2026	2027	2,500 tco2e	- Financial	12 (Responsible Consumption and Production), 13 (Climate Action)	Organisation	-

Action & Description	Key Mission & Responsible Section	Start Year	End Year	Carbon Savings (tco2e)	Other Benefits	Link to Sustainable Development Goals (SDGs)	Impact	Baseline
<p>Local Heat & Energy Efficiency</p> <p>Continue to implement and develop a LHEES for NL Lead the development of the Local Heat and Energy Efficiency Strategy's Delivery Plan</p>	Buildings & Energy Assets & Procurement	2023	2043	Carbon savings will be dependent on the number of buildings connected to any future heat network	-Financial -Health	7 (Affordable & Clean Energy), 13 (Climate Action)	Area-wide	Baseline figure dependent on location. Information on heat network zones is available within the LHEES
<p>Fabric Improvements of the School Estate</p> <p>To upgrade all schools above a 'B' (stock condition)</p>	Buildings & Energy Assets & Procurement	2025	2045	Carbon savings will be dependent on the work required to improve rating of school	-Financial -user experience	12 (Responsible Consumption and Production), 13 (Climate Action)	Organisation	Consumption levels varies per site
<p>Decarbonisation retrofit of the School Estate</p> <p>Decarbonisation suitable to individual site needs whilst ensuring affordability of utilities.</p>	Buildings & Energy Assets & Procurement	2025	2045	2,850	-Financial -user experience	7 (Affordable & Clean Energy), 11 (Sustainable Cities and Communities), 12 (Responsible Consumption and Production), 13 (Climate Action)	Organisation	Electricity – 64,292,292 kwh Gas – 126,552,067 kwh
<p>Decarbonisation of Fleet</p> <p>Utilisation of available technology to reduce fleet emissions.</p>	Transport	2025	2028	Carbon savings will be achieved however to what level is dependent on the alternative fuel	-Financial -Health	12 (Responsible Consumption and Production),	Organisation	Petrol - 359,066 litres Diesel - 1,845,793 litres

Action & Description	Key Mission & Responsible Section	Start Year	End Year	Carbon Savings (tco2e)	Other Benefits	Link to Sustainable Development Goals (SDGs)	Impact	Baseline
						13 (Climate Action)		
Kilsyth Flood Protection Scheme Construction of Kilsyth Flood Risk Reduction Scheme and conclusion of agreements with Scottish Canals prior to operation	Adaptation	2022	2027	Not applicable	- Health	3 (Good health and Wellbeing), 13 (Climate Action)	Area-wide	Not applicable
Active Travel Delivery Developing and implementing Active Travel routes in line with the council's Active Travel Strategy approved in August 2021 – Multiple Projects	Transport	2021	2031	986	- Financial - Health	3 (Good health and Wellbeing), 12 (Responsible Consumption and Production), 13 (Climate Action)	Area-wide	Main mode of travel 2024: Walking 12% Driving car or van 58% Passenger car or van 17% Bicycle less than 1% Bus 5% Taxi 1% Rail 4% Other 2%
New Build – Energy Efficiency Performance To increase the average Energy Performance Certificate rating for all NLC new build homes (3,229 properties), in terms of energy efficiency and environmental ratings.	Buildings & Energy	2025	2030	New build offers carbon avoidance rather than carbon savings	- Financial - Health - Fuel Poverty	3 (Good health and Wellbeing), 12 (Responsible Consumption and Production), 13 (Climate Action)	Area-wide	Baseline as at 2019/20 was Energy Efficiency (B, 85) and CO2 (B, 88)

Action & Description	Key Mission & Responsible Section	Start Year	End Year	Carbon Savings (tco2e)	Other Benefits	Link to Sustainable Development Goals (SDGs)	Impact	Baseline
<p>New Build - EV charging availability</p> <p>To increase the number of EV charging points available for use within council new build developments. This includes EV points to individual homes and EV pillars within parking courts. Baseline at 2020/21 was 4 charging points</p>	Transport	2021	2030	Carbon savings will be realised through the transition from petrol and diesel vehicles to Electric Vehicles	Improved User Experience	11 (Sustainable Cities and Communities), 13 (Climate Action)	Area-wide	-
<p>Optimise climate resources for SMEs</p> <p>Partnership working with Zero Waste Scotland and Energy Saving Trust. Optimise resources available for SMEs from Zero Waste Scotland and Energy Saving Trust in the form of information, expert help and practical assessments of business.</p>	Buildings & Energy, Procurement	2026	2030	Carbon savings will be dependent on the measures implemented by individual businesses	- Finance	8 (Decent Work and Economic Growth), 9 (Industry, Innovation and Infrastructure)	Area-wide	-

Action & Description	Key Mission & Responsible Section	Start Year	End Year	Carbon Savings (tco2e)	Other Benefits	Link to Sustainable Development Goals (SDGs)	Impact	Baseline
<p>Delivery of Regional Economic Strategy</p> <p>Glasgow City Region – Delivery of Regional Economic Strategy (RES) and action plan on climate change Contribution to Delivery of key Programmes in RES such as Clyde Mission, Housing retrofit, EV infrastructure, Green Business Support</p>	Buildings & Energy, Procurement, Transport	2021	2030	Carbon savings are dependent on the programme delivery within North Lanarkshire	<ul style="list-style-type: none"> - Fuel Poverty - Health - Improved User Experience -Finance 	3 (Good health and Wellbeing), 7 (Affordable & Clean Energy), 11 (Sustainable Cities and Communities), 13 (Climate Action)	Area-wide	-
<p>Delivery of Glasgow City Region's Sustainable Procurement Strategy Objective 5 - Mitigating the impact to Climate Change</p> <p>Maximise use of procurement to support transition to net zero emissions, reduce supply chain disruptions and work with supply chains to incentives climate resilience, mitigation efforts and build capacity</p>	Procurement	2021	2030	Carbon savings are dependent on minimising waste and the reuse of materials	<ul style="list-style-type: none"> - Finance 	8 (Decent Work and Economic Growth), 9 (Industry, Innovation and Infrastructure)	Area-wide	-

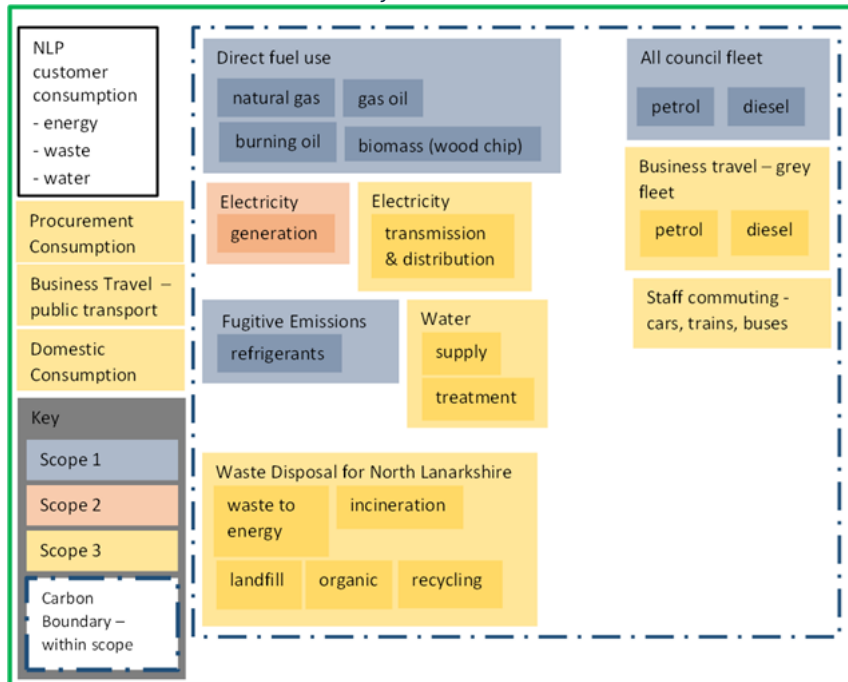
Action & Description	Key Mission & Responsible Section	Start Year	End Year	Carbon Savings (tco2e)	Other Benefits	Link to Sustainable Development Goals (SDGs)	Impact	Baseline
<p>NL City Deal Infrastructure Programme</p> <p>Application of Scottish Governments Sustainability Test and Carbon Management Guidance into Business cases, design, procurement, and implementation on whole life basis. Fully integrate Active Travel into proposals Support Sustainable travel and 20 min neighbourhoods</p>	Procurement, Transport	2021	2026	Carbon savings are dependent on the specific action taken	- Health - Air Quality	3 (Good health and Wellbeing), 11 (Sustainable Cities and Communities), 12 (Responsible Consumption and Production)	Area-wide	-
<p>Reduce embodied carbon potential</p> <p>Enabling the repurposing of historic buildings Reducing embodied carbon by repurposing (and improving the energy efficiency of) historic buildings, beginning with Kildonan Street, Coatbridge, Motherwell Old Town Hall and Motherwell YMCA</p>	Buildings & Energy, Waste	2025	2030	Preservation of embodied carbon of buildings retained	- Sustainability	11 (Sustainable Cities and Communities), 12 (Responsible Consumption and Production)	Area-wide	-

Action & Description	Key Mission & Responsible Section	Start Year	End Year	Carbon Savings (tco2e)	Other Benefits	Link to Sustainable Development Goals (SDGs)	Impact	Baseline
<p>Development of Local Development Plan</p> <p>Local Development Plan 2 Produce Local Development Plan 2 in line with the requirements of the Development Plan Regulations and in compliance with NP4, NPF4 and the National Planning Policy Handbook (therein) will be part of the Development Plan and therefore Planning Policy.</p>	Buildings & Energy	2022	2027	Not applicable	- protection of greenspace -sustainable development	11 (Sustainable Cities and Communities), 15 (Life on Land)	Area-wide	Not applicable

Appendix 2 The Council's Carbon Boundary

Carbon Boundaries are imaginary containers that capture all the emissions that organisations have a responsibility for. The council's Carbon Boundary was determined by looking at how our buildings are used, transport use for service delivery and waste management for North Lanarkshire. In line with guidance, we are currently looking at how we can capture our procurement emissions as well as our staff's use of public transport for business purposes.

Figure 5 North Lanarkshire Council's Carbon Boundary



Appendix 3 Supporting Strategies and Plans

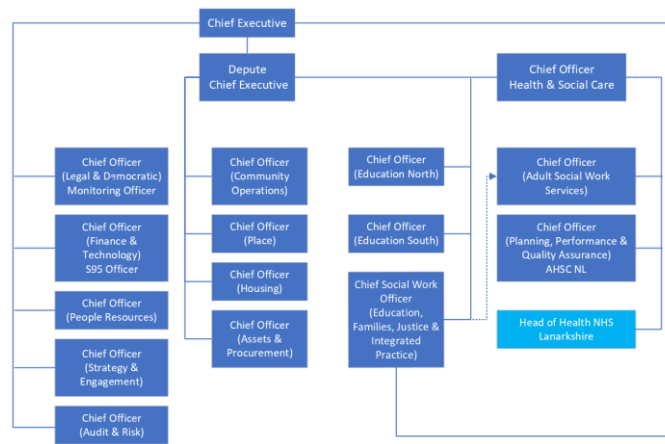
Document	Link
Air Quality Action Plan	https://www.northlanarkshire.gov.uk/pests-and-pollution/pollution/air-quality/air-quality-management-areas
Active Travel Access Strategy	https://www.northlanarkshire.gov.uk/your-council/council-strategies-and-plans/council-strategies/active-travel-strategy
Biodiversity Action Plan	https://www.northlanarkshire.gov.uk/leisure-parks-and-culture/countryside-and-parks/countryside-management-and-biodiversity/biodiversity/our-local-biodiversity
Contaminated Land Strategy	https://www.northlanarkshire.gov.uk/pests-and-pollution/pollution/contaminated-land
Core Paths Plan	https://www.northlanarkshire.gov.uk/leisure-parks-and-culture/countryside-and-parks/accessing-local-environment
Corporate Asset Management Plan	https://www.northlanarkshire.gov.uk/your-council/council-strategies-and-plans/council-strategies/corporate-asset-management-plan
Food Growing Strategy	https://www.northlanarkshire.gov.uk/leisure-parks-and-culture/countryside-and-parks/community-food-growing-and-allotments
Housing Asset Management Plan	https://www.northlanarkshire.gov.uk/sites/default/files/2023-04/Homes%20fit%20for%20the%20future%2C%20HAMP%202021-26.pdf
Local Development Plan	https://www.northlanarkshire.gov.uk/planning-and-building/development-plans/current-north-lanarkshire-local-development-plan
Local Heat & Energy Efficiency Strategy and Delivery Plan	https://www.northlanarkshire.gov.uk/your-council/council-strategies-and-plans/council-strategies/local-heat-and-energy-efficiency-strategy-and-delivery-plan
Local Housing Strategy	https://www.northlanarkshire.gov.uk/your-council/local-housing-strategy
Local Transport Strategy	New strategy expected 2026. https://www.northlanarkshire.gov.uk/your-council/council-strategies-and-plans/council-strategies/local-transport-strategy
Open Space Strategy	https://www.northlanarkshire.gov.uk/planning-and-building/development-plans/land-supply/open-space-strategy
Tackling Poverty Strategy 'Towards a Fairer North Lanarkshire'	https://www.northlanarkshire.gov.uk/your-community/tackling-poverty
Tree Risk Management Strategy	https://www.northlanarkshire.gov.uk/sites/default/files/2023-01/TRAM%20Strategy.pdf

Appendix 4 North Lanarkshire Council

North Lanarkshire council, established in 1996, is a single-tier authority and a member of the Glasgow City Region. It employs 13,400 staff (2024) and is responsible for education, social care, infrastructure, economic development, housing, environmental protection, waste management, and community planning, ensuring best value in service delivery.

The council manages approximately 1,000 operational assets worth £1.2bn, including schools, care homes, depots, offices, and surplus land. Its roads infrastructure spans 1,575 km of carriageway, 199 pedestrian crossings, 2,902 km of footpaths, 542 bridges, and over 61,241 street lighting columns. Additionally, it oversees a range of leisure and cultural facilities, including sports venues, community centres, museums, libraries, and theatres.

Our Services



The following is a summary of relevant activities carried out by our Services.

Education and Families Service continues to encourage school action on embedding sustainability via the curriculum for excellence. Topics such as litter, energy, water, waste management, healthy living and transport are tackled. Each year the schools participate in the Earth Hour Competition which encourages pupils to use their artistic or poetic creativity to produce works. A selection of these is chosen and are used to create short videos for social media, aired on the day of Earth Hour.

Enterprise and Communities, as one of the larger services within the organisation, has responsibility for: - regulatory and waste solutions; environmental assets; (corporate estate) assets and procurement delivering energy efficiency works via the NDEE and BEMS management; communities; housing (operations, repairs and projects); new build housing; and planning. The diverse range of functions offered by the service can significantly impact on the council’s carbon footprint. E.g. Electrification of the fleet; diversion of waste from landfill (the Clyde Valley Residual Waste Project) and recycling rates; development of environmental resources as possible climate resources; improving the energy efficiency of the built environment (domestic and non-domestic) such as EESSH and other Energy Efficient Scotland programmes. The council does not have a direct labour organisation rather it procures the services required to carry out repairs and major works to assets such as buildings, social housing and roads. The council does not currently report the consumption and emissions of its contractors which are associated with works carried on its behalf.

The **Health and Social Care** service report directly to the Joint Improvement Board. The JIB report annually as a separate entity for the purposes of complying with Public Bodies Climate Change Duties Annual Compliance Reporting.

The council is committed to ensuring North Lanarkshire is climate resilient and maximises its opportunities to adapt via its membership in Climate Ready Clyde. The value of other external relationships in maximising opportunities for knowledge and project development is realised through the council's continued involvement in other regional bodies such as the Glasgow and the Clyde Valley Strategic Development Planning Authority and other organisations such as the Sustainable Scotland Network and the Public Sector Climate Adaptation Network.

Roles and responsibilities

The council's committee structure was amended in 2022 and included the change of the Environment and Transportation committee to the Environment and Climate Change Committee. This signified the overt commitment to climate action and is evidence of the corporate awareness of the importance of this issue. Within the elected members' roles is that of the Climate Champion whose role is independent and allows to them to advocate for change and also to question and challenge where necessary.

The governance of climate change and the council's duties as a public body lies with the Sustainable Futures (SF) Board and is led by the Chief Officer (Assets & Procurement) as the Senior Responsible Officer and is supported by the Chief Officer (Community Operations). The Board's remit is to deliver key projects in its Programme of Work that will assist the council and the area of North Lanarkshire to become more resilient whilst reducing its emissions. The SF Board reports to relevant Committees e.g. progress on housing actions is reported to Housing Committee.

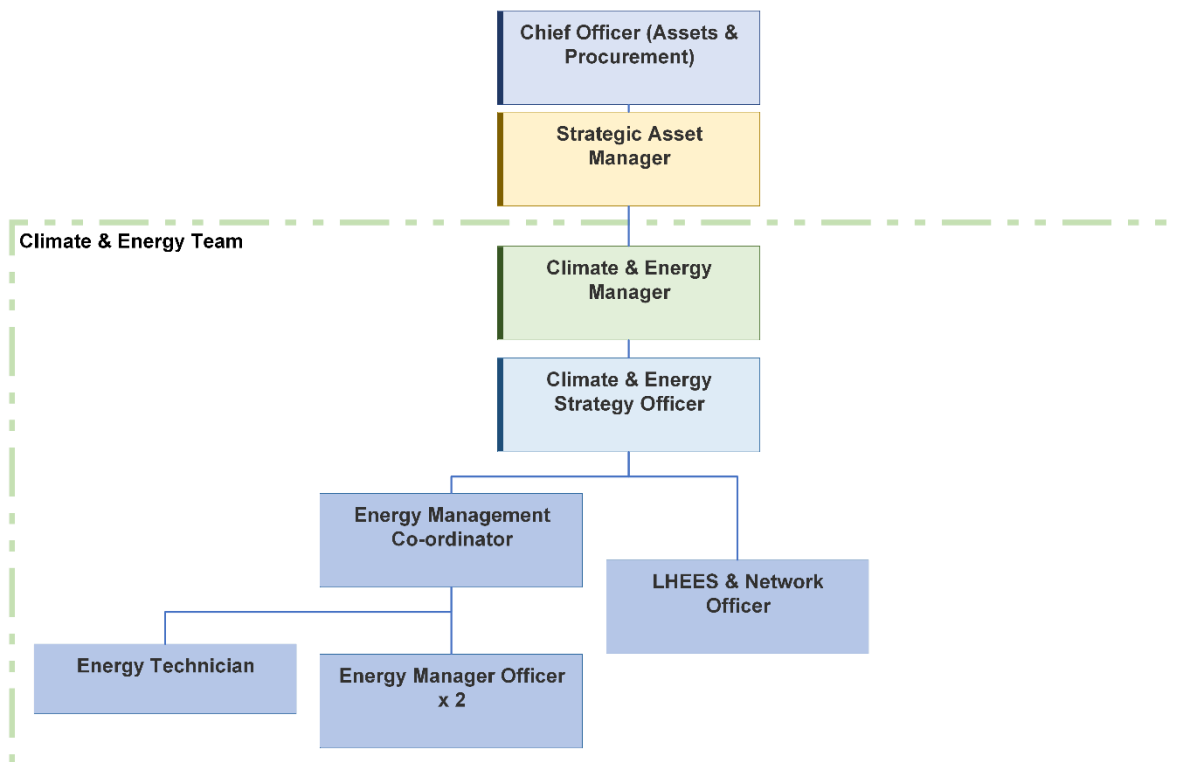
The Public Sector Duties Reporting Working Group assists with the completion of the annual reporting duty with the SF Board having oversight this. The annual report provides a progress update on the individual public body's journey towards net zero and how it contributes to the national adaptation strategy. It is reported in Cycle 1 to the Environment & Climate Change Committee having been submitted to the Scottish Government the previous November.

The Local Heat and Energy Efficiency Strategy Board oversees progress of the LHEES and its Delivery Plan. The Board has responsibility for approving the strategy's direction and any significant changes to it and the Delivery Plan. There is a crossover in terms of this Board and that of the SF Board as some of the actions contained within the Delivery Plan will contribute to the SF Programme of Work.

The Audit and Scrutiny Team are independent of the above activity and police the organisation's progress in terms of the Public Sector Duties. Updates on improvement actions are provided, and progress reports from the Chief Officer (Assets & Procurement) are submitted to the Panel on request. The Risk Team are also independent and ensure that regular consideration is given to effective climate action controls to guarantee that all climate risks are owned and managed throughout the organisation.

North Lanarkshire Partnership is the Community Planning Partnership which facilitates a collaboration within the Strategic Leadership Board of Chief Officers and Chairs of key partner agencies. A strategic aim of this collective is climate change and supports the community Local Outcome Improvement Plans where Environment was identified as priority by local communities.

Figure 6 Climate & Energy Team Staffing Structure



The Climate & Energy Team is based within the Asset Management Section of Assets & Procurement. The team has the overall responsibility for this document (**Path to Net Zero (2045)**), the LHEES and its Delivery Plan as well as the council’s Energy Policy including any updates or reviews. They are lead for the Corporate Climate Change risk, carrying out frequent reviews of controls and actions as well as co-ordinating the council’s response to all external consultations related to the Climate Change (Scotland) Act 2009. The Team is also part of the Estate Working Group whose members are all based within Assets & Procurement. The Working Group’s remit is to improve the condition of non-domestic buildings with a view to decarbonising as part of any relevant works taken.

Appendix 5 External Funding Opportunities

Finance Source	Finance Type	Applicants	Category	Description
<u>Electric Vehicle Infrastructure Fund</u>	Grant	Local authorities	Mitigation	£30M in funding for Scotland's local authorities to install public EV charging infrastructure. £4.73M has been allocated to the Glasgow City Region which includes North Lanarkshire.
<u>Public Sector Heat Decarbonisation Fund</u>	Grant	Local authorities, universities and arms-length organisations	Mitigation	Funding for public sector building heating decarbonisation and energy efficiency retrofit improvements. £11M in funding for the decarbonisation of public sector properties.
<u>Climate Ready Regions Funding</u>	Grant	Regional adaptation partnerships	Adaptation	Funding for Scottish regional adaptation partnerships to advance locally led solutions identified by partnership members.

Finance Source	Finance Type	Applicants	Category	Description
<u>SUEZ Communities Fund - Scotland - Grantscape</u>	Grant	Not-for-profits; community groups and local authorities	Nature-based	£200,000 in funding for applications of up to £40,000 of environmental improvement capital works at public amenities. Applications made for the public amenity, biodiversity or historic building funding category must be in the vicinity of a landfill site or transfer station.
<u>Clean Heating & Energy Efficiency Grants (Home Energy Scotland Grant & Loan)</u>	Grant	Homeowners	Mitigation	Grant funding for homeowners of up to £7,500 for energy efficiency improvements and £7,500 for clean heating systems. Houses in rural areas can receive up to an additional £1,500 for both category. Additional interest-free loans are also available.
<u>CARES Community Buildings Fund</u>	Grant	Charities, community groups or faith groups	Community	Funding for renewable technology installation in owned or leased buildings like heat pumps, PV panels and energy saving improvements.
<u>Rural and Island Infrastructure Fund</u>	Grant	Land-owning business or charge point operator	Mitigation	Funding to install public EV charging infrastructure, maximums are based on charger type. Applications must be made for land within a category 5-8 postcode under the Scottish 8-Fold Urban Rural Classification.

Finance Source	Finance Type	Applicants	Category	Description
<u>Climate Engagement Fund</u>	Grant	Local community or voluntary groups Community Trusts Community Planning Partnerships Colleges and Universities Cultural Organisations Science and Environmental Organisations	Community	£275,000 in funding for projects that help to build people's understanding of the climate emergency. £25K-80K per project funding allocations.
<u>Lanarkshire Climate Action Hub Micro-grants</u>	Grant	Community groups	Community	Various grants to spur community-led climate action within Lanarkshire. Awards range from £250 to £2,000 including the Climate Ready Places, Climate Change in Your Community, Active Travel Communities, Youth Reuse and Sharing, and the Climate Action grants.

Finance Source	Finance Type	Applicants	Category	Description
<u>Urban Forestry Challenge Fund</u>	Grant	Non-profits or constituted bodies	Nature-based	Funding for new tree planting, tree and woodland maintenance, urban forestry management research, education, skills development and engagement. Areas are selected based on the provided Tree Equity Score, prioritising areas of at least moderate priority. Projects can apply for between £2,000 up to £20,000 and over £20,000 up to £100,000.
<u>Scottish Central Government Energy Efficiency Grant Scheme</u>	Grant	Public Sector (limited)	Mitigation	Capital grant funding for heat decarbonisation and energy efficiency projects across the public sector, specifically to organisations with limited access to borrowing funds for this category of work.
<u>Scottish Public Sector Energy Efficiency Loan Scheme and Scotland Recycling Fund</u>	Loan	Public sector bodies	Mitigation	Financing for energy efficiency projects with a maximum 12-year payback at a cost of £305 per tonne of carbon dioxide equivalent.
<u>Heat Network Fund</u>	Grant	Public, private and third sector businesses and organisations	Mitigation	Funding for projects that support commercialisation or construction support for the legal definition of a district heat network or communal heat network. Maximum grant amount £1M.

Finance Source	Finance Type	Applicants	Category	Description
<u>National Lottery</u> <u>Climate Action Fund</u>	Grant	Registered charities, public body, school, college or university	All	Various opportunities through the Climate Action Fund Food Systems, Energy and Climate, Nature and Climate and Our Shared Future strands. Funding ranges greatly across categories from £50,000 to £7M