

GLENBOIG

LOCAL PLACE PLAN 2026

Glenboig Stronger Together

Today Tomorrow Always



Scottish Charity No: SC046147

- 3 FOREWORD
- 4 INTRODUCTION CRT PLACE
- 5 OUR COMMUNITY NOW - INCLUDING LPP BOUNDARY MAP
- 11 COMMUNITY CONSULTATION
- 12 PICTURE MY PLACE - RESULTS OF THE PLACE STANDARD ASSESSMENT
- 14 GLENBOIG LOCAL PLACE PLAN ALIGNS TO THE NATIONAL PLANNING FRAMEWORK 4
- 16 LOCAL PLACE PLAN MAP
- 18 LOCAL PLACE PLAN PROPOSITIONS
- 22 A VISION FOR SUSTAINABLE GROWTH
- 24 GLENBOIG LOCAL PLACE PLAN STATEMENT
- 25 OBJECTIVES ALIGNED WITH NPF4
- 27 WORKING TOGETHER FOR A BETTER PLACE FOR EVERYONE
- THEMES AND PRIORITIES FOR COMMUNITY ACTION:
- 28 THEME 1 | MOVEMENT
- 29 THEME 2 | SPACES
- 30 THEME 3 | RESOURCES
- 31 THEME 4 | CIVIC
- 32 THEME 5 | STEWARDSHIP
- 33 MAKING THE LINKS TO THE NORTH LANARKSHIRE LOIP
- 35 APPENDIX 1 - 6
- 44 OUR COMMUNITY VISION



We are pleased to present the first Local Place Plan prepared in Glenboig by the Community for the Community.

The Glenboig Local Place Plan is about one thing: our community shaping our future.

This Glenboig Local Place Plan which covers Glenboig Village, Annathill, Greenfoot, Ramoan and Marnoch, has been prepared by following the outcomes of the consultation and workshops that took place in 2024/25 supported by Coalfields Regeneration Trust (CRT).

CRT has since worked with Glenboig Development Trust and the Community to produce this local plan. Its production has been greatly assisted by the CRT Toolkit and Scotlands National Planning Framework (NPF4) mapping resource to gather the content for this plan supporting National ambitions. This includes climate resilience, wellbeing, place-based growth and revitalising derelict land, to investing in play spaces, enhancing local transport options and promoting community ownership — this plan is about enabling residents in Glenboig to shape and strengthen their place thus creating the right infrastructure to serve the growing community ensuring this plan works for us.

There's a lot to be proud of in our village — we are famous for our Fireclay Bricks and have a strong

sense of identity, a deep connection to our mining history and people who care. This is why the plan looks at how we protect what makes Glenboig special, whilst also welcoming ideas which will be set out in this new Place Plan.

We know Glenboig is growing, and that brings both challenges and opportunities whether making it safer to walk to school, protecting Glenboig Village park and the Community play area, Garnqueen Loch, our woodlands and green spaces, we can ensure families can socialise, play, shop, and enjoy life locally.

Working together with the community our research and engagement has played a vital role in shaping our priorities and building Community wealth. It tells us Glenboig and Villages enjoy lower crime and higher reported wellbeing than surrounding areas.

Our shared vision is to ensure Glenboig and Villages continue to be a vibrant, thriving place to live — for current and future generations.

“ Whatever the problem, community is the answer.”

MARGARET WHEATLEY
margaretwheatley.com

CRT Place is a place based approach to support the regeneration and creation of sustainable and resilient communities in Scotland’s former coal mining communities.

We are using a range of methods to capture people’s views of where they live, as it is now and how they see the future in their local community. This approach promotes dialogue and cooperation between community members, partners and outside agencies. Any type of community led plan is always a work in progress, however it provides concrete steps to help shape local communities going forward. The aim of this is that future generations can thrive in changing times so that no one is left behind.

We are pleased to present one of the first Local Place Plans to be prepared in North Lanarkshire. This is the outcome of hard work and commitment by the Glenboig Development Trust alongside their community and all those with an interest in the future of Glenboig.

The Glenboig Local Place Plan has been prepared by following the outcomes of the consultation and workshops that took place during 2024/25.

The CRT Place engagement toolkit allowed us to reach out to the local community and the Place Standard assessment tool has been a key driver behind the content of this work.

We have worked closely with the Fourth National Planning Framework (NPF4) and used it as our guide when framing our Local Place Plan.

Thanks go to Green Map System for their support in providing their resources to help us make the spatial mapping as accessible as possible using their adapted icons to identify policy and place.

The Glenboig Local Place Plan sets out a future vision for how our community could be improved and the actions required to help achieve this.

The local community have also identified community action priorities that they want to see happen. These are set out under the five themes of the Improvement Service ‘Place and Wellbeing Outcomes’ designed to improve Scotland’s wellbeing and reduce inequality and work toward Net Zero.

The community working together has been the key to success so far and continues to act as a benchmark for future engagement in planning and community planning in Glenboig.

Background

Glenboig community members produced the first Glenboig Community Action Plan that ran from 2015 -2020 with support from Coalfields Regeneration Trust.

The Glenboig Steering Group have been working with CRT to organise a community wide engagement with the aim of producing this Glenboig Local Place Plan designed to deliver the spatial vision and community action priorities for the area.

The Steering group, during the process of creating this local place plan, drew support from members of Glenboig Development Trust.

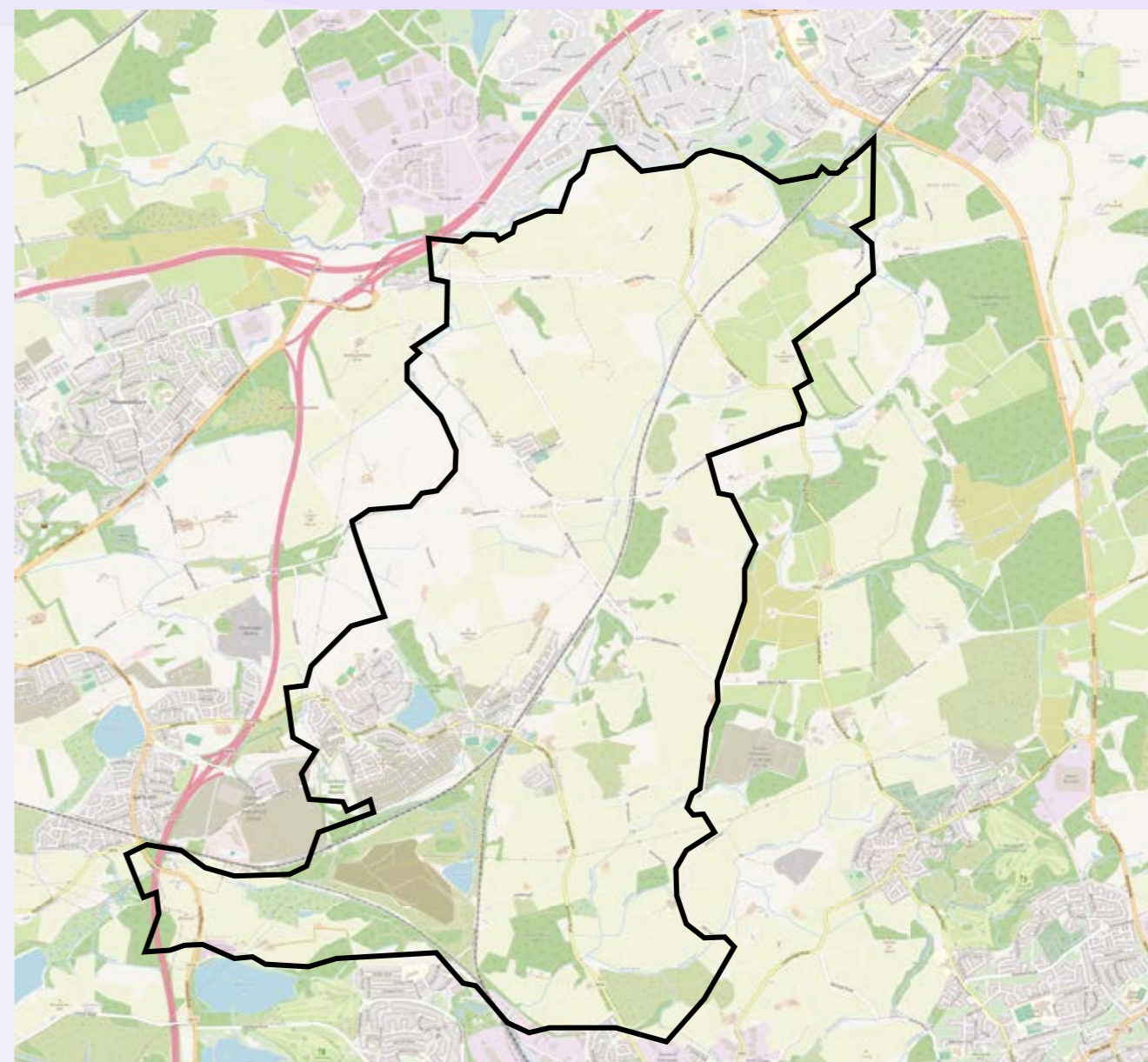


Figure 1: Glenboig Community Council Boundary and is also the boundary for the Local Place Plan

www.openstreetmap.org/copyright

Location

Glenboig is a village in North Lanarkshire, situated northeast of Glasgow and close to Coatbridge. It lies on the edge of the Glasgow conurbation, with excellent transport links via road and rail to the wider central belt.

Historically, Glenboig grew around the fireclay and brickmaking industries in the 19th and early 20th centuries, with its bricks renowned for their use in furnaces and foundries worldwide. The village also has a rich cultural history shaped by its industrial heritage and close-knit mining community. Today, Glenboig retains a strong sense of local identity in the midst of the pressures and impact of significant housing developments underway within its boundaries.

Population

There are

3,132

people in Glenboig LPP Boundary. This is smaller than the population of **North Lanarkshire**

340,930

and smaller than the population of **Scotland**

5,447,700



Males:

50.57%



Females:

49.43%



Age 0-15 years

21.56%



Age 65+

13.43%



Age 16-64

65.01%

Housing

The table provides both the proportion of the area's population and the overall count for different housing tenures. The tenure of a household is derived from the response to the 2022 Census question asking whether the household owns or rents its accommodation and, if rented, from the response to the question asking who is the landlord.

Source: Census 2022

Housing Tenure

Indicator	Glenboig LPP Boundary
Owned Outright	29.81%
Owned: With Mortgage / Loan	42.71%
Shared Ownership	0.17%
Shared Equity	0.75%
Private Rented: Landlord or Letting Agency	4.00%
Private Rented: Other	0.17%
Living Rent Free	1.50%

Health and Care

The table below shows data from Census 2022 on the total number and proportion of residents within each response category from a self-assessment of general health.

1.92% of people in Glenboig LPP Boundary have very bad health. This is lower than the proportion in North Lanarkshire (**2.22%**) and higher than the proportion in Scotland (**1.64%**). In Glenboig LPP Boundary, the proportion of people disabled under the Equality Act with their day-to-day activities limited a lot is **11.36%**. This is lower than the proportion in North Lanarkshire (**13.21%**) and higher than the proportion in Scotland (**10.76%**).

Self-Reported General Health

Indicator	Glenboig LPP Boundary	North Lanarkshire	Scotland
Very Good	52.18%	45.99%	47.97%
Good	26.68%	29.50%	30.87%
Fair	14.15%	15.52%	14.20%
Bad	5.88%	6.76%	5.30%
Very Bad	1.92%	2.22%	1.64%

Source: Census 2022

Education

There are 205 people in Glenboig LPP Boundary with an apprenticeship as their highest qualification, **8.72%** of all people aged over 16. This is higher than average for North Lanarkshire (**8.4%**) and higher than the average for Scotland (**7.65%**).

Level of Qualification

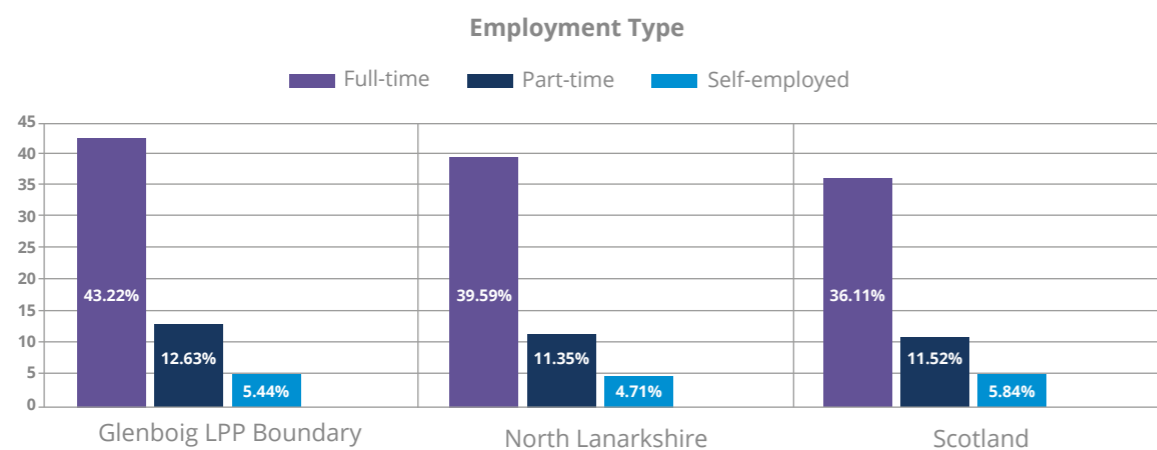
Indicator	Glenboig LPP Boundary	North Lanarkshire	Scotland
No Qualifications	19.48%	21.02%	16.66%
Lower School	20.80%	21.57%	18.88%
Upper School	11.23%	10.80%	11.16%
Further Education	15.36%	15.12%	13.25%
Apprenticeship	8.72%	8.40%	7.65%
Degree	23.39%	23.12%	32.43%

Employment and Benefits

In Glenboig LPP Boundary, the proportion of those in full-time roles is **43.22%**, which is higher than North Lanarkshire (**39.59%**) and higher than Scotland (**36.11%**).

Employment Type

The chart below shows the percentage of part-time, full-time and self-employed people in Glenboig LPP Boundary, North Lanarkshire and Scotland. Figures reflect responses to the 2022 Census economic activity question and are presented as a proportion of people aged 16+ in each respective area. Working part-time is defined as working 30 hours or less a week, full-time as working 31 hours or more a week, and being self-employed relates to the person's main job in the week before Census or, if not working in the week before Census, their last main job.



Unemployment

In Glenboig LPP Boundary, **1.77%** of the working age population are claiming unemployment benefits (Jobseekers Allowance and out of work UC claimants). This is lower than the proportion in North Lanarkshire (**3.36%**) and lower than the proportion in Scotland (**3.25%**).

Education and Training

Glenboig currently has 2 primary schools and 1 nursery all sharing one campus; Glenboig Primary, school roll 135 and Our Lady & St Joseph's Primary, school roll 143. OLSJ Nursery – 40/40 mixed model.

North Lanarkshire Council has proposed a new build/decoupling due to pressure on shared spaces and rising rolls. Children progressing to senior education are bussed to Coatbridge to a choice of Secondary schools.

On the Glenboig shared campus, the SIMD picture is broadly "mid-deprivation": Glenboig Primary's latest inspection notes 28% of pupils from SIMD deciles 3–5, with the remainder in 6–8 (i.e., none from the most deprived deciles 1–2) — a profile that typically calls for targeted, family-level supports rather

than area-wide deprivation interventions; for Our Lady & St Joseph's Primary (and its nursery class), Education Scotland has no current published SIMD breakdown, but given the schools share the same semi-rural catchment serving Glenboig/Annathill, the intake is expected to be similar (predominantly mid-deciles).

Glenboig Development Trust (GDT) are involved with a variety of training and educational elements including visits from primary schools for e.g. Climate Connections Event, Intergenerational experiences, Cost of Living and Place Plan community events.

A formal partnership with Buchanan High School enables work experience opportunities for additional support needs students throughout the various services offered by Glenboig Life Centre. This opportunity is also extended to other High

Schools in the local area enabling young people to prepare for work before leaving school.

In addition to this GDT have 2 garden teams. The Senior Care - Community Garden / Handyman Team is responsible for delivering a unique all year round garden and winter support service to older and vulnerable people, ensuring a connection to the community.

The aim of this team is to ensure that their well-maintained property does not draw any unwelcome attention ie bogus callers, allowing these community members to have an added level of security and safety.

The second garden team operates from the local Community Garden. (see Environment section)

Both of these garden projects offer young people and ASN students the opportunity to learn a trade, work as part of a team and build confidence. GDT endeavour to include the whole community of Glenboig in all projects and services.

Social and Community

Glenboig Life Centre is a community-owned facility run by Glenboig Development Trust. It offers something for everyone, from birth to older age, including children and young people's services, senior care projects, a community post office, a community café, and a meal delivery service providing hot meals six days a week for older and vulnerable people. Employability and work experience opportunities are also available.

See Annex1 for a full list of services and classes available at the Glenboig Life Centre.

Glenboig is home to the football club Glenboig United (GU) who play in the CSFA – Central Scotland Football Association. GU train and play at the fondly named Joes Park, where they provide football training for children from 4 – 14 yrs.

The Carrick Park – Amateur football training ground – Located at Carrick Place, Glenboig.

We also enjoy The Glenboig Book Club run by locals established 2023. Meet-ups are Friday evenings for book chat, homemade scones a cuppa and a catch up.

Tower Circuit Training - the local Community Fitness space available in the Glenboig Life Centre that marries up with the outdoor gym situated in the Glenboig Village Park. Both of these were requested by the community when GDT were designing sustainable fitness facilities for all to use and enjoy.

Community Transport is available via the Glenboig Life Centre. Within the GDT fleet there are a variety of vehicles available including a wheelchair accessible bus and car. This service provides primary and secondary school children transfers from home to school – return journeys. This transport facility also collects Life Centre users to and from activities at the Life Centre, hospital appointments and community transport hires and more. Any constituted community group can access this service.

Glenboig enjoys a variety of annual events including Burns Supper, The Seniors - Spring Fling, Easter Bunny Family Event, Gala Day, the Children's Summer Activity Programme, Scarecrow Competition, Halloween night, Remembrance tribute at the Cenotaph, St Andrews celebration, Santa Sleigh- around the village event, Christmas Fayre and Christmas lights switch on celebration.

We enjoy the stunning photographs of our local scenery and wildlife captured all year round by members of the Glenboig Photography Group and local residents and shared via Glenboig Photography Facebook page.



Environment

Glenboig Village Park, created and designed by the community, this transforms industrial space for people and nature (2004)

Glenboig Village Play park (2009) was designed by all the community

Glenboig Community Garden is an oasis of bright colours of fruit, vegetables and flowers brought to life from an old derelict piece of land bequeathed by James Chapman for the benefit of the community and maintained by Glenboig Development Trust. The hard work was carried out by the GDT Environmental Officer and many volunteers from the community. The Garden is now an integral part of the community. Local people continue to support it by purchasing hanging baskets, fruit, vegetables and flowers and giving their valuable time. Villagers often enjoy spending quality peaceful moments in this beautiful spot in the village.

Glenboig remains beautiful and safe with the help of the Senior Care - Community Garden / Handyman Team. They are out cutting grass, weeding and maintaining the gardens all during the summer season. As winter comes this team switches to providing a winter/snow response service to help with clearing snow and gritting paths for the elderly, vulnerable and isolated. This ensures that their little piece of nature is as beautiful, climate friendly and as safe as the rest of the village.

Glenboig enjoys the nearby woods / nature reserve which can be found by following Ducks Walk path from Main Street at Glenburn Gardens.

Public Transport

The nearest train station is Gartcosh where a park and ride is available. This gives access to Glasgow, Cumbernauld and Falkirk.

Road access by the M80, M8, M74 allowing access east to Edinburgh, west to Glasgow, north and south.

Bus services to Coatbridge, Glasgow Fort and Parkhead Forge. For up to date details:

■ United Coaches

(Glenboig - Coatbridge) Traveline Scotland operator page
SPT timetable: Service 3. Traveline Scotland+1

■ ARG Travel

(Glenboig - Glasgow Fort; Glenboig/Coatbridge evenings) Operator site **SPT timetable:** Service 310
SPT timetable: Services 132/132A. SPT+1

■ First Bus

Greater Glasgow (Parkhead Forge / Glasgow Fort area services)
Timetables hub • Route 60/60A PDF (serves Parkhead Forge). First Bus+1

Heritage

Glenboig is world famous for its Fireclay Brickworks. These included Hurl's Works and Glenboig Union Fireclay Co. who owned Starworks and Old Works, in which the community still have an enormous sense of pride. GUFC Co. became a global leader and bricks were exported around the world for use in furnaces, and industrial construction. Bricks are still found in Canada, Alaska, USA, Philippines, Australia, Hong Kong and the Caribbean as well as shipwreck sites in Hawaii and Sardinia. To remember our valuable heritage, memorial bricks can be engraved and placed on the wall in the Glenboig Life Centre.

This has been so important for people of the community as a way to remember family, friends or occasions and even pets.

www.justgiving.com/campaign/GDT

Gartcosh Strip Mill—built from 1959 and opened as a cold-reduction mill in 1962—closed on 31 March 1986, by which time it employed around 700 local workers."

A rich coal mining history is also part of Glenboig industrial heritage. During the operational years almost every family would have had a connection to the mines including Bedley Pit. The people of Glenboig are proud to tell stories from the past which has in part, been captured by The Memories of the Seven Lochs project with Dr Sue Morrison, <https://sevenlochsmemories.co.uk> Keeping Glenboig history alive.

The Seven Lochs Heritage group has documented our history using illustrated panels on display at the Life Centre.



Gathering Everyone's Views

A series of community engagement events and on line surveys has enabled us to gather people's views to help inform this action plan.

Consultations included:

Glenboig 3 Wishes Campaign - this took the form of a postcard with an on-line survey option as well as being available at many of the local events.



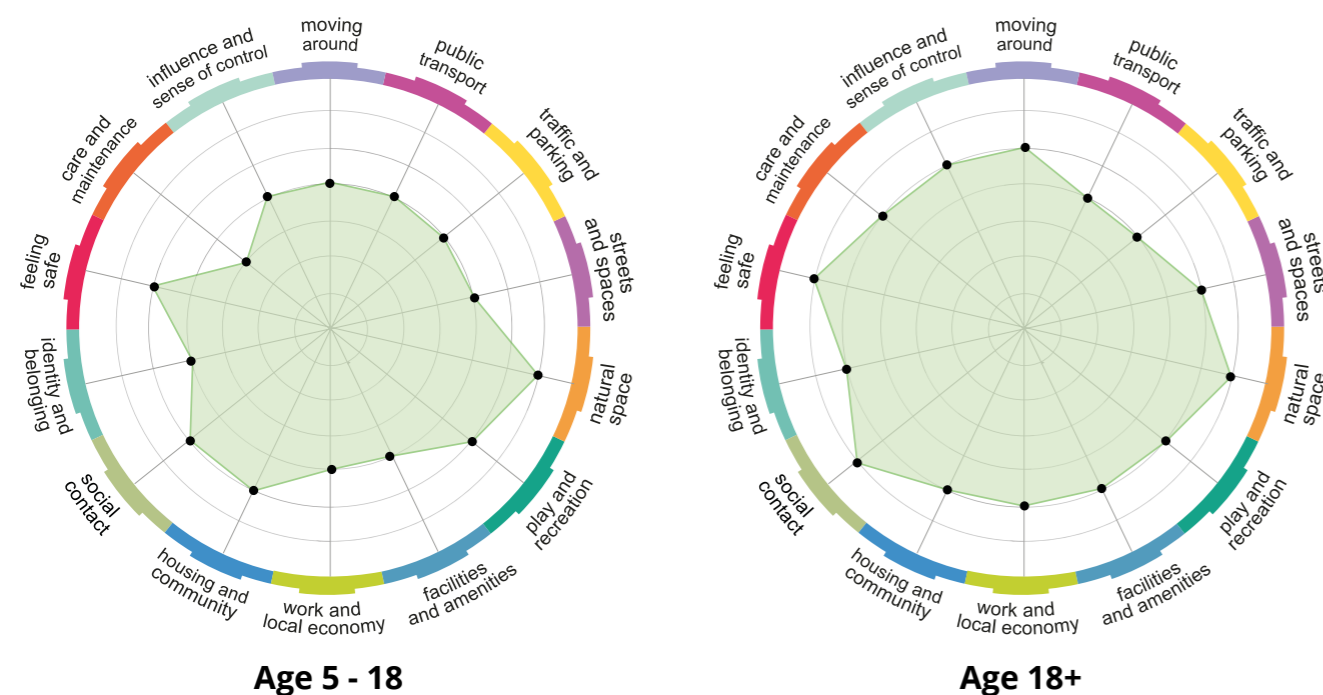
The 3 Wishes campaign highlighted the community's aspirations around improvements relating to infrastructure, amenities, activities, and recreational opportunities as well as community safety.

Results of the Place Standard Assessment

Community Engagement Using the Place Standard Assessment Tool

A week long consultation using the Place Standard Tool took place at the Life Centre Café Feb 2025. Each class from the Primary Campus was also represented at facilitated workshops. Alongside this was a community mapping table with a facilitated mapping event concluding the week long consultation with 24 participants bringing their local knowledge and life experience.

60 Place Standard Assessments were completed



The graphs show the strong and the weak areas, the higher the score plotted the better the service or provision. This gives a good indicator of where improvements need to be made. These graphs show an average score from the 2 place standard age groups.

Strengths

Natural space stands out as a strong asset, valued equally by both adults and young people. Social interaction, feeling safe, and housing & community also score above average, especially from adult perspectives.

Weaknesses

Care & maintenance is the lowest-rated area for young people. Public transport and traffic and parking also score lower, highlighting shared challenges across age groups.

Adults vs Youth Comparison

Adults consistently score slightly higher across most themes, though both groups agree on key strengths (natural space, play and recreation) and challenges (transport, parking, facilities). The largest gap is in care and maintenance, where youth rate the area significantly lower.

Glenboig Community Place Standard Scores: Adults and Youth

This table compares the Place Standard scores between Adults (18+) and Children & Young People (Primary-17) in Glenboig.

Scores range from **1 (very poor)** to **7 (very good)**. Key observations highlight differences and similarities.

Theme	Adults 18+	Youth 5-17	Key Observation
Moving around	5	4	Adults find movement easier; youth face more barriers.
Public transport	4	4	Shared weakness – transport provision rated low.
Traffic and parking	4	4	Shared issue for both groups – poor satisfaction.
Streets and spaces	5	4	Adults rate streets positively; youth less so.
Natural space	6	6	Strongest shared strength – valued equally.
Play and recreation	5	5	Adequate provision, but not a standout strength.
Facilities & amenities	5	4	Adults more positive; youth feel limited provision.
Work & local economy	5	4	Adults moderately positive; youth see fewer opportunities.
Housing & community	5	5	Steady but not strong – average satisfaction.
Social interaction	6	5	Adults report strong community ties; youth moderate.
Identity & belonging	5	4	Adults feel stronger sense of belonging than youth.
Feeling safe	6	5	Adults feel very safe; youth slightly less so.
Care & maintenance	5	3	Major concern for youth – largest score gap.
Influence & control	5	4	Adults feel somewhat involved; youth less so.

GLENBOIG LOCAL PLACE PLAN ALIGNS TO THE NATIONAL PLANNING FRAMEWORK 4

14

“ The world is changing, and so are Scotland's places. This strategy sets out how we will work together in the coming years to improve people's lives by making sustainable, liveable and productive places. This will play a key role in delivering on the United Nations Sustainable Development Goals, as well as our national outcomes. We have substantially re-worked the Framework's 'National Spatial Strategy', which sets out how our approach to planning and development will help achieve a net zero, sustainable Scotland by 2045.”

STATEMENT BY MINISTER FOR PUBLIC FINANCE, PLANNING AND COMMUNITY WEALTH TOM ARTHUR ON THE FOURTH NATIONAL PLANNING FRAMEWORK (NPF4) ON 8TH NOVEMBER 2022

Throughout the Local Place Plan development and consultation phases regard was made to the following plans and policies:

www.northlanarkshire.gov.uk

www.northlanarkshire.gov.uk/sites/default/files/2020-09/Gartcosh%20%26%20Glenboig%20CGA%20Concept%20Statement.pdf

www.northlanarkshire.gov.uk/planning-and-building/development-plans/current-north-lanarkshire-local-development-plan

www.northlanarkshire.gov.uk/your-community/working-communities/your-area/local-outcome-improvement-plans-loips

The Fourth National Planning Framework (NPF4) was consulted throughout the same period.

www.gov.scot/publications/national-planning-framework-4

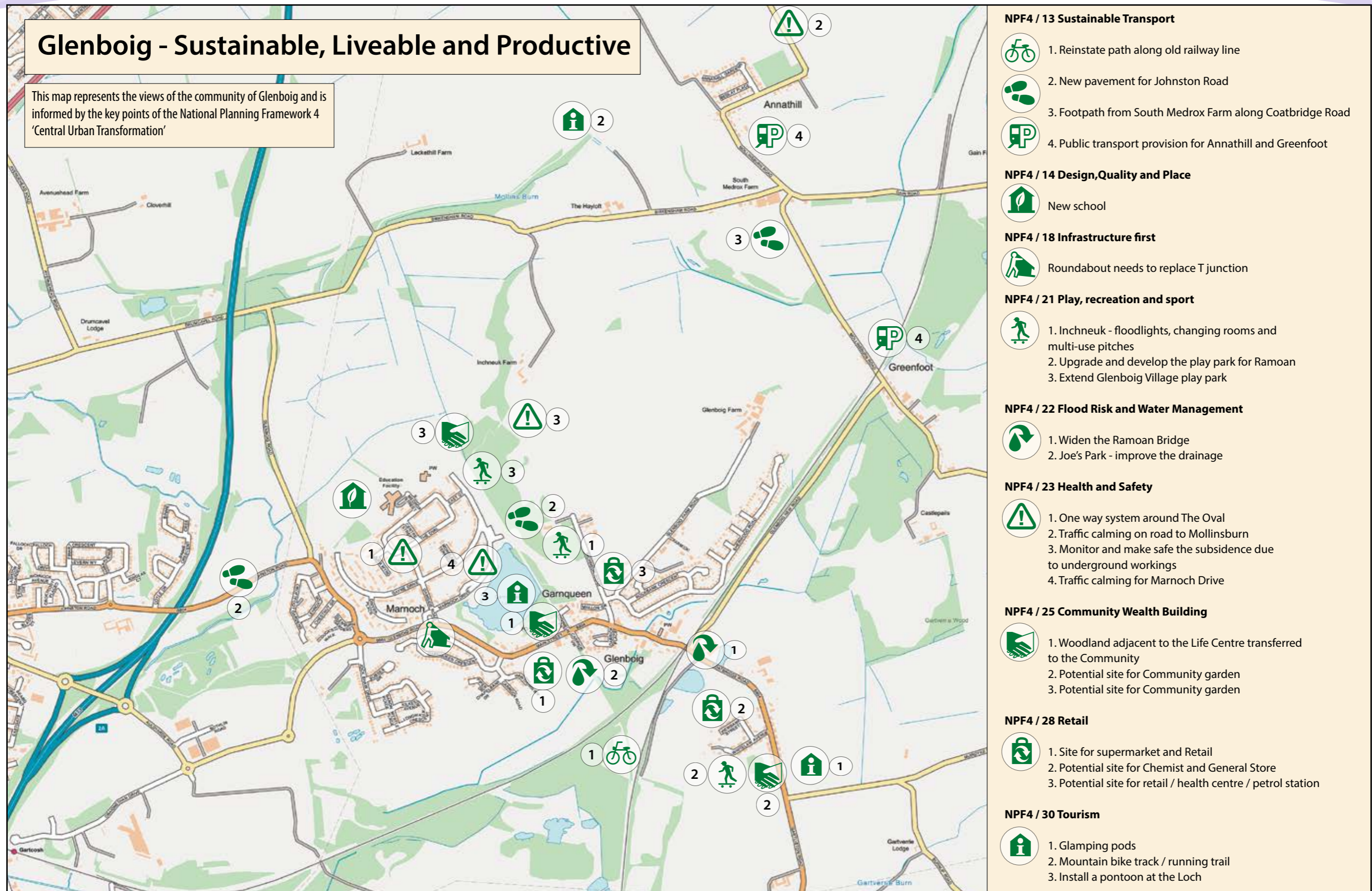
CRT Local Place Plan Maps use icons to represent NPF4 policies and this helps fulfil a requirement of Local Place Plans to show the links between local propositions and National planning policies.

Map themes are in line with NPF4 and include Sustainable, Productive & Liveable.



15





The icons on the map show the locations highlighted by local people that align with the latest Scottish Government planning policies, commonly known as NPF4. Each proposition put forward on this map has further details and information outlined in the pages that follow.

The 33 NPF4 policies sit within the themes Sustainable Places – Liveable Places – Productive Places. How to read the icons on this LPP map: NPF4/13 represents NPF4 Policy 13 Sustainable Transport.

Propositions for consideration in the North Lanarkshire Local Development Plan including links to NPF4 policies

NPF4 / 9 – Vacant or Derelict Land

Proposition:

Proposed Community Garden

Protect the old school ground in Ramoan –the old Glenboig Primary, by designing and developing an environmental project to include a new play area within this community garden.

Supporting Statement:

This proposal contributes to the regeneration of unused land, aligning with NPF4 Policy 9 by turning underutilised or derelict spaces into active community assets.

Related North Lanarkshire LDP Policies: PROM LOC1, EDQ2

NPF4 / 13 – Sustainable Transport

Proposition:

1. Reinstate path along old railway line. Upgrade and maintain an accessible path to Townhead along the old railway line connecting to Drumpellier Park, thus linking into the Seven Lochs Project.

Supporting Statement:

This proposition calls for local accessibility and sustainable travel options, directly supporting NPF4 Policy 13 which promotes active and low-carbon transport.

Related North Lanarkshire LDP Policies: PROM ID3, EDQ2

NPF4 / 13 – Sustainable Transport

Proposition:

2. New pavement for Johnston Road. Extend existing footpath along Johnston Road from Croft Rise to the motorway bridge at Gartcosh.

Supporting Statement:

This proposition calls for local accessibility and sustainable travel options, directly supporting NPF4 Policy 13 which promotes active and low-carbon transport.

Related North Lanarkshire LDP Policies: PROM ID3, EDQ2

NPF4 / 13 – Sustainable Transport

Proposition:

3. Footpath from South Medrox Farm along Coatbridge Road.

Supporting Statement:

This proposition calls for local accessibility and sustainable travel options, directly supporting NPF4 Policy 13 which promotes active and low-carbon transport.

Related North Lanarkshire LDP Policies: PROM ID3, EDQ2

NPF4 / 13 – Sustainable Transport

Proposition:

4. Public transport provision for Annathill. Address isolation by providing local accessible transport increasing connectivity.

Supporting Statement:

This proposition calls for local accessibility and sustainable travel options, directly supporting NPF4 Policy 13 which promotes active and low-carbon transport.

Related North Lanarkshire LDP Policies: PROM ID3

NPF4 / 13 – Sustainable Transport

Proposition:

5. Public transport provision for Greenfoot. Address isolation by providing local accessible transport increasing connectivity.

Supporting Statement:

This proposition calls for local accessibility and sustainable travel options, directly supporting NPF4 Policy 13 which promotes active and low-carbon transport.

Related North Lanarkshire LDP Policies: PROM ID3

NPF4 / 18 – Design, Quality and Place

Proposition:

New school. Accommodate the growing population by providing a new Primary School in Glenboig.

Supporting Statement:

The proposal supports the creation of high-quality, inclusive environments, consistent with NPF4 Policy 14's focus on placemaking and community wellbeing.

Related North Lanarkshire LDP Policies: EDQ2, RTC3

NPF4 / 18 – Infrastructure First

Proposition:

Roundabout needs to replace T junction see Annexe 2. Install new roundabout where Marnoch Drive meets Main St Glenboig, to relieve congestion at busy times, focus on safety and improve the transport infrastructure.

Supporting Statement:

This action reflects the principles of NPF4 Policy 18 by prioritising essential infrastructure to support safer routes.

Related North Lanarkshire LDP Policies: DSP3, EDQ2

NPF4 / 21 – Play, Recreation and Sport

Proposition:

1. Inchneuk - floodlights, changing rooms and Multi-use pitches. Increase recreation facilities by designing, developing and installing floodlights, changing rooms and multi-use pitches on Inchneuk / derelict land

Supporting Statement:

This initiative supports NPF4 Policy 21 by encouraging active lifestyles and inclusive access to recreation facilities for all age groups.

Related North Lanarkshire LDP Policies: PP5, RTC3

NPF4 / 21 – Play, Recreation and Sport

Proposition:

2. Upgrade and further develop play park for Ramoan

Developing inclusivity, increase access to recreational facilities by designing a playpark.

Supporting Statement:

This initiative supports NPF4 Policy 21 by encouraging active lifestyles and inclusive access to recreation facilities for all age groups.

Related North Lanarkshire LDP Policies: PP5, ENV3

NPF4 / 21 – Play, Recreation and Sport

Proposition:

3. Extend Glenboig Village Play Park

- Ensure Glenboig Village Park remains in Community ownership.

- Upgrade and increase variety of play equipment.

Supporting Statement:

This initiative supports NPF4 Policy 21 by encouraging active lifestyles and inclusive access to recreation facilities for all age groups.

Related North Lanarkshire LDP Policies: PP5, ENV3

NPF4 / 22 – Flood Risk and Water Management

Proposition:

1. Widen Ramoan Bridge

- Widen the bridge:

- Wider footpath required for safety of pedestrians.

- Reconfigure and maintain the drainage system to limit the flood risk

Supporting Statement:

This proposition supports NPF4 Policy 22 by addressing local water management and mitigating potential flood risks in key community areas.

Related North Lanarkshire LDP Policies: PP2A, WAT4

NPF4 / 22 – Flood Risk and Water Management

Proposition:

2. Improve drainage in Joe's Park

Reconfigure and maintain the drainage system to limit the flood risk.

Supporting Statement:

This proposition supports NPF4 Policy 22 by addressing local water management and mitigating potential flood risks in key community areas.

Related North Lanarkshire LDP Policies: PP2C, WAT4

NPF4 / 23 – Health and Safety

Proposition:

1. One way system around The Oval

- PLAN A – Traffic one direction around the oval.

- PLAN B – Signage to direct traffic to turn left when exiting South Medrox Street

Supporting Statement:

This measure enhances local safety and wellbeing, in alignment with NPF4 Policy 23's objective to create safer, healthier environments.

Related North Lanarkshire LDP Policies: DSP4

NPF4 / 23 – Health and Safety

Proposition:

2. Traffic calming on road to Mollinsburn

- Address current speed limit for the safety of pedestrians, cattle and road users.
- Install traffic calming measures where appropriate

Supporting Statement:

This measure enhances local safety and wellbeing, in alignment with NPF84 Policy 23's objective to create safer, healthier environments.

Related North Lanarkshire LDP Policies: DSP4

NPF4 / 23 – Health and Safety

Proposition:

3. Monitor and make safe subsidence due to underground workings

ACTION REQUIRED by NLC

- To closely monitor and make safe, sink holes and subsidence in the overall Inchneuk area.
- Install signage to highlight this high risk, dangerous area for the public.
- Install signage to include contact details for reporting possible deterioration of existing sink holes or new holes appearing.

Supporting Statement:

This measure enhances local safety and wellbeing, in alignment with NPF4 Policy 23's objective to create safer, healthier environments.

Related North Lanarkshire LDP Policies: DSP4

NPF4 / 23 – Health and Safety

Proposition:

4. Traffic calming for Marnoch Drive

ACTION REQUIRED by NLC

- Install appropriate traffic calming measures for the safety of children and overall community crossing the road to the village park.
- Address the current speed limit and congestion caused by the bus route and traffic coming and going from the local primary schools.
- Install a safe pedestrian crossing.

Supporting Statement:

This measure enhances local safety and wellbeing, in alignment with NPF4 Policy 23's objective to create safer, healthier environments.

Related North Lanarkshire LDP Policies: DSP4

NPF4 / 25 – Community Wealth Building

Proposition:

1. Woodland adjacent to Life Centre transferred to the Community. Ensure that this land is transferred to the community through the Community Asset process.

Supporting Statement:

This proposal aligns with NPF4 Policy 25 by enabling local stewardship of assets and fostering inclusive economic participation and community empowerment.

Related North Lanarkshire LDP Policies: PROM LOC4, PROT A

NPF4 / 25 – Community Wealth Building

Proposition:

2. Proposed site for Community Garden (Ramoan). GDT supports the development and transfer of this NLC owned site into community ownership, for the purpose of a community environmental project.

Supporting Statement:

This proposal aligns with NPF4 Policy 25 by enabling local stewardship of assets and fostering inclusive economic participation and community empowerment.

Related North Lanarkshire LDP Policies: PROM LOC1, ENV3

NPF4 / 25 – Community Wealth Building

Proposition:

3. Proposed site for Community garden (Glenboig). Extend the existing Glenboig Village Park to include a community garden project.

Supporting Statement:

This proposal aligns with NPF4 Policy 25 by enabling local stewardship of assets and fostering inclusive economic participation and community empowerment.

Related North Lanarkshire LDP Policies: PROM LOC1, ENV3

NPF4 / 28 – Retail

Proposition:

1. Site for supermarket and retail. Provides access to supermarket and local units.

Supporting Statement:

This action contributes to local economic resilience, supporting NPF4 Policy 28 by encouraging access to local retail and essential services.

Related North Lanarkshire LDP Policies: PROM LOC1

NPF4 / 28 – Retail

Proposition:

2. Potential site for Chemist and General Store. Provides access to supermarket and local units.

Supporting Statement:

This action contributes to local economic resilience, supporting NPF4 Policy 28 by encouraging access to local retail and essential services.

Related North Lanarkshire LDP Policies: PROM LOC2

NPF4 / 28 – Retail

Proposition:

3. Potential site for retail / health centre / petrol station. Provides access to supermarket and local units. Ensure local facilities are built including Health Centre, dentist, vet surgery and petrol station.

Supporting Statement:

This action contributes to local economic resilience, supporting NPF4 Policy 28 by encouraging access to local retail and essential services.

Related North Lanarkshire LDP Policies: PROM LOC2, EDQ2

NPF4 / 30 – Tourism

Proposition:

1. Glamping pods

Proposition:

2. Install pontoon bridge at Garnqueen Loch to create opportunities for enjoying this natural asset.

Encourage tourism.

- Enhance tourism infrastructure making Glenboig a more attractive destination for visitors.
- Inclusive growth and jobs supports local businesses and economic development through increased tourist activities.
- Encourages sustainable community through tourism practices, preserving natural and built environments.
- Tourist Information office / pod in Glenboig promoting local history

Supporting Statement:

These initiatives promotes local tourism opportunities in line with NPF4 Policy 30, supporting economic growth through sustainable visitor experiences.

Related North Lanarkshire LDP Policies: EDQ3



A VISION FOR SUSTAINABLE GROWTH



This Local Place Plan recognises the unique character, identity, and environmental assets of Glenboig.

Aligned with the National Planning Framework 4 (NPF4), it sets out clear principles to guide future development while protecting communities from overdevelopment. We support the implementation of The Six Principles of Place (Annex 3).

Preserve Village Identity and Distinctiveness

- Protect the separation between Gartcosh, Glenboig, and neighbouring settlements with robust green buffer zones.
- Protect Natural Heritage and Biodiversity
- Safeguard sensitive environmental assets and implement early ecological surveys and require developments to support biodiversity, including wildlife corridors and enhancements consistent with the North Lanarkshire Biodiversity Action Plan.



Deliver High-Quality, Sustainable Development

- With new developments insist on low-density, energy-efficient housing that reflects the character and landscape of each village.
- Require sustainable drainage systems (SuDS), renewable energy integration, and active travel infrastructure in all proposals.
- Infrastructure and Services First.
- New housing must not proceed until schools, health facilities, roads, and public transport networks are upgraded to meet demand.
- Address current transport constraints in Glenboig and ensure sufficient capacity before approving further growth.

Enhance Green and Blue Networks

- Strengthen links to the Glasgow and Clyde Valley Green Network by maintaining and extending woodland corridors, greenspaces, and path networks for walking and cycling.
- Prioritise community access to nature for health and wellbeing.
- Community Participation and Phased Growth
- Require all major developments to be subject to full community consultation and align with a strategic masterplan.
- Phase growth carefully to avoid overwhelming local services and infrastructure.
- Alignment with NPF4
- Policy 4 (Natural Spaces): Protecting biodiversity and natural assets.
- Policy 14 (Design Quality and Place) Enhance the character of places, strengthen communities, and forge a sense of belonging by integrating design principles into development.
- Policy 16 (Quality Homes): Sustainable and well-supported housing.

By adopting these principles Glenboig aims to deliver sustainable development that respects the village's heritage, protects natural resources, and supports a healthy, connected community.

Glenboig Ecology Summary

This summary highlights the key ecological assets and considerations for Glenboig, supporting efforts to protect biodiversity and guide sustainable development in line with community priorities and national planning frameworks. Glenboig is part of the 7 Lochs Wetland Park.

Key Ecological Features

Garnqueen Loch and Surrounding Habitats: A valuable wetland ecosystem supporting diverse aquatic and birdlife.

Local Nature Reserves and Woodlands: Areas of ecological importance providing habitats for native flora and fauna.

Sites of Importance for Nature Conservation (SINC): Recognised areas requiring safeguarding from development pressures.

Protected Species and Habitats

Birdlife: Rich variety of species including breeding swans and ducks.

Amphibians and Mammals: Populations of water voles and otters in wetland corridors.

Woodlands and Grasslands: Support bats, hedgehogs, and invertebrates, in particular dragonflies/ damsonflies and great crested newts.

Planning and Protection Considerations

Green Belt and Open Space Designation: Preserves the distinct rural character of Glenboig and prevents encroachment.

Floodplain and Drainage Protection: Essential for controlling water levels and supporting wetland health.

Connectivity: Maintaining green corridors to enable species movement between habitats.

Recommendations for Glenboig

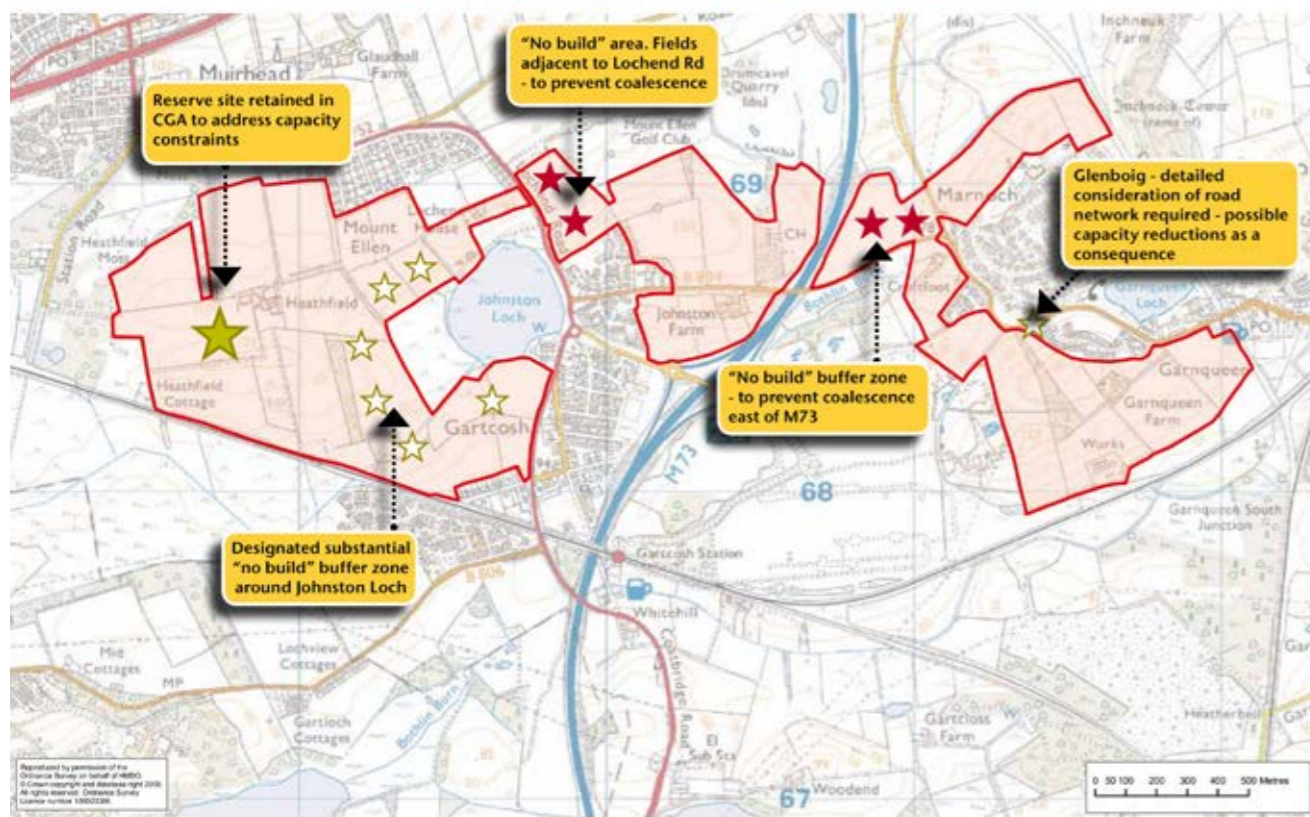
- Prioritise protection of Garnqueen Loch and associated wetlands.
- Resist development proposals that could compromise sensitive wildlife areas.
- Require robust ecological assessments for any new planning applications.
- Encourage community-led conservation initiatives to enhance biodiversity.

This ecology summary forms an evidence base for shaping a sustainable vision for Glenboig.

Local Place Plan Statement – Glenboig Growth and Local Centre Role

This Statement has been prepared to reflect Glenboig’s Local Centre designation within the North Lanarkshire Local Development Plan and the significant housing growth being delivered through the Gartcosh & Glenboig Community Growth Area. It incorporates National Planning Framework 4 (NPF4) policy which aligns with the community’s position.

Gartcosh:Glenboig Community Growth Area – Issues Map



Context

Glenboig is designated as a Local Centre in the North Lanarkshire Local Development Plan (adopted 2022). Its role is to provide local shops, services, housing, and community facilities. At the same time, Glenboig forms part of the Gartcosh & Glenboig Community Growth Area (CGA), delivering significant housing growth. The scale of this growth far exceeds the level normally associated with a Local Centre and creates pressure on services and infrastructure.

Under National Planning Framework 4 (NPF4, 2023), all planning decisions must be aligned

with national outcomes, including climate action, sustainable places, and local living. These requirements reinforce the community’s expectation that growth in Glenboig must be matched by appropriate infrastructure and service provision.

Community Aim: To ensure Glenboig develops as a sustainable, well-connected, and resilient settlement, where the scale of housing growth is supported by timely delivery of facilities and services, in line with NPF4 principles of 20-minute neighbourhoods, climate-resilient design, and local living.



Infrastructure First (NPF4 Policies 9 & 18)

Housing growth must be phased with new schools, health facilities, and community services. Development proposals should demonstrate how they contribute to creating a 20-minute neighbourhood.

Protect Local Centre Role (NPF4 Policies 27 & 28)

Glenboig should remain focused on local shops and services. Large-format retail and high-footfall uses should be directed to Town Centres, in line with the Sequential Approach and national town centre first policy.

Sustainable Transport (NPF4 Policies 13 & 14)

Development must prioritise walking, cycling, and public transport connections, including safe routes to the Local Centre and Gartcosh station. Proposals increasing car dependency will be resisted.

Green Network & Biodiversity (NPF4 Policies 3 & 5)

Lochs, wetlands, woodlands, and open spaces around Glenboig should be safeguarded and enhanced. All development should deliver positive effects for biodiversity.

Climate-Resilient Design (NPF4 Policies 2 & 3)

Housing and infrastructure should be designed to minimise emissions, integrate nature-based solutions, and address flood risk through high-quality SuDS.

Future Role of Glenboig

If population growth continues, evidence gathered through this LPP will support a case for reconsideration of Glenboig’s centre status in future LDP reviews, ensuring its role aligns with its scale and NPF4’s emphasis on local living.

Community Actions

1. Work with North Lanarkshire Council and partners to ensure service capacity (schools, healthcare, community hubs) is expanded in step with housing completions.
2. Advocate for investment in active travel and public transport, consistent with NPF4 policy requirements.
3. Monitor planning applications to ensure they demonstrate positive biodiversity outcomes and compliance with NPF4 policy tests.
4. Collect evidence of service pressures (e.g. GP access, school places) to inform future LDP reviews and any reclassification of Glenboig’s centre role.



Gartcosh – Glenboig Community Growth Area

Glenboig Housing Developments – 2025

Current status on Glenboig housing development

The table below sets out the current position for each of the Glenboig housing parcels, showing what is confirmed and what still requires verification from the Housing Land Audit (HLA) or planning portal.

Parcel / Site	Allocated Capacity (SDF)	Consented Units	Completions (to 31 Mar 2025)	Under Construction	Remaining Capacity	Confidence / Notes
Garnqueen Farm	~700 confirmed	535 (2020 PPP/ MSC) - not fully verified	~200 (needs HLA check)	Active build (Taylor Wimpey "Meadowside") confirmed	~385 (needs HLA)	Site is live with 2025 approvals and sales. Exact completions and remaining capacity need HLA / planning portal data.
Crofffoot Farm	~75 confirmed	0 (uncertain – historic applications exist)	0 (uncertain)	No visible 2025 build confirmed	~75 assumed	Allocation stands; no clear build evidence. Consent status needs planning portal check.
North Marnoch	~250 confirmed	0 uncertain	0 uncertain	No visible build confirmed	~250 assumed	Allocated in SDF; no active 2025 build. Consent and completions need HLA / planning portal verification
Main St (Police Station)	7 confirmed	7 confirmed	0 confirmed	0 confirmed	7 confirmed	Council programme lists a start in March 2026. Information understood to be fully up to date.

WORKING TOGETHER FOR A BETTER PLACE FOR EVERYONE!

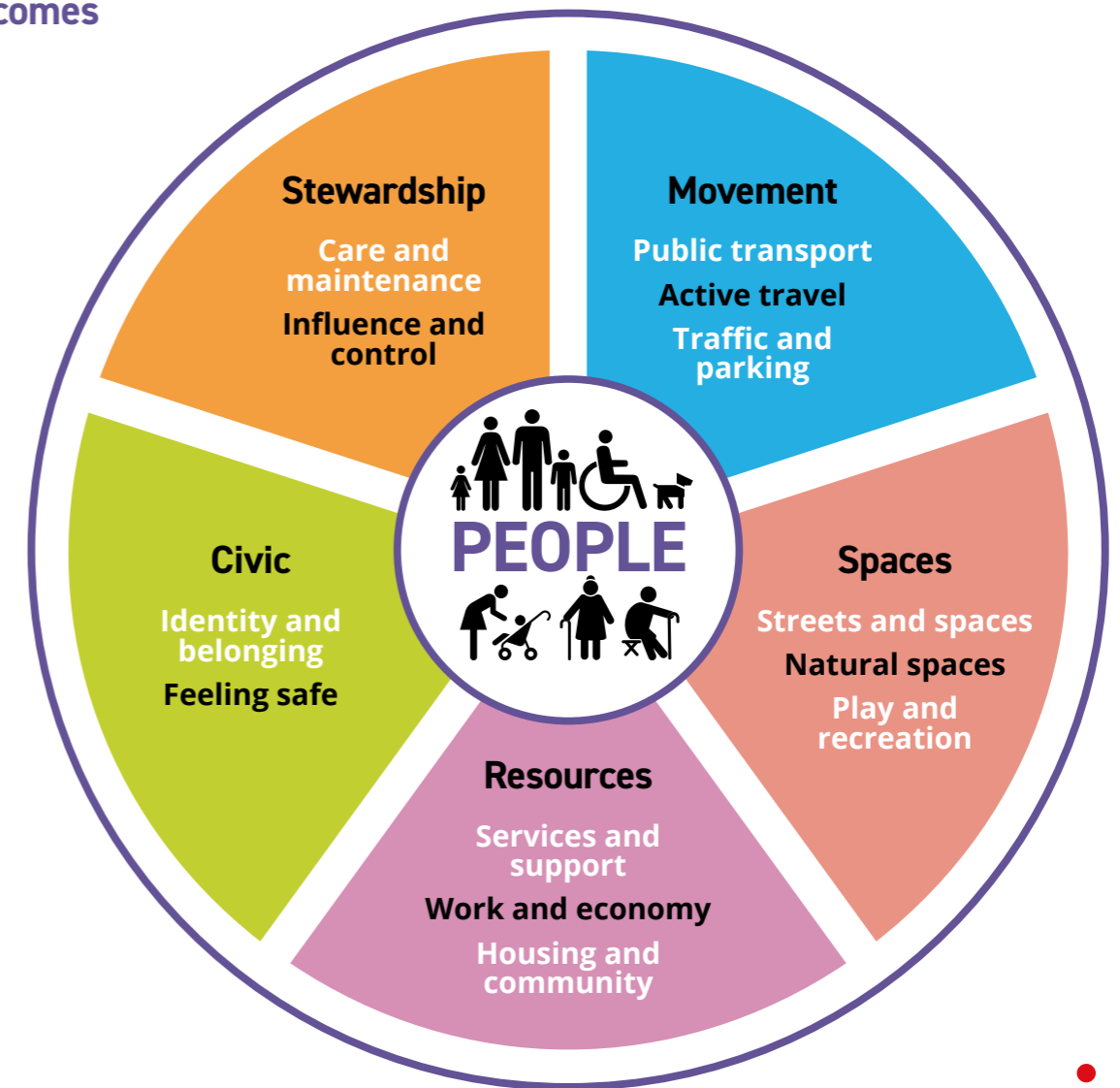
Setting out the Priorities for Community Action

The priorities for action that have been identified are set out under the Place and Wellbeing outcomes based on the Place Standard themes.

These themes are all the characteristics of a place that allow those who live, work and relax there to thrive.

The outcomes are for all stakeholders to take collaborative action on delivering in Glenboig.

Place and Wellbeing Outcomes



The principles of equality, net-zero emissions and sustainability underpin all of these themes, and all themes should be embedded in policy and action.

This theme highlights the priorities that emerged from community feedback and relate to aspects of your place that include moving around, public transport and traffic and parking.

PRIORITIES

IMPROVE BUS SERVICE/ ROUTES



IMPROVE TRAFFIC MANAGEMENT



IMPROVE INFRASTRUCTURE FOR WALKERS AND CYCLISTS



IMPROVE PARKING FACILITIES. USE LAND ACROSS FROM THE GLENBOIG LIFE CENTRE WHERE THERE IS SPACE FOR 60 CAR PARKING BAYS AND 6 RETAIL UNITS



POTENTIAL PARTNERS

ACTIONS AND POTENTIAL PARTNERS

Work with regional transport providers to increase frequency and coverage; consult residents for scheduling needs.

Conduct traffic flow studies and implement calming measures near schools and busy areas.
Install safe crossings where required on Main Street.

Develop safe walking and cycling paths; install bike racks.
Promote, develop and fund existing cycle hub.

Review parking space opportunities and lobby for better parking provision.
Requirement for safe car parking facilities with EV charging beside the BT exchange.

SPT, local bus companies, community councils, First Bus, NC LOIP Community Transport Group, Police Scotland, Sustrans, Schools, NLC, local planning and roads department, Housing developers.

This theme highlights the priorities that emerged from community feedback and relate to aspects of your place that include streets and spaces, natural space, play and recreation.

PRIORITIES

MORE COMMUNITY GROWING SPACE



MAKE THE MOST OF EXISTING GREEN SPACE



MORE OUTDOOR AND SPORTS FACILITIES



CREATE SAFER ROUTES/ CONNECT COMMUNITIES



BETTER SIGNAGE AND INTERPRETATION



POTENTIAL PARTNERS

ACTIONS AND POTENTIAL PARTNERS

Use LPP to lobby for community gardens; support volunteer gardening groups.

Upgrade amenities in parks; involve community in design.

Explore options and include further community engagement.

Improve lighting where possible and crossings on key paths; create green corridors.

- Install signage for natural and historical features with educational content.
- Prompt installation of new and accurate street signs within new housing developments.

Local authority youth services, Estates, Parks departments and planning departments, Allotment societies, Greenspace Scotland, SportScotland, Road safety initiatives, Local heritage groups, DTAS.

This theme highlights the priorities that emerged from community feedback and relate to aspects of your place that include facilities and services, work and local economy, housing and community and social interaction.

PRIORITIES

REGENERATION OF MAIN STREET - INCREASED VARIETY OF LOCAL SHOPS



ACTIONS AND POTENTIAL PARTNERS

Support small business development through sourcing grants or incentives.
Potential Partners: Business Gateway, local economic development team.

IMPROVE SERVICE PROVISION



Map gaps in services and expand offerings through partnerships.
Potential Partners: Third sector orgs. NHS, council service leads.

ACCESS TO HEALTH SERVICES



Work with NHS to extend mobile clinics or transport to GPs.
Potential Partners: NHS Boards, Health and Social Care Partnerships.

MORE ACTIVITIES FOR PEOPLE OF ALL AGES



Develop an intergenerational activity programme and support youth clubs.

MORE TRAINING OPPORTUNITIES LEADING TO WORK



Partner with colleges to deliver training locally; promote apprenticeships.
Potential Partners: New Film Campus, Local colleges, Skills Development Scotland.

CALLS FOR HOUSING TO REFLECT LOCAL NEEDS



Use the LPP to promote community need. Ensure mix in future developments.

COMMUNITY WEALTH BUILDING



Make the most of any opportunities for community wealth building in Glenboig eg Community Benefits from Renewable Energy Schemes or land development schemes.

SUSTAINABLE HOUSING



Work to ensure that all renewable initiatives deliver financial + environmental benefits to home occupiers e.g. create efficient process for solar panel link up to the main power grid.

POTENTIAL PARTNERS

Community centres, third sector organisations, NLC housing, Housing Associations, Energy4All.

This theme highlights the priorities that emerged from community feedback and relate to aspects of your place that include identity and belonging and feeling safe.

PRIORITIES

MAKE OUR COMMUNITY SAFER



ACTIONS AND POTENTIAL PARTNERS

Lobby for community wardens, promote Neighbourhood Watch schemes.

PROMOTE LOCAL HERITAGE



Create heritage trails or events celebrating local history.

ENCOURAGE TOURISM



Develop LPP propositions, marketing materials and online presence for local attractions.

MORE SOCIAL SPACES



Identify any facilities that could be upgraded or repurpose underused buildings for social use.

CELEBRATE, SUPPORT AND ENCOURAGE VOLUNTEERING



Host volunteer fairs, provide recognition programmes.

POTENTIAL PARTNERS


Police Scotland, community safety partnerships, Local history groups, Visit Scotland, local tourism groups. DTAS, Regeneration teams, Voluntary Action North Lanarkshire, local charities.


This theme highlights the priorities that relate to aspects of your place that include care and maintenance as well as influence and sense of control.

PRIORITIES

CLEANER STREETS 

KEEP DRAINS CLEAR ALL YEAR ROUND

PROMOTE WHAT IS GOING ON LOCALLY 

PRESERVE AND ENHANCE OUR NATURAL ENVIRONMENT 

IMPROVE BIN PROVISION 

POTENTIAL PARTNERS

ACTIONS AND POTENTIAL PARTNERS

Support the running of regular community clean-up days.

Introduce seasonal inspections and community reporting tools.

Make the most of community noticeboards and newsletters. Make best use of social media.

Develop biodiversity plans and support tree planting.

Map existing waste bin provision and identify locations where there is lack of provision. Work with NLC to schedule increase in bin installation and regular waste uplift.

NLC Environmental and waste services, council infrastructure teams, schools, NatureScot, environmental NGOs, local groups, local media, Scottish Water.

MAKING THE LINKS TO THE NORTH LANARKSHIRE COMMUNITY PARTNERSHIP PLAN

Our Glenboig Local Place Plan and its community action priorities comes from a bottom up approach.

It sits together with the My Northern Corridor Local Improvement Plan to encourage a joined up approach to community development and improved service provision. This plan represents the views and aspirations of local people and can be used to help encourage partnership working. It promotes opportunities for local groups, public agencies and service providers to work together to improve the quality of life for the people of Glenboig.

North Lanarkshire LOIP priorities	Community Action Priorities linked to Place and Wellbeing Outcomes
<p>HEALTH INEQUALITIES</p> <p>Local people need access to a range of health and wellbeing services as well as information and activities to support positive lifestyle choices that can impact on their life circumstances and quality of life.</p>	<p>RESOURCES</p> <p>Improve local access to local health services, create more community based health initiatives, support healthy eating and active living through local growing spaces and recreational activities.</p>
<p>CHILDREN AND YOUNG PEOPLE</p> <p>We want children and young people in the Northern Corridor to have their voices heard and feel part of their community.</p>	<p>STEWARDSHIP AND RESOURCES</p> <p>Develop youth engagement programmes, improve play and recreation spaces, expand opportunities for learning and training to support positive futures.</p>
<p>SOCIAL INTEGRATION AND INCLUSION</p> <p>We want the Communities of the Northern Corridor to be places where people feel welcome and included and where people have the information, skills and support required to help them to take advantage of social, recreation and developmental activities to enhance their quality of life regardless of age, background and circumstances.</p>	<p>CIVIC</p> <p>Celebration of cultural heritage, promotion of community events and volunteering and an increased provision of social spaces for intergenerational connection.</p>
<p>COMMUNITY TRANSPORT</p> <p>Local people require a range of accessible, sustainable, and affordable transport options to assist them to take advantage of services and opportunities to enhance their quality of life.</p>	<p>MOVEMENT</p> <p>Improve bus services, enhance walking and cycling infrastructure and develop transport solutions for older residents and those with limited mobility.</p>
<p>BUILDING LOCAL RELATIONSHIPS, TRUST AND COMMUNICATION</p> <p>This priority would lay the foundations for the development of agreed and shared actions and improvements.</p>	<p>CIVIC AND STEWARDSHIP</p> <p>Promote local groups and activities, strengthen community capacity through training and volunteering and enhance communication between residents and service providers.</p>

We seek to work in partnership to make real progress and invite residents, local groups and businesses, local authority departments and outside agencies to work together with us. If you can help with any of these issues and help improve our community please get in touch with Glenboig Development Trust.



Monitoring, Review and Re-setting

The success of this Local Place Plan and Community Action Priorities depends on people in our community getting together to identify and address both the opportunities and threats the community faces.

For its part the Glenboig Development Trust commits itself to constantly monitoring the Plan's progress and reporting on it back to the community.

Acknowledgments and thanks!

We would like to recognise the support that has been given from the following agencies and organisations who have played their part in one way or another in helping create the Glenboig Local Place Plan:

Glenboig Development Trust www.glenboigdevelopmenttrust.org.uk/

Coalfields Regeneration Trust www.coalfields-regen.org.uk/

North Lanarkshire Council www.northlanarkshire.gov.uk/

Improvement Services www.improvementservice.org.uk/

Place and Wellbeing Alliance www.ourplace.scot/

Scottish Government www.gov.scot/publications/national-planning-framework-4/

Green Map System www.greenmap.org/

A big thank you to everyone in our local communities who helped make this Glenboig Local Place Plan possible.

Making it Happen

To find out more information about this plan or to volunteer with any projects please contact by email to Glenboig Development Trust.

Phone: **01236 874520**

Email: info@glenboigdt.org

Address: Glenboig Life Centre, Main Street,
Glenboig, ML5 2R

Compliance Statement

This Local Place Plan has been prepared by Glenboig Development Trust, a community-controlled body, in accordance with the statutory requirements for Local Place Plans in Scotland and with reference to Scottish Government Circular 1/2022: Local Place Plans.

Glenboig Development Trust

Glenboig Life Centre Services & Activities

This list is subject to change – contact GDT | TEL: 01236 874 520

- Community Post Office and Shop
- GDT Membership Available - FREE
- Lochview Community Café
- Meal Delivery Service
- Meal Orders for seniors and vulnerable people – Daily Calls
- Wellbeing Calls
- Befriending Call
- Carer Breather / Befriender/ Sitting Service
- Toddlers and Sensory Play
- Girls Group
- Boys Group
- Youth View Drop in Group
- Jelly Beans
- Jolly Jumpers – ASN Group
- Horizon – ASN group
- Tovertafel – Interactive games projector
- Glenboig Historical displays
- The Village Autumn Group
- Art Class
- Indoors Bowls
- Arts & Crafts including sewing and knitting
- Cycle Hub
- Tower Circuit Training – inc FREE Gym Inductions
- Circuit Class
- Fibro Fitness Class
- Chair Yoga Class
- Hall Hire
- Community Transport
- Community Garden
- Community Garden & Handyman Team
- Community Shed
- Feet4U Podiatry
- Wee Wonders – Baby Sensory
- Sparkles Dance Academy
- Tokyo Adachi Roshukai UK (TAR)



NPF4 / 18 – Infrastructure First

Install new roundabout where Marnoch Drive meets Main St Glenboig, to relieve congestion at busy times, focus on safety and improve the transport infrastructure.

Supporting Statement:

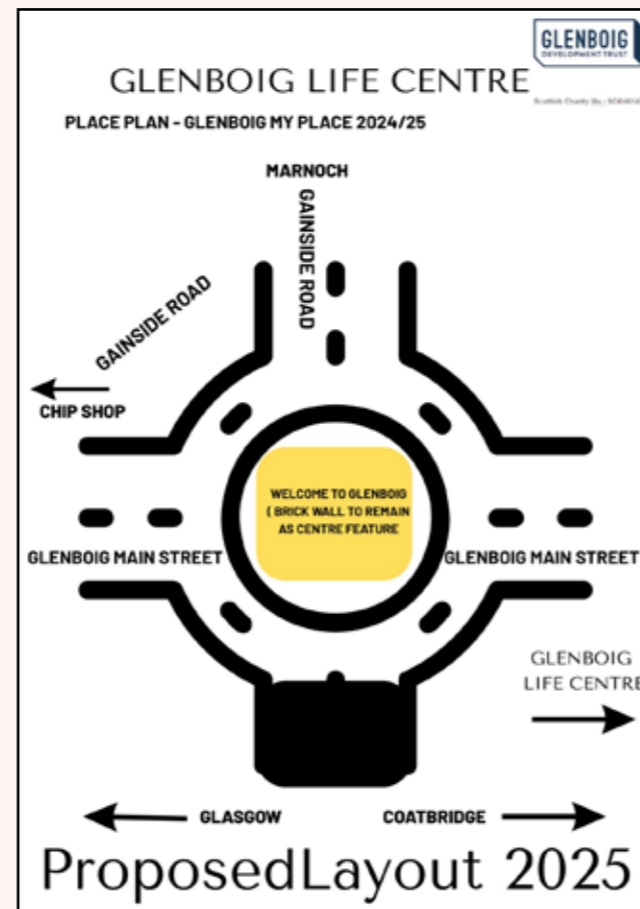
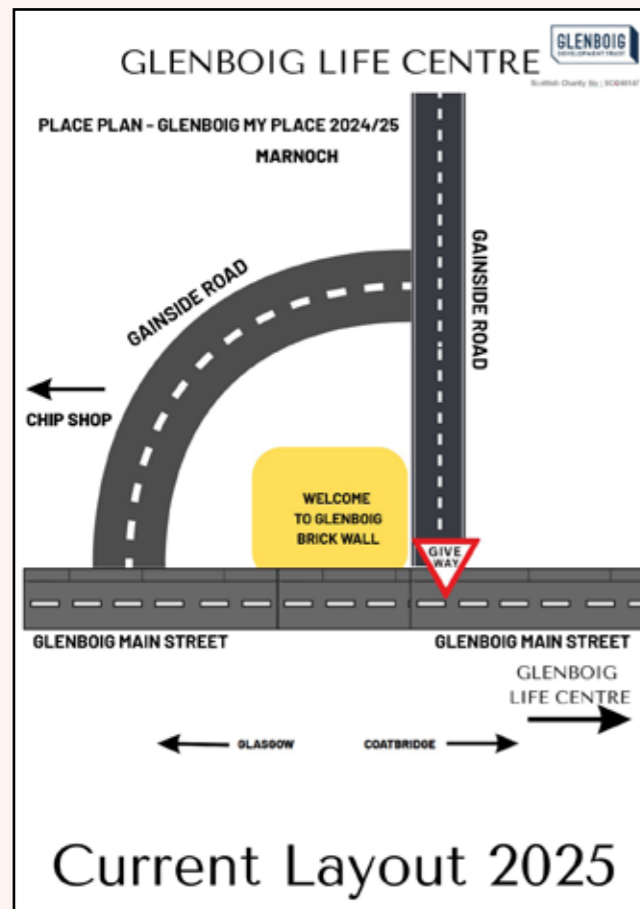
This action reflects the principles of NPF4 Policy 18 by prioritising essential infrastructure to support safer routes.

Related North Lanarkshire LDP Policies: DSP3, EDQ2

This came from the consultation with local people seeking a solution to the congestion from Marnoch to Main Street.

Replace existing road layout with a roundabout.

Landscape the roundabout area, site the Glenboig welcome sign in the centre and include the use of existing local bricks.



The Six Principles of Place

The Six Principles of Place help guide place-based working and decision-making. They promote collaboration and holistic planning to improve the lives of people and communities.

These principles are widely supported across Scotland and embedded in national policy.

1. Place is shaped by the people who live and work there

Communities should be at the heart of decision-making, shaping services and spaces around what matters to them.

2. Place is a way to join up services, land, and investment

Working across boundaries and organisations helps ensure that decisions and investments in a place are coordinated and efficient.

3. Place reflects the distinct identity and character of a community

Each place has its own unique strengths, culture, and needs, which should be recognised and celebrated.

4. Place supports sustainable, inclusive economic growth

Good places attract investment, support local business, and create opportunities for everyone.

5. Place is where environmental, social, and economic priorities come together

Thinking holistically helps ensure that actions in one area support positive outcomes in others.

6. Place requires leadership and collaboration

Strong local leadership and collaborative working across sectors are essential to delivering lasting change.



Six Qualities of Successful Places

1. Healthy: Supporting the prioritisation of women’s safety and improving physical and mental health.

Designing for:

- lifelong wellbeing through ensuring spaces, routes and buildings feel safe and welcoming e.g. through passive surveillance and use of physical safety measures.
- healthy and active lifestyles, through the creation of walkable neighbourhoods, food growing opportunities and access to nature and greenspace.
- accessibility and inclusion for everyone regardless of gender, sexual orientation, age, ability and culture.
- social connectivity and creating a sense of belonging and identity within the community.
- environmentally positive places with improved air quality, reactivating derelict and brownfield land, removing known hazards and good use of green and blue infrastructure.

2. Pleasant: Supporting attractive natural and built spaces.

Designing for:

- positive social interactions including quality of public realm, civic spaces, streets and ensuring a lively and inclusive experience.
- protection from the elements to create attractive and welcoming surroundings, including provision for shade and shelter, mitigating against noise, air, light pollution and undesirable features, as well as ensuring climate resilience, including flood prevention and mitigation against rising sea levels.
- connecting with nature including natural landscape, existing landforms and features, biodiversity and eco-systems, integrating blue and green infrastructure and visual connection.
- variety and quality of play and recreation spaces for people of all ages and abilities.
- enjoyment, enabling people to feel at ease, spend more time outdoors and take inspiration from their surroundings.

3. Connected: Supporting well connected networks that make moving around easy and reduce car dependency.

Designing for:

- active travel by encouraging more walking, wheeling and cycling together with reliable, accessible, public transport and shared transport hubs that allow for simple modal shifts.
- connectivity including strategic cycle routes, local cycle routes, footpaths, pavements, active travel networks, desire lines, destinations, permeability, accessibility and catering for different needs and abilities.
- convenient connections including local and regional interconnection, infrastructure, sustainable travel, interchange between public transport and active travel and supporting easy modal shifts in transport.
- pedestrian experience including safe crossing, pedestrian priority, reduced vehicular speed and noise, inclusive design and surfaces, assistive technology, reduced street clutter, catering for suitable vehicular parking and management of loading/unloading and deliveries and refuse collections.

4. Distinctive: Supporting attention to detail of local architectural styles and natural landscapes to be interpreted into designs to reinforce identity.

Designing for:

- scale including density, building heights, massing, orientation, building lines and legibility.
- built form including mix of typologies, types, uses, sizes and tenures.
- sense of place including design influences, architectural styles, choice of materials and finishes, detailing, landscape design, active frontages and cultural context.

5. Sustainable: Supporting the efficient use of resources that will allow people to live, play, work and stay in their area, ensuring climate resilience and integrating nature positive biodiversity solutions.

Designing for:

- transition to net-zero including energy/ carbon efficient solutions, retrofitting, reuse and repurposing and sharing of existing infrastructure and resources.
 - climate resilience and nature recovery including incorporating blue and green infrastructure, integrating nature positive biodiversity solutions.
 - active local economy including opportunities for local jobs and training, work spaces, enabling working from home, supporting community enterprise and third sector.
 - community and local living including access to local services and facilities, education, community growing and healthy food options, play and recreation and digital connectivity.
- 6. Adaptable:** Supporting commitment to investing in the long-term value of buildings, streets and spaces by allowing for flexibility so that they can meet the changing needs and accommodate different uses over time.

Designing for:

- quality and function, ensuring fitness for purpose, design for high quality and durability.
- longevity and resilience including recognising the role of user centred design to cater for changing needs over time and to respond to social, economic and environmental priorities.
- long-term maintenance including effective engagement, clarity of rights and responsibilities, community ownership/stewardship, continuous upkeep and improvements.

Place Standard Tool and the delivery of successful places.

The Place Standard contains 14 themes that support the Six Qualities of Successful Places, providing a consistent framework to consider and to assess the quality of new and existing places. The Place Standard tool Design Version is specifically created to support the consideration of development planning and design within the framework of the 14 Place Standard themes and to deliver on the Six Qualities of Successful Places.



LPP Propositions: Alignment with LOIP Priorities and The Plan

LOIP alignment summarises which Community Board priorities are supported and how residents benefit.

LOIP Headings

Community Transport

Making everyday journeys easier and safer—by foot, wheel, bike or bus—so people can reach work, school, health care and shops.

Children & Young People

Giving children and teenagers safe places to learn, play and take part in positive activities close to home.

Social Integration & Inclusion

Creating welcoming spaces and activities that bring neighbours together and reduce loneliness.

Health Inequalities

Improving health for everyone—especially those who face extra barriers—by making active lifestyles and local services easier to access.

Building Local Relationships, Trust & Communication

Clear information, simple ways to report issues, and stronger links between residents and services.



Table 1

Outlines amendments and showing links between the Glenboig LPP propositions – NLC LDP – LOIP – The Plan.

NPF4 Policy	Propositions – suggested amendments to the LDP	LDP	LOIP	The Plan for North Lanarkshire
NPF4/9 – Vacant & Derelict Land	Community Garden at former Glenboig Primary (Ramoan)	PROM LOC1, EDQ2	Transforms a disused site into a safe, shared space for growing, learning and play. Brings people together across ages, reduces isolation and supports activities for children and families.	Strengthens community participation and stewardship, improves local green space quality, and supports healthier lives through outdoor activity and volunteering.
NPF4/13 – Sustainable Transport	New pavement on Johnston Road (Croft Rise - motorway bridge)	PROM ID3, EDQ2	Makes walking safer and more accessible for buggies and wheelchairs, reducing severance between homes and key routes.	Improves public safety, supports active lifestyles, and makes streets work better for pedestrians.
NPF4/13 – Sustainable Transport	Footpath from South Medrox Farm along Coatbridge Road	PROM ID3, EDQ2	Adds a missing link for walking to services and bus stops, cutting reliance on short car trips.	Backs safer routes to everyday destinations and supports health through more walking.
NPF4/13 – Sustainable Transport	Public transport provision for Annathill	PROM ID3	Reduces isolation by connecting residents to work, education, health and shops—particularly important for young people and older residents.	Improves equal access to services and jobs by providing viable bus links.
NPF4/13 – Sustainable Transport	Public transport provision for Greenfoot	PROM ID3	Improves bus access so residents can reach services, parks and neighbouring communities without a car.	Supports inclusive access and reduces transport-related inequality.
NPF4/14 – Design, Quality & Place	New Primary School in Glenboig	EDQ2, RTC3	Provides local school places for a growing population and a community hub for learning and activities.	Improves outcomes for children and young people, and strengthens community life around a high-quality public building.

NPF4 Policy	Propositions – suggested amendments to the LDP	LDP	LOIP	The Plan for North Lanarkshire
NPF4/18 – Infrastructure First	Roundabout at Marnoch Dr/Main St (replace T-junction)	DSP3, EDQ2	Improves road safety and traffic flow at a busy village junction—safer for people walking, cycling and driving, including school runs.	Targets essential infrastructure to address congestion and safety, supporting reliable everyday travel.
NPF4/21 – Play, Recreation & Sport	Inchneuk – floodlights, changing rooms, multi-use pitches	PP5, RTC3	Creates safe, all-year facilities for clubs and casual use, giving young people positive things to do and bringing the community together.	Enables more people to be active and supports local clubs, events and volunteering.
NPF4/21 – Play, Recreation & Sport	Upgrade and further develop play park for Ramoan	PP5, ENV3	Delivers inclusive play close to home, with equipment for different ages and abilities.	Improves everyday wellbeing for families and makes local spaces more attractive.
NPF4/21 – Play, Recreation & Sport	Extend Glenboig Village Play Park; keep in community ownership	PP5, ENV3	Expands a much-used park and keeps it owned and shaped by the community.	Builds community capacity and protects valued green space while improving play opportunities.
NPF4/22 – Flood Risk & Water Management	Widen Ramoan Bridge; safer footpath; improve drainage	PP2A, WAT4	Reduces flood risk and gives pedestrians a safer, wider route across the bridge, protecting access during bad weather.	Protects people and infrastructure and supports reliable, safe everyday travel.
NPF4/22 – Flood Risk & Water Management	Improve drainage in Joe's Park	PP2C, WAT4	Keeps the park usable year-round, preventing waterlogging and making play and sport more reliable.	Improves the quality and resilience of local green space.
NPF4/23 – Health & Safety	One-way system around The Oval (or left-turn only on exit)	DSP4	Cuts conflict points and slows traffic, making streets safer for residents and school children.	Enhances public safety and supports calmer, more walkable neighbourhood streets.
NPF4/23 – Health & Safety	Traffic calming on road to Mollinsburn; review speed limit	DSP4	Tackles high speeds on a rural route used by pedestrians and farm traffic, reducing collision risk.	Improves safety on strategic local roads and supports active travel where possible.

NPF4 Policy	Propositions – suggested amendments to the LDP	LDP	LOIP	The Plan for North Lanarkshire
NPF4/23 – Health & Safety	Monitor/make safe subsidence at Inchneuk; signage & reporting	DSP4	Actively manages risks from subsidence with monitoring, clear warnings and a simple way to report problems.	Protects public safety and uses local reporting and data to manage hazards.
NPF4/23 – Health & Safety	Traffic calming for Marnoch Drive; safe pedestrian crossing	DSP4	Makes it safer for children and families to reach the village park and schools by slowing traffic and providing a safe crossing point.	Delivers safer routes to everyday destinations and encourages walking.
NPF4/25 – Community Wealth Building	Woodland next to Life Centre transferred to the community	PROM LOC4, PROT A	Gives residents a say in how nearby woods are used and improved for paths, nature and learning.	Empowers the community to manage local assets and enhance the natural environment.
NPF4/25 – Community Wealth Building	Ramoan site for Community Garden - community ownership	PROM LOC1, ENV3	Creates a community-run growing space for food, skills and social activity, accessible to all ages.	Builds local capacity, improves health through outdoor activity and supports climate-friendly food growing.
NPF4/25 – Community Wealth Building	Extend Glenboig Village Park to include community garden	PROM LOC1, ENV3	Adds a community-led garden within a well-used park, creating volunteering and learning opportunities.	Strengthens volunteering and participation while enhancing a key community asset.
NPF4/28 – Retail	Site for supermarket and local retail units	PROM LOC1	Brings everyday shopping closer to home, saving time and travel costs and helping those without a car.	Supports local jobs and services and reduces the need for longer car journeys.
NPF4/28 – Retail	Potential site for Chemist and General Store	PROM LOC2	Improves access to prescriptions and health advice locally, tackling barriers for people with limited mobility or transport.	Strengthens local service provision and supports health and wellbeing.
NPF4/28 – Retail	Potential site for retail/health centre / petrol station	PROM LOC2, EDQ2	Co-locates key services so residents can meet daily needs within the village and travel less.	Designs services around people and supports a more self-sufficient, connected community.
NPF4/30 – Tourism	Glamping pods; pontoon at Garnqueen Loch; visitor / info pod	EDQ3	Creates low-impact visitor experiences that celebrate local nature and history while improving access to the loch.	Grows the local economy in a sustainable way and encourages active, outdoor recreation.

OUR COMMUNITY VISION

Our shared vision is to ensure Glenboig and Villages continue to be a vibrant, thriving place to live — for current and future generations.



Design: Arken Creative
LPP Map: Colour & Light Ltd.
Print: Armstrong Printing (Alloa) Ltd.
Photography: Mark Farrell (Back Cover and Nature / Wildlife)
Mark McGillivray (Drone image Front Cover)
Yvonne Ioannou
Enid Trevett



**Coalfields
Regeneration
Trust**

BUILDING PROSPERITY & OPPORTUNITY



Scottish Charity No: SC046147

The Coalfields Regeneration Trust
Registered Charity No.1074930 in England and Wales
A Charity Registered in Scotland No SC039277



For a PDF version of this
Local Place Plan and for
further information visit
www.crtconnect.org.uk